

FREE GUIDE



SOMERSET ART WEEKS
prospect
FESTIVAL 2017
23 SEPTEMBER - 8 OCTOBER

SATW
somerset
art works



Photo: Glenn Dearing

Somerset Art Weeks is a much-loved and thriving event and I'm proud to support it.

It plays an invaluable role in identifying and celebrating a huge variety of creative activities and projects in this county, finding emerging artists and raising awareness of them.

I urge you to go out and enjoy these glorious weeks of cultural exploration.

Kevin McCloud

"What a fantastic creative county we all live in!" *Michael Eavis*

Placing art at the heart of Somerset, investing in the arts community, enriching lives



SAW is an artist-led organisation and Somerset's only countywide agency dedicated to developing visual arts, weaving together communities and supporting the artists who enrich our lives. We want Somerset to be a place where people expect to engage with excellent visual art that is surprising and distinctive.

SAW creates Projects and offers Membership to support practicing artists and organisations in Somerset: providing bursaries, developing commissions, supporting collaborative working, providing networking and showcase opportunities, including our diverse annual Art Weeks event.

SOMERSET ART WEEKS
23 SEPTEMBER - 8 OCTOBER 2017

prospect

WELCOME TO OUR FESTIVAL!



Photo: Paul Newman

Somerset Art Weeks Festival is back again. This year we have 120 venues and a really exciting list of participating artists.

The theme for this year's festival is *Prospect*, giving rise to notions of space and potential. *Prospect* to me conjures up my art history past with 18th Century landscape painting and Somerset's big views. More recently it reminds me of my arts residency in Russia and the *Nevsky Prospekt*, the great broad street of St Petersburg. I am pleased to showcase the work of some of the artists I met during this residency at The Gallery in Castle Cary.

I will also be one of the 12 artists in residence at the brilliant Bruton Art Factory in their hotly anticipated concept *The Soup Kitchen of Love*, and we are thrilled that they are hosting the Official Somerset Art Weeks Festival Club, where the cult favourite *Colony Room Club Somerset* will return with refreshments served and daily changing events (see page 72 for further details).

This year's festival is hotting up to be one of the best so far, and gives a platform to showcase the incredible talent that resides in this magnificently creative county. We look forward to opening the hundreds of doors once more for Somerset's largest visual arts festival.

Richard Pomeroy

Chair, Somerset Art Works

SAW
somerset
art works

Somerset Art Works (SAW Ltd)

The Town Hall, Bow Street, Langport, Somerset TA10 9PR

T: 01458 253800 • E: info@somersetartworks.org.uk • W: www.somersetartworks.org.uk





SOMERSET ART WEEKS FESTIVAL 2017

prospect

23 SEPTEMBER - 8 OCTOBER

SOMERSET ART WEEKS is the unique celebration of visual arts in Somerset.

Alternating between Open Studios and Festival years, Somerset Art Weeks is now firmly established as one of the biggest showcases celebrating the visual arts in the South West. With over 350 artists in 120 venues for 16 days of this autumn's Festival, many venues have embraced the theme 'Prospect' in their shows and events.

Somerset Art Works continues to support the arts in Somerset and facilitate exciting, challenging and inspiring artwork with a curated programme of commissions and partner projects all of which place Art in the heart of the community.

Among this year's **FESTIVAL HIGHLIGHTS**:

A LANDSCAPE OF OBJECTS featuring specially commissioned artworks and installations located in some of the South West's most beautiful gardens such as Kilver Court, Hestercombe Gardens and Forde Abbey. It includes Lytes Cary which will also

host a special contemporary craft showcase weekend (23 and 24 September).

Somerset Art Works and Somerset Film present a programme of films, **ALL THE PEOPLE**, curated by Josephine Lanyon, featuring films by artists Ben Rivers, Luke Fowler, Sarah Miles and Adam Chodzko (28 September - 1 October).

A **FAMILY FRIENDLY WEEKEND** finale (7 and 8 October) with plenty of workshops and 'have a go' activities for children (and parents!) to enjoy in venues extending a special welcome to families.

CREATIVE PATHWAYS bursary exhibitions. These bursaries are an important part of SAW's work which encourages emerging artists to develop their practice by providing a range of support such as mentoring, studio space, materials and advice. There will be four Creative Pathways exhibitions, located at Dove Studios, Black Swan Arts, The Eastville Project and The Old Brick Workshop. There will also be a Creative Pathways retrospective at Taunton Brewhouse.



Some of the other SAW-SUPPORTED PROJECTS AND PARTNERSHIPS include:

GATHER-ING - located at Somerset Rural Life Museum, a contemporary craft exhibition responding to the function of the Tithe Barn.

MUSE (Makers in Museums) - eight venues across Somerset and Devon featuring responses by contemporary artists to fascinating historic collections.

PROSPECTUS - a pilot project led by artist Anna Best for a new form of art school in the dispersed art community of Somerset.

NEW WAVE - a reunion of alumni from West Somerset Community College, curated by Toni Davey, located at Contains Art in Watchet, responding to Hokusai's *Great Wave*.

EPHEMERAL AND ETERNAL - an installation of new work by Fiona Campbell and Angela Morley, looking at nature's capacity for renewal, in the Round Tower at Black Swan Arts in Frome.

WATER-MEADOW-WOOD - a presentation of artwork created by participants working with resident artist Elizabeth Jardine, through an exploration of the natural, cultural and historical heritage of Yeovil Country Park. Part of SAW's Community and Education programme.

EN PLEIN AIR - open-air painting by visiting Russian artists will form an exhibition at The Gallery in Castle Cary. The Russians will also be working alongside Somerset Artists during the summer.

Artist-led venues feature in all five regions of Somerset: Mendip, Sedgemoor, West Somerset, Taunton Deane and South Somerset. A rich variety of mediums, materials and methods will be on show in 120 venues, with a wide range of skills on display.

Some of the more unusual venues to look out for include scrapyards, bookshops, tithe barns, pubs, a paper making mill and all of Wells High Street! Established destinations take part along with newer venues including the Red Brick Building in Glastonbury, CICCIC in Taunton, Lanacre Gallery on Exmoor, Heritage Courtyard Studios and Andelli Art in Wells, Clayhill Arts near Bridgwater, Bruton Art Factory and a special pop up exhibition by Cavaliero Finn at Monks Yard in Ilminster.

Festival years continue to delight audiences by enabling artists to participate in themed exhibitions and group shows alongside specially commissioned SAW projects. Visitors can expect to be inspired and surprised by experiencing art in a variety of unusual and special locations with the opportunity to take part in workshops, activities and talks. The vast majority of the festival is free to attend.

ENJOY!

HOW TO USE THIS GUIDE

THE VENUES

The venues are divided into 5 areas:

MENDIP: VENUES 1 - 41

SEDGEMOOR: VENUES 42 - 57

WEST SOMERSET: VENUES 58 - 67

TAUNTON DEANE: VENUES 68 - 84

SOUTH SOMERSET: VENUES 85 - 120

OPENING DAYS AND TIMES

Venues will be open daily from 11am to 6pm unless otherwise stated.

Venues will also show a calendar with closing dates crossed out in red:

S	S	M	T	W	T	F	S	S	M	T	W	T	F	S	S
23	24	25	26	27	28	29	30	1	2	3	4	5	6	7	8

ADDITIONAL INFORMATION



DISABLED ACCESS: Information on physical access. Some venues may have gravel paths and steps. If you are not sure, please check before your visit.



PARKING: Onsite or offsite parking information



ACTIVITIES: Workshops, demonstrations, tastings or have-a-go activities. Practical workshops are provided by some venues. Please contact individual venues for further and booking details.



FAMILY FRIENDLY: Venues showing this logo are expecting visits from families and groups.



NO DOGS: No dogs, except guide dogs.



VENUE SIGNS

Look out for the Somerset Art Weeks signs! They will guide you to the venues.

DISCLAIMER

All information in this guide is correct at the time of printing. Each venue is responsible for the information it has provided for this Guide. Somerset Art Works cannot accept responsibility for unforeseen circumstances that may occur during your visit. Visitors are advised to contact venues about access and opening times before visiting.

FAMILY FRIENDLY POLICY

During Somerset Art Weeks 2017 most of the venues will be happy to welcome families. Venues showing this logo are expecting visits from families and groups, and will be doing their best to provide clear information and facilities for your family. However, some of the venues are open for public access on a temporary basis during the Art Weeks only, such as artist studios and private premises, so they will have limited facilities, and great care should be taken when visiting them.

Adults are responsible for the supervision of any children in their care at all times. SAW and participants cannot accept liability for any loss, damage or injury sustained by any member of the public during their visits.

cf

CAVALIERO
FINN
PRESENTS



THE ESSENCE
OF HOME

CURATED AS
PART OF THE
SOMERSET
ART WEEKS
FESTIVAL

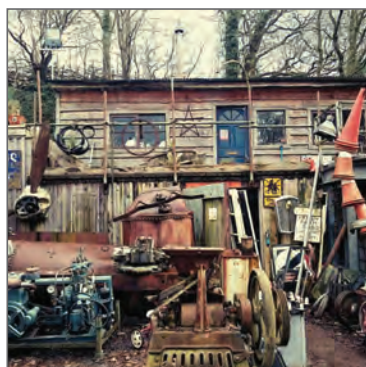


VENUE 88

HORTON MANOR,
HORTON CROSS
ILMINSTER
TA19 9PY

WWW.CAVALIEROFINN.COM

FEATURING WORK BY: TONY BEAVER, ROWENA BROWN, MIA CAVALIERO, ANGELA CHARLES, SOPHIE COOK, SAM EDKINS, BJORK HARALDSDOTTIR, GALVIN BROTHERS, AKIKO HIRAI, IKUKO IWAMOTO, SANDRA JAMES, CATHERINE KNIGHT, REBECCA MCLYNN, SIMON LEDSON, DJ LOWRIE, RHIAN MALIN, ALICE MARA, ALI MILLER, MINEHEART, DANIEL REYNOLDS, LUCY DU SAUTOY, YUTA SEGAWA, PATRICIA VOLK, PIA WUSTENBERG & MIZUYO YAMASHITA



1 ROCKAWAY PARK

SCULPTURE, PAINTING, PRINTS, DRAWING, INSTALLATION, SITE SPECIFIC

Set in a disused quarry on the top of Cloud Hill, Rockaway defies description. We house artists and works of art and supply materials and inspiration to many more. There will be work on show from resident artist Rowdy, Joe Rush, Filthy Luker, Matthew James, Shangrila, Mutartis Boswell, and on-site blacksmiths and woodworkers, alongside the huge and sprawling collection of the site owner Mark Wilson. We are planning a weekend spectacular on the 23rd and 24th September but are open all other days for those wanting to call in more informally.

Rockaway, Eastcourt Road, Temple Cloud, BS39 5BU

T: 07976 270598 • E: mark@rockawaypark.co.uk • W: www.rockawaypark.co.uk

Directions: We are just off the A37 in Temple Cloud though it is preferable to access the site from Hallatrow. Off site parking will be arranged for the main weekend.

Opening times: 11am - 6pm



S	S	M	T	W	T	F	S	S	M	T	W	T	F	S	S
23	24	25	26	27	28	29	30	1	2	3	4	5	6	7	8

2 SALLY WETHERALL

CERAMICS, DRAWING, PAINTING

Porcelain, stoneware and paperclay figures, and wall pieces. Saggars, glaze, slip, and experimental firings. Drawings and paintings. New work focuses on the landscape and the figure within the landscape. Traces of existence and memory in lanes, holloways, boundaries; weather, water and mud. The figure as observer and creator of landscape and as shaped by it. Prices from £150 - £1400.

Manor Farmhouse, Litton, Near Radstock, BA3 4PW

T: 07974 964605 • E: sallyannewetherall@me.com

Directions: B3114 past The Litton pub on right, right into Litton Lane. Continue 100m or so. Turn left into 'no through road' past the Church on left. Park on gravel drive.

Opening times: 11am - 6pm



S	S	M	T	W	T	F	S	S	M	T	W	T	F	S	S
23	24	25	26	27	28	29	30	1	2	3	4	5	6	7	8



BRUTON SCHOOL

FOR GIRLS

ON SUNNY HILL

Read the
full ISI Report at
www.brutonschool.co.uk

Proudly supporting Somerset Art Weeks Festival

Working with local artist Lydia Needle

Open weekdays 25th Sept – 6th Oct


SUNNY HILL • BRUTON • SOMERSET • T 01749 814400 • W BRUTONSCHOOL.CO.UK





3 Ephemeral and Eternal

MIXED MEDIA, DRAWING, SCULPTURE

Fiona Campbell: Fiona is interested in life forms, metamorphosis, nature's cyclical persistence and interconnectedness. Instinctive building processes include wrapping, weaving and layering using found and reclaimed materials. www.fionacampbellart.co.uk

Angela Morley: Angela's latest work explores the leaf form using natural materials, from chunky to ethereal, stretching abstract forms back to the cusp of functionality. www.wildgardens.co.uk

Workshops for adults and children, including Family Friendly weekend.

Preview: Friday 22 September, 6 - 8pm, all welcome

Round Tower Gallery, Black Swan Arts, 2 Bridge Street, Frome, BA11 1BB

T: 01373 473980 • E: office@blackswan.org.uk • W: www.blackswan.org.uk

Directions: Situated opposite Frome Museum, on the corner of Bridge Street and Justice Lane, off main high street in Frome (B3090). Carpark opposite.

Opening times: 10am - 4pm (Open 1 October for Frome Independent Market)



S	S	M	T	W	T	F	S	S	M	T	W	T	F	S	S
23	24	25	26	27	28	29	30	1	2	3	4	5	6	7	8



Gladys Paulus HINTERLAND

*An installation of ancestral
healing costumes dealing
with identity, belonging,
gender relations and grief*

16 September - 14 October
The Long Gallery

galleries | studios | shop | cafe
2 Bridge Street, Frome BA11 1BB
01373 473980 | www.blackswan.org.uk



OPEN: Mon - Sat 10am - 4pm
and Independent Market Sundays
FREE ENTRY | Registered Charity No 209460

4 PROPORTION AND PERSPECTIVE

FURNITURE, SCULPTURE, WOOD

Nick makes practical but quirky pieces, often with re-claimed materials, exploiting the natural beauty of wood. Nick's boat / lounge featured in a Gold award- winning garden at Chelsea Flower Show in 2016. Cameron carves figurative relief carvings in lime wood telling stories from his life such as seeing Aurora Borealis. (www.cameronscottart.co.uk). Preview 22 September, 6 - 8pm.

Black Swan Arts, 2 Bridge Street, Frome, BA11 1BB

T: 07552 121255 • E: nick_weaver@hotmail.com

W: www.facebook.com/NickWeaverWoodwork/

Directions: See entry 3

Opening times: 10am - 4pm (Open 1 October for Frome Independent Market)

S	S	M	T	W	T	F	S	S	M	T	W	T	F	S	S
23	24	25	26	27	28	29	30	1	2	3	4	5	6	7	8



Good



Offsite



5 CREATIVE PATHWAYS: ELLIE MAWBY

DRAWING

As the climate change movement gathers pace, this exhibition by Creative Pathway Bursary artist Ellie Mawby provides a platform for debate and awareness of environmental concerns. Using handmade paper and ink, the work will explore depths and perception and the irony of the air and atmosphere, which keeps us alive but also harms us.

Cafe and Foyer, Black Swan Arts, 2 Bridge Street, Frome, BA11 1BB

T: 01373 473980 • E: office@blackswan.org.uk • W: www.blackswan.org.uk

Directions: See entry 3

Opening times: 10am - 4pm (Open 1 October for Frome Independent Market)

S	S	M	T	W	T	F	S	S	M	T	W	T	F	S	S
23	24	25	26	27	28	29	30	1	2	3	4	5	6	7	8



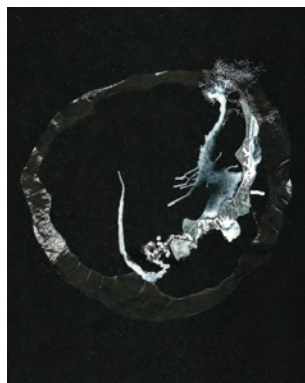
Partial



Offsite



SCW
project



6 KIT SADGROVE, STREET PHOTOGRAPHY

PHOTOGRAPHY

Kit Sadgrove's candid photographs show people in all their moods. From joy to misery and from confusion to excitement, these edgy portraits reveal human cares and triumphs. Shot in stark black and white on the streets of Somerset and beyond, each image tells a story. But it's for you to decide what happened next. Live street photography group session on Sunday 1st October. Details at the venue.

The Archangel, 1 King Street, Frome, BA11 1BH

T: 07960 422676 • E: KitSadgrove@gmail.com • W: www.StreetPhotographyGuide.com

Directions: Off the Market Place, in Frome town centre.

Opening times: 11am - 6pm

S	S	M	T	W	T	F	S	S	M	T	W	T	F	S	S
23	24	25	26	27	28	29	30	1	2	3	4	5	6	7	8



Not good



Offsite



7 MAX MILLIGAN AT SETTLERS STORES

FASHION, PHOTOGRAPHY, TEXTILES

Acclaimed Scottish landscape photographer and author, Max Milligan, will be exhibiting prints from his previous books on Ghana and Scotland and some of his latest work from Iceland. Using the charming Grade 2 listed premises of Settlers Stores on Frome's Cheap Street as his exhibition space, Max has found his natural home with the textile and clothing designers who marry Scottish tweed with vibrant West African prints to create a hand finished collection of contemporary tweed clothing in their onsite workshop.

Settlers Stores, 5 Cheap Street, Frome, BA11 1NH

T: 01373 455044 • E: zara@settlersstores.co.uk • W: www.settlersstores.co.uk

Directions: Walk up Cheap Street, from Frome's Market Square, to find us at No. 5, on the left.

Opening times: 10am - 5pm



Partial



Offsite



S	S	M	T	W	T	F	S	S	M	T	W	T	F	S	S
23	24	25	26	27	28	29	30	1	2	3	4	5	6	7	8



8 GARE HILL ROAD POTTERY

CERAMICS, TEXTILES, WOOD

Russell Coates makes underglaze blue porcelain bowls, dishes, vases, boxes, jugs and mugs, enamelled with birds animals and sea creatures.

Hiro Takahashi creates ceramic sculptures, soul houses, allegorical boats, small animals and some functional pottery.

Trevor West exhibits a range of polished hardwood boxes, pens and jewellery.

Susie Gutteridge: Passion, protection and presentation inspire my work practice. Natural forms and nature stimulate hand made creations using the ancient traditions of wet felting.

The Haven, Gare Hill Road, near Witham Friary, Frome, BA11 5EX

T: 07745 477135 • E: russell.coates@yahoo.co.uk • W: www.russellcoates.co.uk

Directions: From the B3092 at the Frome Show Ground near West Woodlands turn right into Bunn's Lane. Turn left at T-junction, venue is 100m on right.

Opening times: 11am - 6pm



S	S	M	T	W	T	F	S	S	M	T	W	T	F	S	S
23	24	25	26	27	28	29	30	1	2	3	4	5	6	7	8



WELLS Festival of Literature

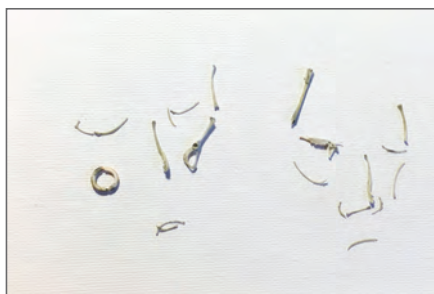
Nick Clegg, Sarah Perry, Stephen Westaby,
Clare Balding, Daisy Goodwin, Fergal Keane,
Helen Czerski, Harriet Harman, A. C. Grayling,
Hollie McNish, June Sarpong, Simon Jenkins,
Andy Hamilton, Owen Sheers, Alan Johnson

At The Bishop's Palace

wellsfestivalofliterature.org.uk

13-21
October

2017



9 BATCOMBE AND BEYOND

PAINTING, PRINTS, DRAWING, PHOTOGRAPHY, SCULPTURE

Eight local artists exhibiting exciting new work in a beautiful setting:

Camilla Frederick (Big Painting Challenge participant): Oil portraiture and still lifes

Vivien Booth: Urban landscapes in pastels, pen and ink

Tamara Stubbs: Photography

Sabine Abraham: Semi-abstract oils exploring the geometry of destroyed environments, textiles

Suzanne Woodward: Mythology inspired watercolours

Amy Yates: Colourful townscapes in oil and print

Camilla Uhlein: Simple arrangements of natural and found objects

Peter Sheldon: 'Pushing the Envelope' - illustrated envelopes.

Tea, coffee, cake and well-known pub next door
Private View: Saturday 23 September, 6 - 8pm

For artists' contact details email
batcombeandbeyond@gmail.com

The Old School House, Back Lane, Batcombe, BA4 6HE

T: 01749 850683

E: batcombeandbeyond@gmail.com

W: www.instagram.com/batcombeandbeyond

Directions: The Old School House, Batcombe, is located between the church, the village hall and the Three Horseshoes Pub. Ample parking accessed off Back Lane.
Opening times: 11am - 5pm

S	S	M	T	W	T	F	S	S	M	T	W	T	F	S	S
23	24	25	26	27	28	29	30	1	2	3	4	5	6	7	8



Good



Onsite





10 MENDIP ART CLUB

PAINTING

Six artists from the Mendip Art Club, Anna Dmochowski, Lyn Dolby, John Hunt, Nick Mayor, Elizabeth Spain and Patience Thom, present a diverse collection of watercolour paintings that reflect life in Somerset and beyond. The exhibition is being held in the Visitor Centre at the Wyke Farms Sustainable Energy Centre.

Visitor Centre, Wyke Farms Sustainable Energy Centre, Lamyatt, BA4 6NX

T: 01749 813478 • E: annadmochowski@googlemail.com

Directions: Located on the road to Bruton, on the south side of the road between the A371 and the village of Wyke Champflower, just south of Lamyatt.

Opening times: 11am - 5pm

S	S	M	T	W	T	F	S	S	M	T	W	T	F	S	S
23	24	25	26	27	28	29	30	1	2	3	4	5	6	7	8



11 DAVID BRAYNE RWS, JANE BRAYNE, NEIL PITTAWAY NEAC, RWS, RE

PAINTING, PRINTS, DRAWING

Master printmaker Neil Pittaway's intricate and wonderful etchings are held in the V&A and Ashmolean collections. Jane's poetic gouaches and watercolours, landscape and still lifes, echo work by Winifred Nicholson and the English Neo-Romantics. David will be showing new work. His large watercolours were recently exhibited at the International Biennale, Qingdao, China.

4 Enfield Terrace, Weymouth Road, Evercreech, BA4 6JE

T: 01749 831006 • E: d.a.brayne@gmail.com • W: www.davidbrayne.wordpress.com

Directions: From A371 take the road to Evercreech at Pecking Mill Inn. Venue located between Weston Town sports ground and converted chapel.

Opening times: 11am - 6pm

S	S	M	T	W	T	F	S	S	M	T	W	T	F	S	S
23	24	25	26	27	28	29	30	1	2	3	4	5	6	7	8



12 SMALL DOWN HOUSE, CHESTERBLADE

PAINTING, PHOTOGRAPHY

Rose Hubbard: I have been experimenting with chemigrams, a cameraless photo technique, to create unique images that fall somewhere between photography and painting. www.facebook.com/rose.hubbard.90. **ashar:** I will be showing my latest series of works entitled 'letting go'. It is about freedom, freedom from fear of failure and expectations, and just letting go. www.facebook.com/ashar.art.5. **Claudia Gunton:** New work in acrylic on board and completed in the last twelve months. My recurring themes are the gleaming lanes and dark trees of winter. www.facebook.com/claudia.gunton. Light refreshments available. An artist available every day.

Small Down House, Chesterblade, Shepton Mallet, Somerset, BA4 4QX

T: 07725 040721 • E: asharart@btinternet.com • W: www.asharart.co.uk

Directions: New venue in the small village of Chesterblade. Accessible and equidistant from Evercreech, Doultong, Cranmore and Batcombe. Just west of the church, on Winterwell Lane, turn into the yard, plenty of parking.



Opening times: 11am - 6pm



S	S	M	T	W	T	F	S	S	M	T	W	T	F	S	S
23	24	25	26	27	28	29	30	1	2	3	4	5	6	7	8



13 PYLLE PAINTERS PLUS

POTTERY, WOOD, TEXTILES

Hannah Collins: Abstract fluid acrylic and resin art.
www.hannahcollinsart.co.uk

Jeffy Salt: Oils and watercolours 'en plein air'.
www.jeffysalt.co.uk

Jinny Wessel: Hand-stitched Italian leather bags and accessories.
www.jinnywessel.co.uk

Paul Boak: Unique turned and carved vessels.

Jane Evans: White stoneware and porcelain functional and decorative pottery.

Joanna Miln: Pastel animal paintings. Pet portrait commissions.
www.joannamiln.co.uk

Leather work, pottery, turned wood, original paintings, prints and cards: prices from £2 to £500.
 Real coffee, homemade cakes and light lunches available daily.

Pylle Village Hall, Pylle Lane, Pylle, BA4 6SZ

T: 07712 587074 • E: info@joannamiln.co.uk

W: www.joannamiln.co.uk

Directions: At junction of A37 and Pylle Lane on southern edge of Pylle, signposted to Pylle Church, Large Car park opposite.

Opening times: 11am - 6pm

S	S	M	T	W	T	F	S	S	M	T	W	T	F	S	S
23	24	25	26	27	28	29	30	1	2	3	4	5	6	7	8



Good



Onsite



Kit Glaisyer

The Cinematic Landscape Paintings

www.kitglaisyer.com

View in Bath & Bridport



14 A LANDSCAPE OF OBJECTS: KILVER COURT IN THE AIR BY DAVID WARD

NEW MEDIA

In the Air is a sound installation created by artist David Ward made specifically for the unique garden at Kilver Court. Various sound recordings are replayed underneath the arches of the great Charlton Viaduct that runs dramatically through these beautiful gardens.

The recordings include speaking and singing voices and ambient, atmospheric sounds, as diverse as different weather conditions and engines, that relate to the cultural and industrial history of this remarkable site.

Part of *A Landscape Of Objects*, a commissioning programme of Somerset Art Works for Somerset Art Weeks Festival 2017.

Funded by Arts Council England and working in partnership with Kilver Court Designer Village.

Artist Talk: Sunday 1 October, 2 - 4pm

Kilver Court Designer Village, Kilver Street, Shepton Mallet, BA4 5NF

T: 01749 340410 • E: info@kilvercourt.com

W: www.kilvercourt.com

Directions: Kilver Court is 30 minutes from Bath and Bristol and only 2.5 hours from London by car. It is located on the main A37 on the outskirts of Shepton Mallet (at the foot of the rolling Mendip Hills) in the heart of Somerset, opposite the cider factory.

Opening times: 10am - 5pm (last entries 4pm)

Entry fee to the garden: £5.

S	S	M	T	W	T	F	S	S	M	T	W	T	F	S	S
23	24	25	26	27	28	29	30	1	2	3	4	5	6	7	8



15 CAROLINE WALSH WARING, JOANNA BRIAR, MICHAEL BROBSON

PAINTING, PRINTMAKING, DRAWING

Enjoy the atmosphere of a lovely country inn and relax whilst viewing an eclectic mix of art. An exhibition for everyone 'prospecting' for original creations. Caroline Walsh-Waring's work is colourful, surreal, fun, unusual, fluid, and full of multiple syllable adjectives. Joanna Briar is a print-maker and weaver producing beautiful work inspired by nature, which reflects her thoughts and feelings. Michael Brobson's work is realistic and atmospheric. Landscapes that inspire a story in the viewers mind. Tap our names into your computer.

The George Inn, Long Street, Croscombe, near Wells, BA5 3QH

T: 01749 342306 • E: mbrobson204@gmail.com • W: www.scarlettart.co.uk/SAWVenue15

Directions: Situated between the City of Wells and Shepton Mallet on the A371

Opening times: 11am - 6pm



S	S	M	T	W	T	F	S	S	M	T	W	T	F	S	S
23	24	25	26	27	28	29	30	1	2	3	4	5	6	7	8

SRLM
SOMERSET RURAL LIFE MUSEUM



FARM

Paintings, drawings and Somerset voices

KATE LYNCH

OPEN TO 3 DEC 2017

#SRLMFARM

SRLM.ORG.UK

CHILKWELL ST, GLASTONBURY, BA6 8DB

ADMISSION AS PART OF MUSEUM ENTRY

Charity Number: 1158791





16 PILTON COLLECTIVE

CERAMICS, PAINTING, TEXTILES, PHOTOGRAPHY

Lavinia Cellan-Jones, Dimitris Koutroumpas, Lis Lawrence, Liam O'Farrell, Elizabeth Tapper

An eclectic mix of work from artists and artisans of Pilton. Influences of the Somerset countryside are evident in the wide range of ceramics, hats, embroidery, fashion accessories, paintings, photographs and book gardens on display. Come and explore our work in this delightful barn and enjoy the landscape of the Glastonbury Festival over a cup of tea and a cake.

Worthy Cottage, Worthy Lane, Pilton, BA4 4BY

T: 01749 890661 • E: lcellanjones@gmail.com

Directions: Signposted from A361 at Pilton

Opening times: 11am - 6pm

S	S	M	T	W	T	F	S	S	M	T	W	T	F	S	S
23	24	25	26	27	28	29	30	1	2	3	4	5	6	7	8



Partial



Onsite



17 DANTE RUBEN TURNER AND PETER LAWRENCE

PAINTING, PRINTS, DRAWING, BOOKS

Peruvian artist **Dante** places the human subject in its own everyday social setting, analysing its presence; demonstrating how the human gaze reveals the human character. **Peter** interprets land and cityscapes from Somerset to the Levant with a bold use of watercolour, texture and collage and is planning his fourth art book publication.

Trefelds Barn, Bowermead Lane, Pilton, BA4 4DS

T: 01749 899400 • E: gpaulturner@hotmail.com • W: www.peterlawrence.uk

Directions: Leave A361 at Burford road sign 100 metres from B3136 to Shepton. Venue is on left after hard 'S' bend before Burford Cross.

Opening times: 12noon - 6pm

S	S	M	T	W	T	F	S	S	M	T	W	T	F	S	S
23	24	25	26	27	28	29	30	1	2	3	4	5	6	7	8



Good



Onsite



SRLM.ORG.UK

SRLM
SOMERSET RURAL LIFE MUSEUM

NEW
DISPLAYS CAFÉ FAMILY TRAIL EXHIBITIONS



Chilwell Street, Glastonbury, BA6 8DB. Summer opening Tues - Sun 10.00 am - 5.00 pm

Admission including Gift Aid £6.00 adult/£4.95 concessions/£2.75 child (under 18 years)/under 5s free CHARITY NO: 1158791

Twitter Facebook Instagram #SRLM

SW
SOUTH WEST
HERITAGE TRUST



18 DEAD PET SOCIETY

PAINTING

A graduate from The London College of Fashion 1998 - 2002, Lucy Alexander's work is often fashion inspired. However, her love of animals and nature can also be seen in her mixed media paintings. Working in both London and Somerset this is her first exhibition with Somerset Art Weeks.

The Studio, Stone Cottage, Shop Lane, Pilton, BA4 4BE

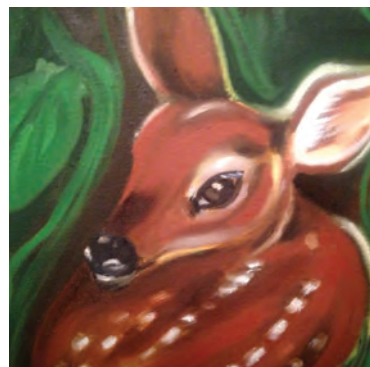
T: 01749 899267 • E: deadpetsocietymail@gmail.com

W: www.instagram.com/deadpetsociety/

Directions: Parking on Shop Lane

Opening times: 11am - 6pm

S	S	M	T	W	T	F	S	S	M	T	W	T	F	S	S
23	24	25	26	27	28	29	30	1	2	3	4	5	6	7	8



19 NORTH WOOTTON VILLAGE HALL

CERAMICS, PAINTING, PRINTS, DRAWING, TEXTILES

Casey Jon, Angela Knapp, Scarlett Martin, Suzy Parker, Angie Rooke, Sarah Truscott, Hannah Willow

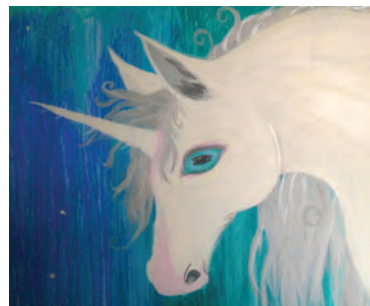
In a glorious riot of colour and magical combinations of textile, weaving, ceramic, paint and silver, 7 creative, inspired women present their latest collections. Celebrating nature, birds, mythology, poetry and folklore, there is plenty to discover at this exhibition. Come and meet the artists and have a welcome cup of tea as you journey on the Somerset Art Weeks trail. Cards, prints and original artwork for sale.

5 Pilton Road, North Wootton, Shepton Mallet, BA4 4ET

T: 01749 890368 • E: angierooke@yahoo.co.uk • W: www.angierooke.co.uk

Directions: Off the main roads between Shepton Mallet, Glastonbury and Wells. Follow the signs down approximately 3 miles of lanes to get to North Wootton village hall.

Opening times: 11am - 6pm



S	S	M	T	W	T	F	S	S	M	T	W	T	F	S	S
23	24	25	26	27	28	29	30	1	2	3	4	5	6	7	X



20 PILTOWN CHAPEL

CERAMICS, JEWELLERY, SILVERWORK, BASKETS

Elizabeth Raeburn and Rodney Lawrence: Pottery established 1976. Represented in museums and collections worldwide. Raku and stoneware. Some sculptural, some useful, sometimes humorous. www.elizabethraeburn.co.uk / www.rodneylawrence.co.uk

Caroline Tetley: Silver jewellery combining bright enamel colours with designs inspired by folklore and the natural world. www.carolinetetley.co.uk

Lorraine Houlden: Baskets, bracelets, necklaces made from Somerset rush. Rye straw jewellery and straw covered boxes. Demonstrations of rushwork.

Piltown Chapel, Piltown, West Pennard, Glastonbury, BA6 8NQ

T: 01749 890501 • E: elizabethraeburn@btinternet.com • W: www.elizabethraeburn.co.uk

Directions: On the main road, A361, in West Pennard

Opening times: 11am - 6pm



S	S	M	T	W	T	F	S	S	M	T	W	T	F	S	S
23	24	25	26	27	28	29	30	1	2	3	4	5	6	7	8



Not good



Onsite



KILVER COURT DESIGNER VILLAGE

DESIGNER SHOPPING | RESTAURANTS | GARDENS & NURSERY

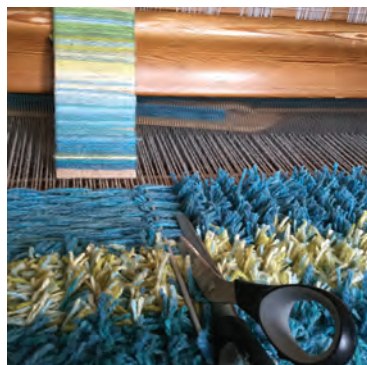


**KILVER COURT
DESIGNER VILLAGE**
SHEPTON MALLET, BA4 5NF

KEEP INFORMED

kilvercourt.com





21 DOVE STUDIOS

PAINTING, PRINTS, DRAWING, POTTERY, TEXTILES

A Treehouse with library, loom and view

A visual celebration of our ecological projects and 'land in common'

A road trip through the American South West

Pottery using local materials

Artists and Makers: Bronwen Bradshaw, Mike Dodd, Pennie Elfick, Diana Griffiths, Foosiya Miller, Diana Milstein, Myfanwy Morris, Sandie Roche, Faye Suzannah, Jim Blackburn

Treehouse Book Artists: Ama Bolton, Laura Burke, Sue Gilmore, Jenny Graham, Fiona Hingston, Tony Martin, Jennifer Newbury

Events

23 September: Weaving demonstration 2pm, Pottery demonstration 3pm

24 September: Screenprinting demonstration 2pm, Treehouse Talk 3pm

7 and 8 October: Design and Draw a Treehouse, Family Picnic, 11am - 4pm

Dove Studios, Barton Road, Butleigh, BA6 8TL

T: 01458 850682 • E: bronbradshaw@yahoo.com

W: www.dovearts.wordpress.com

Directions: On the road between Barton St David and Butleigh. Blue sign in hedge, long drive down to car park at bottom.

Opening times: 11am - 6pm

S	S	M	T	W	T	F	S	S	M	T	W	T	F	S	S
23	24	25	26	27	28	29	30	1	2	3	4	5	6	7	8



Partial



Onsite



CREATIVE PATHWAYS: SUE GILMORE

Sue Gilmore has recently graduated with a BA (Hons) in Painting. Her practice has evolved in a way that focuses on the work she has done with willow trees. She is interested in the material aspects of willow, making her own charcoal, whilst maintaining links to the living willow sculptures that she has nurtured. She will create an artist's book as part of the collection in the Tree House Library, reflecting the creative and environmentally sensitive nature of the studios and adjoining space.

www.sue-gilmore.com

saw
project

22 FOOTPRINTS IN TIME

FILM, MIXED MEDIA, TEXTILES, FASHION

This exhibition is an exciting collaboration between local artists Elena Hutchcroft, Karolina Nieduza and Charlotte Humpston and the Alfred Gillett Trust. Karolina and Elena are producing an art installation in response to the importance of shoemaking in Street. All of the artists will also be displaying their own works within this historic site.

The Grange, Farm Road, Street, BA16 0BQ

T: 01458 444060 • E: enquiries@agtrust.org.uk

W: www.alfredgilletttrust.org/whats-on/saw17/

Directions: Entrance to the right of the food court entrance to Clarks Village. Sat Nav: BA16 0BB.

Opening times: 11am - 6pm

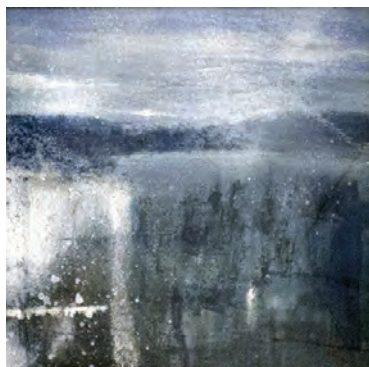
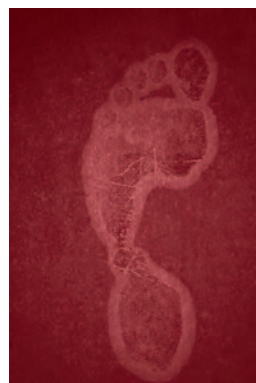
S	S	M	T	W	T	F	S	S	M	T	W	T	F	S	S
23	24	25	26	27	28	29	30	X	X	X	X	X	X	X	X



Partial



Offsite



23 RED BRICK BUILDING

PAINTING, PRINTS, DRAWING, PHOTOGRAPHY, FILM, NEW MEDIA

An exhibition of local artists including **Matthew West, Paul Branson, John Fleming, Joseph Hunwick, Francis Morland, Ramona Belcher, Julie Lovelock, Emma Sparks, Andrew Gowland** and **The Glastonbury Film Challenge**. We are also hosting events including our SAW private view party on 22 September, Plop! - children's theatre on 30 September, and Bocabar Jazz on 6 October. Award winning bar and kitchen, open daily for breakfast, lunch, dinner. www.bocabar.co.uk

Morland Road, Glastonbury, BA6 9FT

T: 01458 899564 • E: events@redbrickglastonbury.co.uk

W: www.redbrickbuilding.co.uk

Directions: Morland Road, Glastonbury, BA6 9FT, next to Bocabar.

Opening times: 11am - 6pm

S	S	M	T	W	T	F	S	S	M	T	W	T	F	S	S
23	24	25	26	27	28	29	30	1	2	3	4	5	6	7	8



Good



Onsite



24 GRACE ARTS

TEXTILES, PAINTINGS, WOOD

An exhibition of work by Grace Arts group, including textiles by **Amanda Gould**, woodwork by **Paul Botterill**, paintings by **Hazel Wood**, photography by **Simon Williams**, and collage by **Fiona Shaw**.

Unit 2 Landmark House (Grace Community Church), Wirral Park Road, Glastonbury, BA6 9FR

T: 01458 837846 • E: oldparson@me.com

Directions: A39 from Glastonbury, turn right at B&Q roundabout, past Tesco, Landmark House is on your right, venue next to Monahans.

Opening times: 11am - 5pm

S	S	M	T	W	T	F	S	S	M	T	W	T	F	S	S
23	24	25	26	27	28	29	30	X	2	3	4	5	6	7	X



Good



Onsite





25 GATHER-ING

METALWORK, TEXTILES, MIXED MEDIA

SCW
project

This contemporary craft exhibition shows specially created work by artists **Stewart Easton** and associates, **Christopher Jelley**, **Jacky Oliver**, **Helen Snell**, and **Gillian Widden**. The title 'Gather-ing' references the function of a tithe barn as a space to collect / bring / gather people, animals and crops as well as a symbolic meeting place to gather for ritual celebration.

Somerset Rural Life Museum, Chilkwell Street, Glastonbury, BA6 8DB

T: 01458 831197 • E: SRLM@swheritage.org.uk

W: www.SRLM.org.uk

Directions: Follow brown tourism signs located on all approaches to Glastonbury.
Opening times: 10am - 5pm. Charges apply.

S	S	M	T	W	T	F	S	S	M	T	W	T	F	S	S
23	24	25	26	27	28	29	30	1	2	3	4	5	6	7	8



26 TERRY MACEY AND ANGELIKA ELSEBACH

TEXTILES, FASHION

A collection of beautiful stylish clothes in specially commissioned Scottish tweeds, Irish linens and jewel coloured silks. Angelika and Terry design for women of every age and size and provide individual fittings if required in their Glastonbury Studio or at the many exhibitions they attend nationally. Appointments are welcome throughout the year. A selection of scarves and fabric offcuts will also be available.

Avalon Hall, Silver Street, Glastonbury, BA6 8BS

T: 01458 898691 • E: terry@terrymacey.com • W: www.terrymacey.com

Directions: Avalon Hall is on the corner of Silver Street (parallel to Glastonbury High Street). Parking is available at the end of Silver Street.

Opening times: 11am - 5pm

S	S	M	T	W	T	F	S	S	M	T	W	T	F	S	S
23	24	25	26	27	28	29	30	1	2	3	4	5	6	7	8



27 MADE IN GLASTONBURY

FURNITURE, INTERIORS, MIXED MEDIA, PHOTOGRAPHY

We are a group of seven artists and makers from Glastonbury who exhibit together. We will be showing a wide range of art and crafts in the beautiful setting of The Old Vicarage. Enjoy refreshments and homemade cakes in the delightful garden. Yulia Allen: Silk painter and soft furnishing. Sue Allen: Mixed media artist. Jan Billings: Mosaic artist. Kate Dimambro: Paintings and decorative objects. Belinda J Miers: Works with reclaimed wood. Stephen Spraggon: Landscape photographer. Don Storey: Bespoke furniture maker

The Old Vicarage, 17 Lambrook Street, Glastonbury, BA6 8BY

T: 01458 741109 • E: glastonburysue@aol.com • W: www.made-in-glastonbury.co.uk

Directions: From the top of Glastonbury High Street turn right into Lambrook Street - The Old Vicarage is situated just opposite the top of Silver Street and facing The Abbey House walls.

Opening times: 11am - 5pm

S	S	M	T	W	T	F	S	S	M	T	W	T	F	S	S
23	24	25	26	27	28	29	30	1	2	3	4	5	6	7	8





28 FRAMEUS, THE WORKSHOPS

JEWELLERY, SILVERWORK, FURNITURE, INTERIORS, WOOD

Nerys Davies: A range of exquisite handcrafted jewellery in platinum, gold, silver, precious gemstones, diamonds and pearls. Renowned for her expertise Nerys uses the finest materials and jewellery making techniques to create one-off stunning pieces. Choose from Nerys' collection on display at Frameus or discuss a bespoke commission. www.nerysdavies.com

Simon Morris: Simon has gained an excellent reputation in furniture design and making. He is renowned for his skill in creating striking, individual handcrafted pieces. Commissions are undertaken, unique to every customer. View his work at Frameus. www.lufufurniture.com

Frameus, The Workshops, Market Street, Wells, BA5 2DS

T: 01749 677611 • E: goldsmith@nerysdavies.com

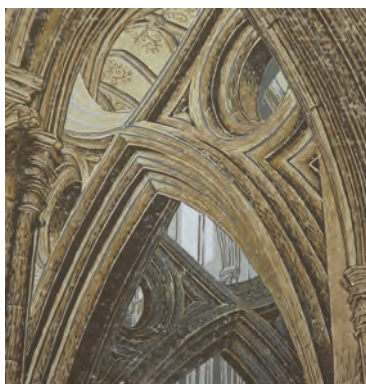
Directions: Princes Road bus station car park. Right onto Market Street. Second court yard on right through red brick archway (Frameus).

Opening times: Monday - Saturday 10am - 5pm, Sunday 10am - 3pm



Not good P Offsite

S	S	M	T	W	T	F	S	S	M	T	W	T	F	S	S
23	24	25	26	27	28	29	30	1	2	3	4	5	6	7	8



29 PAPER PROSPECTS

PAPER, PRINTMAKING

Celebrating paper making and its uses. Paper starts projects; sketch book doodles become designs, ending in print. Paper becomes a whole project; in hand made paper and paper objects. On display: paper from St Cuthbert's Mill and Two Rivers Paper Company along with Guild Makers' work where processes and outcomes are informed by paper. Demonstrations by 'Guild Makers' will run throughout the duration of the festival.

23a Broad Street, Wells, BA5 2DJ

T: 01749 671112 • E: gallery@somersetguild.co.uk • W: www.somersetguild.co.uk

Directions: Found through the archway on Broad Street, behind Pickwicks Cafe.

Opening times: 10am - 4pm

S	S	M	T	W	T	F	S	S	M	T	W	T	F	S	S
23	24	25	26	27	28	29	30	1	2	3	4	5	6	7	8

Good P Offsite

30 CHRIS LEE AND FRANCES HARDEN

PAINTING, PRINTS, DRAWING

The longest gallery in Somerset featuring the work of Chris Lee and Frances Harden. Stretching from Frances' studio in Sadler Street and showing in over 25 shops throughout Wells.

Chris Lee's famously wobbly architectural paintings and sensitive watercolours and photos by Frances.

Half Mile Gallery, High Street, Wells, BA5 2SN

T: 07979 592836 • E: cre@tivity.co.uk • W: www.chrisleedrawing.com

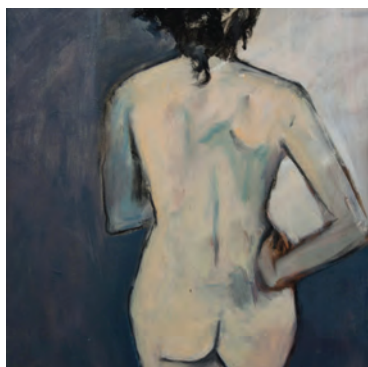
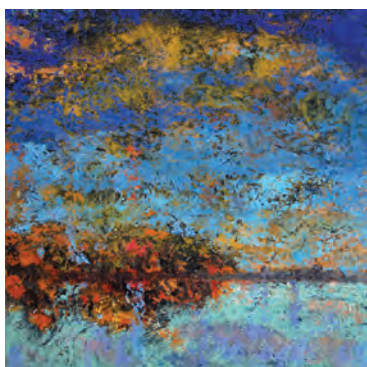
Directions: The whole length of Wells High Street and further.

Opening times: 11am - 6pm

S	S	M	T	W	T	F	S	S	M	T	W	T	F	S	S
23	24	25	26	27	28	29	30	1	2	3	4	5	6	7	8

Good P Offsite





31

HERITAGE COURTYARD STUDIOS AND GALLERY

PAINTING, PRINTS, DRAWING

Heritage Courtyard Studios is a unique facility in the heart of Wells for artists and art lovers alike. It incorporates 10 artists' studios, a gallery, plus an educational space for workshops and talks.

For information about our ongoing workshops and events see our website below.

Studio artists participating are:

Heather Wallace: Fine artist

Rebecca Barnard: Fine art painting

Cathy Charles: Portraiture and mixed media

Irene Dickson: Graphic artist and mixed media

Elizabeth Hand: Fine artist

Molly Briton: Drawing and stone carving

Dickon O'Hagan: Three dimensional paper cutting artist

Stuart Davis: Portraiture

Kim DeVries: Fine art painting

Heritage Courtyard Studios, 6 Heritage Courtyard, Sadler Street, Wells, BA5 2RR

T: 07974 255016

E: art@heatherjanewallace.co.uk

W: www.heritagecourtyardstudio.com

Directions: Travelling down Sadler Street, Heritage Courtyard is on the right just before the Swan Hotel and close to the Market Square.

Opening times: 10am - 4pm

S	S	M	T	W	T	F	S	S	M	T	W	T	F	S	S
23	24	25	26	27	28	29	30	1	2	3	4	5	6	7	8



Not good



Offsite



32 'MUSE' AT WELLS AND MENDIP MUSEUM

MIXED MEDIA

Sean Harris

Wells and Mendip Museum is one of eight venues across Somerset and Devon taking part in Muse, a project which has enabled contemporary artists to respond to the fascinating historic collections held within community museums within the two counties. See inside back cover for more information.

Find out more about Muse: musemakers.wordpress.com

Wells and Mendip Museum, 8 Cathedral Green, Wells, BA5 2UE

T: 01749 673477 • E: admin@wellsmuseum.org.uk • W: www.wellsmuseum.org.uk

Directions: The Museum is located at the heart of Wells along the western edge of Cathedral Green, between the Cathedral and Vicars Close. It is also within easy walking distance (10 minutes) of the main car parks, and the bus station.

Opening times: September 10am - 5pm, October 10am - 4pm. Entry fees apply.



SOW
project

S	S	M	T	W	T	F	S	S	M	T	W	T	F	S	S
23	24	25	26	27	28	29	30	X	2	3	4	5	6	7	X



33 WELLS CATHEDRAL SCHOOL

An inspiring and eclectic exhibition of artwork by Wells Cathedral School pupils in the John Baxter Foyer, Cedars Hall, our state-of-the-art music, arts and learning venue.

Please check our website for private view date and opening times: wells.cathedral.school

The John Baxter Foyer, Cedars Hall, Well Cathedral School, Wells, BA5 2ST

T: 01749 834200 • E: l.bridson@wells.cathedral.school

W: www.wells.cathedral.school

Directions: Please enter the school site on College Road, opposite Stable Yard. Cedars Hall will be facing you. Follow the path opposite the College Road entrance and you will see the main entrance to the right. The exhibition will be in the John Baxter Foyer.

Opening times: Please check the school website



S	S	M	T	W	T	F	S	S	M	T	W	T	F	S	S
23	24	25	26	27	28	29	30	1	2	3	4	5	6	7	8



34 ANDELLI ART

GALLERIES, PAINTING, JEWELLERY

Challenging preconceived ideas and notions of the portrayal of landscape and seascape painting, this exhibition showcases the diversity and beauty of work by West Country artists Malcolm Ashman and Janette Kerr juxtaposed with 20th Century works by Roy Turner Durrant, Simon Palmer, Zdzislaw Ruszkowski, Julian Trevelyan and others. Private View: 22 September, 6.30 - 8.30pm.

Mendip House, Upper Breach, South Horrington, Wells, BA5 3QG

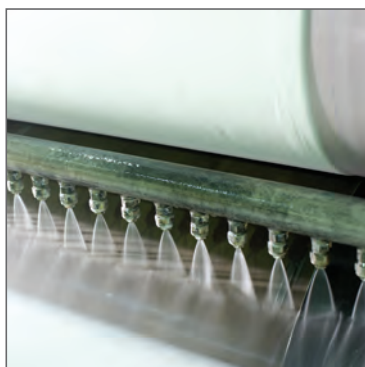
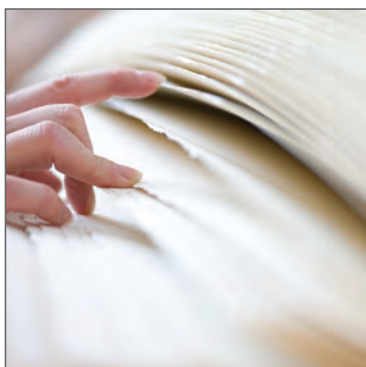
T: 01749 572373 • E: ellieruthparryjones@gmail.com • W: www.andelliart.com

Directions: Turn on Upper Breach from the Bath Road (B3139). Mendip House's driveway faces you once you reach the far end of the road (just before it turns a corner).

Opening times: 11am - 5pm

S	S	M	T	W	T	F	S	S	M	T	W	T	F	S	S
23	24	25	26	27	28	29	30	X	3	4	5	6	7	X	





35 ST CUTHBERTS MILL

ARTIST PAPER

St Cuthberts Mill is opening to the public for the first time, giving exclusive tours of this historic paper mill. Visitors will view how exquisite artists papers like Bockingford, Saunders Waterford and Somerset are still made using a 100 year old paper machine in a mill surrounded by landscaped gardens, under the watchful eyes of two marble lions.

PLEASE NOTE: This is strictly a pre-booked ticketed event. Please email events@stcuthbertsmill.com to book a FREE ticket. Over 18s only.

St Cuthberts Mill is an 18th century working paper mill with uneven ground, steep steps, and slippery surfaces.

Haybridge, Wells, BA5 1AG

E: events@stcuthbertsmill.com • W: www.stcuthbertsmill.com

Directions: A371 in Haybridge (west of Wells) turn at the sign for Wookey Hole Caves. St Cuthberts Mill is 100 yards on the left.

Opening times: By appointment only

Not good Onsite

S	S	M	T	W	T	F	S	S	M	T	W	T	F	S	S
X	X	24	25	26	27	28	29	30	X	2	X	4	5	X	X

36 ORCHARD VALE TRUST

CERAMICS, TEXTILES

Orchard Vale Trust provides residential homes and day services for adults with learning difficulties. We offer unique and original items for sale, including felt cushions, bags and jewellery, silk scarves, rugs, handmade cards, needlepoint items and bold ceramics for the home and garden.

East Court, Doctors Hill, Wookey, BA5 1AR

T: 01749 673122 • E: Jackie.McNaughton@orchardvaletrust.org.uk • W: www.orchardvaletrust.org.uk

Directions: From the centre of Wookey, follow the signs up Doctors Hill. We are on the left.

Opening times: Weekdays 10am - 12noon and 2 - 4pm, weekends 11am - 4pm

S	S	M	T	W	T	F	S	S	M	T	W	T	F	S	S
X	X	24	25	26	27	28	29	30	1	2	3	4	5	6	X

Partial Onsite



Opening times: 11am - 5pm

S	S	M	T	W	T	F	S	S	M	T	W	T	F	S	S
23	24	X	26	27	28	29	30	1	X	X	5	6	7	8	

Good Onsite

37 MYRTLE PIZZEY

PRINTMAKING, DRAWING, PHOTOGRAPHY

An exhibition of drawings, paintings and linocuts by Myrtle Pizey. Images of local surroundings are translated into relief form prints, some colour and some black and white with added watercolour. Price range £50 to £500 for drawings or prints.

Postcard sized digital photographs of the Somerset Levels by artist / photographer Jason Pizey.

Hill Farm, Castle Lane, Wookey, BA5 1NN

T: 01749 678006 • E: myrtlepizey@icloud.com

W: www.myrtlepizey.co.uk

Directions: Follow the A371 from wells fork left onto the B3139, turn left into Castle Lane and follow the signs.

38 MARTIN PENNYCOTT AND NICKY BINKS

PAINTING, PRINTS, DRAWING

Godney, a hidden and fascinating bohemian village with original and interesting art. Visit the wonderful Sheppey Inn and Double Gate Tearooms.

Nicky Binks: Oils, drawings and ink sketches - vibrant jewel-like still lifes, larger studies and portraits. **Martin Pennycott:** Oils, pen and ink watercolours - Reflections of the Somerset landscape. Work from £45. Cards and prints.

Godney Old Post Office, Upper Godney, Wells, BA5 1RY

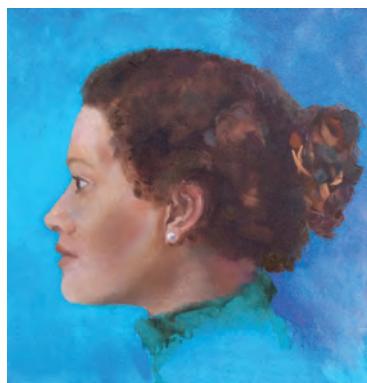
T: 01458 831158 • E: godneyposthouse@gmail.com • Follow us on Facebook

Directions: Godney is off the A39 between Wells and Glastonbury. The Old Post Office is 600 yards into the village on the left hand side.

Opening times: 11am - 6pm

S	S	M	T	W	T	F	S	S	M	T	W	T	F	S	S
23	24	25	26	27	28	29	30	1	X	X	X	5	6	7	8

 Partial  Onsite



39 THE SHEPPEY

PAINTINGS, MIXED MEDIA, SCULPTURE

Three contemporary Artists in rural England... and their response to coming changes. Simon Ledson, Steve Burden and Mark Hey.

The Sheppey is open 7 days a week from 12noon to 12midnight during Art Weeks.

The Sheppey, Lower Godney, BA5 1RZ

T: 01458 831594 • E: hi@thesheppey.co.uk • W: www.thesheppey.co.uk

Directions: 10 minutes from Wells. 8 minutes from Glastonbury. 12 minutes from Wedmore.

Opening times: 11am - 6pm

S	S	M	T	W	T	F	S	S	M	T	W	T	F	S	S
23	24	25	26	27	28	29	30	1	2	3	4	5	6	7	8

 Good  Onsite



40 SOMERSET CRAFTS

CERAMICS, GLASS, JEWELLERY, MOSAICS, PAINTINGS, PHOTOGRAPHY, PRINTMAKING, SCULPTURE, TEXTILES, WOOD

Open all year Somerset Crafts Gallery is an exciting arts and crafts centre in the heart of the Avalon Marshes celebrating the work of artists and makers living and working in Somerset. Inspired by the beautiful location, art works on show include ceramics, glass, jewellery, mosaics, paintings, photography, printmaking, sculpture, textiles and wood.

Refreshments available through award winning Eco Friendly Bites.

Beautiful walks along many well marked trails.

Avalon Marshes Centre, Shapwick Road, Westhay, BA6 9TT

T: 01458 860426 • E: somersetcrafts2@gmail.com

W: www.somersetcrafts.com

Directions: Follow brown signs to Avalon Marshes Centre on the road between Shapwick and Westhay.

Opening times: 10am - 5pm



 Good  Onsite  

S	S	M	T	W	T	F	S	S	M	T	W	T	F	S	S
23	24	25	26	27	28	29	30	1	2	3	4	5	6	7	8



41 ART AT HIDE ON THE HILL

PAINTING, PHOTOGRAPHY, TEXTILES, SCULPTURE

Start your visit strolling past willow sculptures by **Angela Morley** then into a grand yurt displaying textiles by **Janine Barchard** and photographs by **James Cawte**.

Onto the studios to see paintings by **Wendy Lovegrove**, **Pip Wilson** and **Tom Sleigh**, with sculpture by **Lorna Brown**.

Open all days with your very own prospect across acres of sky. Sit and view with refreshments on site.

Extended view Friday 29 September until 9pm. Parking in nearby field but with separate venue parking for disabled.

Stoney Stile, Snake Lane, Newtown, Panborough, BA5 1PW

T: 07824 845186 • E: shaun.thorogood@gmail.com

W: www.hideonthehill.co.uk

Directions: Parking field and venue (for disabled) will be clearly signed for drivers who should avoid last instruction on their satnav. Snake Lane accesses venue.

Opening times: 11am - 6pm

S	S	M	T	W	T	F	S	S	M	T	W	T	F	S	S
23	24	25	26	27	28	29	30	1	2	3	4	5	6	7	8



Good



Onsite



Bocabar
Award winning independents
BRISTOL • GLASTONBURY

Over 30 Boca pizzas (Bristol only)
Locally sourced seasonal menus
Cocktails + craft beers
Live music + DJs

Paintworks, Bath Road, Bristol BS4 3EH • T: 0117 972 8838
The Red Brick Building, Morland Road, Glastonbury,
Somerset BA6 9FT • T: 01458 440558

www.bocabar.co.uk

WARM GLASS

For all your Fused Glass Supplies
www.warm-glass.co.uk

42 'MUSE' AT AXBRIDGE MUSEUM

MIXED MEDIA

Andrea Oke

King John's Hunting Lodge is one of eight venues across Somerset and Devon to take part in Muse, a project which has enabled contemporary artists to respond to the fascinating historic collections held within community museums within the two counties. See inside back cover for more information.

Find out more about Muse: musemakers.wordpress.com

King John's Hunting Lodge, 1 High Street, Axbridge, BS26 2AP

T: 01934 732012 • E: info@kingjohnshuntinglodge.co.uk • W: www.beewhizz.co.uk/KJHL/WP/

Directions: From M5 Junction 22 take A38 north bound towards Bristol. At the village of Cross turn right and follow signs to Axbridge. From Bristol take A38 south to Cross, turn left and follow signs to Axbridge. Number 126 bus route.

Opening times: 1 - 4pm. Entry by donation.



S	S	M	T	W	T	F	S	S	M	T	W	T	F	S	S
23	24	25	26	27	28	29	30	1	2	3	4	5	6	7	8



43 HOPEDENE STUDIO

CERAMICS, PAINTING, PRINTS, DRAWING, WOOD

Juliet Arnison: Specialises in illustration and laser cutting, creating 3D artworks and lampshades. **Tina Dodd:** A mainly monochromatic exploration of the landscape using drawing, paint and printmaking. **Bridget Morrison:** An eclectic range of beautiful hand crafted pottery and ceramics. Refreshments at weekends. Set in a beautiful location. Gifts and bespoke artworks £2 - £1000.

Hopedene, Sparrowhill Way, Weare, Axbridge, BS26 2LN

T: 01934 733930 • E: juliet.arnison@btinternet.com

W: www.julietarnison.wix.com/hopedene

Directions: From A38 turn onto Nottingham Way (signposted Weare & Wedmore). At school turn left onto Sparrowhill Way and follow arrows.

Opening times: 11am - 5pm

S	S	M	T	W	T	F	S	S	M	T	W	T	F	S	S
23	24	25	26	27	28	29	30	1	2	3	4	5	6	7	8



44 WILD EDGE GALLERY

JEWELLERY, PAINTING, PRINTS, DRAWING, SCULPTURE

A collection of new works by professional artists in a wide variety of media, including fine jewellery, original paintings, drawings, words and sculpture. Working to the theme 'Prospect', the artists have explored the search for hidden treasures, the environment, landscape and the often overlooked value of what is concealed within.

Erica Sharpe: Fairtrade fine jewellery, watercolours and drawings.

Jim Starr: Paintings, screen-print and mixed media.

M H Goldsmith: Fine jewellery.

Ian Marlow MRBS: Sculpture and words.

8 / 9 Borough Mall, Wedmore, BS28 4EB

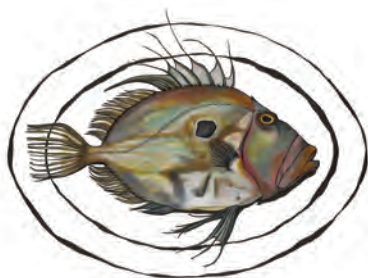
T: 01934 710448 • E: info@ericasharpe.co.uk • W: www.ericasharpe.co.uk

Directions: From The Borough, Wedmore, enter The Borough Mall (on your left from Bristol, right from Wells) and we are situated on the left.

Opening times: Monday - Friday 10am - 5pm, Saturday 10am - 3pm



S	S	M	T	W	T	F	S	S	M	T	W	T	F	S	S
23	24	25	26	27	28	29	30	1	2	3	4	5	6	7	8



45 WAGON HOUSE GALLERY

CERAMICS, PAINTING, PRINTS, DRAWING, SCULPTURE

Sharon Campbell, Barbara Karn, Chris Lee, Michael Martin, Farouk Qadir, Annette Rigler, Angela Uren, and others

A feast of food and art. Two floors of diverse and interesting contemporary art works. Delicious homemade lunches and tea, coffee and cakes will be available in the farmhouse kitchen.

All profits to Help the Child a local charity providing specialist equipment for disabled children in Somerset.

A warm welcome awaits.

Hill Farm, 7 Blacksmiths Lane, Shapwick, TA7 9LZ

T: 01458 210555 • E: merielmatthews@gmail.com

Directions: Off A39 between Bridgwater and Street. Blacksmiths Lane is at the 30mph sign at the southern end of Shapwick village.

Opening times: 11am - 6pm



S	S	M	T	W	T	F	S	S	M	T	W	T	F	S	S
23	24	25	26	27	28	29	30	X	X	3	4	5	6	7	X



Nynehead Court

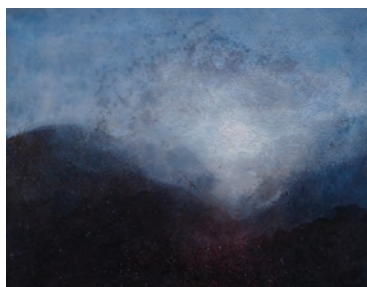
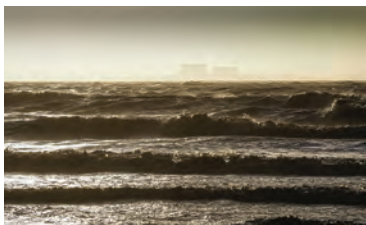
Orangery gallery exhibition by Mary Cobbe

Sculpture park and gardens open to the public 10am - 4pm

NYNEHEAD, WELLINGTON, SOMERSET TA21 0BW

01823 662481 • www.nyneheadcourt.co.uk • nyneheadcare@aol.com





46 SPRING FARM ARTS: WAYS OF SEEING

PAINTING, PRINTS, DRAWING, PHOTOGRAPHY, TEXTILES

Jenny Graham: Atmospheric paintings of land and water in a variety of media and sizes. Also mixed-media cabinets of curiosity. www.jennygraham.co.uk

Anne Farmer: Vibrant, expressive watercolours which transform the gentle lines and subtle colours of the local lanes and fields. www.annefarmer.net

Pam Martin: A life long stitch maker who works passionately with textiles and stitch to create work inspired by the Somerset landscape. www.somersetstitch.blogspot.co.uk

David Graham: Subtle but powerful photographs of the coastline from Yorkshire to Somerset. Unframed prints and cards. www.davidgrahamphotos.co.uk

Spring Farm, Spring Lane, Moorlinch, Bridgwater, TA7 9DD

T: 01458 210393 • E: info@springfarmarts.co.uk

W: www.springfarmarts.wordpress.com

Directions: Moorlinch is signposted off the A39 between Bridgwater and Glastonbury, and off the A361 between Street and Taunton. Further signs in the village direct you to Spring Lane.

Opening times: 11am - 5pm



S	S	M	T	W	T	F	S	S	M	T	W	T	F	S	S
23	24	25	26	27	28	29	30	1	2	3	4	5	6	7	8



Not good



Onsite



47 JACKIE CURTIS AND LORNA DAVIES

PRINTMAKING, TEXTILES, PAINTING, PRINTS, DRAWING

This vibrant exhibition of printmaking and quilting combines stylised pattern and design with spontaneous natural interpretations.

Lorna Davies is inspired by organic and geometric shapes using them in conjunction with colour to create dynamic modern and subtle traditional quilts. She quilts with free motion embroidery utilising patchwork, bargello and ribbon star techniques.

Jackie Curtis is an innovative printmaker influenced by Somerset's landscapes and birds. She creates striking linocuts, woodblocks which emphasise natural grain, textured collagraphs and unique atmospheric monoprints.

Bay Cottage, 2 Greenfield Lane, Bawdrip, near Bridgwater, TA7 8PX

T: 01278 685911 • E: jcurtisart@btinternet.com • W: www.jcurtisart.com

Directions: Head to centre of Bawdrip from A39. Greenfield Lane is off Church Road which rings the church.

Opening times: 10am - 6pm



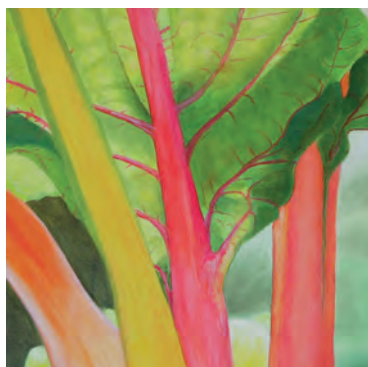
Partial



Onsite



S	S	M	T	W	T	F	S	S	M	T	W	T	F	S	S
23	24	25	26	27	28	29	30	1	2	3	4	5	6	7	8



48

STUDIO WOOLAVINGTON ART GROUP

PAINTING, PRINTS, DRAWING

Studio Woolavington Art Group meets once a week with artist / teacher **Angela Watson** whose work reflects the vibrancy of the natural world in oil, acrylic, mixed media and cyanotype print making.

From over 25 group members **Marion Bayliss, Anne Evans, Sharon Harrison, Wendy Hofmaier, Lynne Kett, Judith Mills, Shirley Moore, Cliff Mylechreest, and Carolyn Pickford** are exhibiting an exciting range of work with Angela at St Mary's Church.

Refreshments available for your enjoyment and a warm welcome. Price range £10 - £300.

St Mary's Church, Church Street, Woolavington, TA7 8DP

T: 07855 464126

E: enquiries@studiowoolavingtonartgroup.co.uk

W: www.studiowoolavingtonartgroup.co.uk

Directions: From A39 Glastonbury - Bridgwater road take B3141 north signposted Woolavington at Bawdrip petrol station. Continue down Woolavington Hill beyond pedestrian crossing and the church is shortly on your right. Parking outside in Church Street. Opening times: Tuesday - Sunday 11am - 6pm

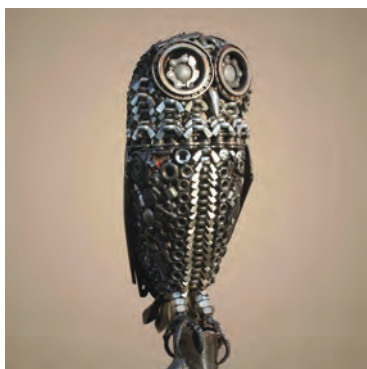
S	S	M	T	W	T	F	S	S	M	T	W	T	F	S	S
23	24	25	26	27	28	29	30	1	2	3	4	5	6	7	8



Good



Offsite



49 A LOAD OF OLD SCRAP

METALWORK, SCULPTURE, FURNITURE, INTERIORS

We live in a throw away world and that is where I come in. I transform old tools, vehicle parts, bicycles etc into one-off sculptures of varying sizes. For Somerset Art Weeks I am transforming my studio into an exhibition space to showcase my work. Sculptures from as small as a snail to a 6ft woman will be on display. Please come and enjoy my creations. I will be in the studio and open daily from 10am - 6pm.

The Old Chapel, Causeway, Woolavington, TA7 8DN

T: 07717 202182 • E: nick@aloadofoldscrap.co.uk • W: www.aloadofoldscrap.co.uk

Directions: At the bottom of the hill on the main road in Woolavington next door to the shop 'Grandmas'.

Opening times: 10am - 6pm

S	S	M	T	W	T	F	S	S	M	T	W	T	F	S	S
23	24	25	26	27	28	29	30	1	2	3	4	5	6	7	8

Partial Onsite



50 THE OLD PIGGERY

PAINTING, PRINTS, DRAWING, MIXED MEDIA, TEXTILES

Judith Champion: Atmospheric drawings and paintings in and around Somerset. Oils, acrylic, ink and reeds.

Lynne Arlow: Textile artist, using fabrics, patchwork and threads to describe place and time. www.somersetquilt.com.

Middle Burnham Farm, Stoddens Lane, Burnham-on-Sea, TA8 2DF

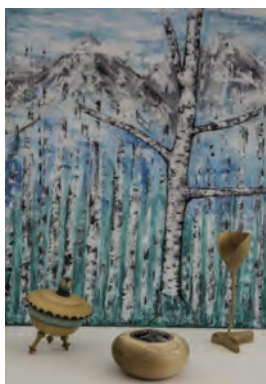
T: 07711 511134 • E: jechampion@yahoo.com • W: www.championart.org.uk

Directions: M5 J22 roundabout with A38 - head towards Burnham-on-Sea. Take 1st right (Stoddens Lane), continue to end of lane. Venue on RHS opposite 'Give Way 50yds' sign. See flags! No need to leave cars on road, please drive in and park.

Opening times: Monday - Saturday 11am - 5pm, Sunday 2 - 5pm

S	S	M	T	W	T	F	S	S	M	T	W	T	F	S	S
23	24	25	26	27	28	29	30	1	2	3	4	5	6	7	8

Partial Onsite



51 JANEY BRIMS AND JOHN RUFFLE

PAINTING, WOOD, PHOTOGRAPHY

Inspired by nature, Janey Brims and John Ruffle create artefacts in response to their environment. A Director of Max Carey Woodturning Trust, John loves wood's potential for creating interesting designs. Weekend turning demonstrations.

www.artinwoodturning.com. A love of nature shines through Janey's work. Landscape, dreams, wildlife and mythology inspire her imagination and painting. £2 - £1700.

12 Julians Acres, Berrow, Burnham-On-Sea, TA8 2LZ

T: 07954 165655 • E: lunarscapecraftemporium@gmail.com

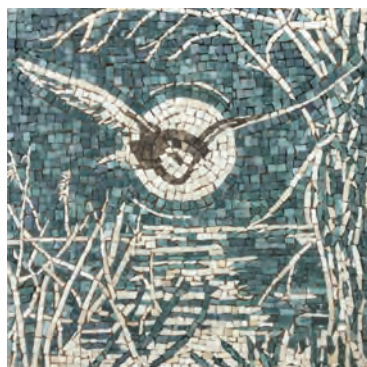
W: www.lunarscapecraftemporium.co.uk

Directions: From M5 J22 follow signs to Berrow and Blean. In Berrow go past the Green and then take the second left into Church House Road. Take the next immediate left into Julians.

Opening times: 10am - 6pm

S	S	M	T	W	T	F	S	S	M	T	W	T	F	S	S
23	24	25	26	27	28	29	30	1	2	3	4	5	6	7	8

Not good Offsite



52 THE CHANDOS SOCIETY OF ARTISTS

The Chandos Society of Artists was founded in 1962 and today's members are a highly regarded group of artists. Their exhibition for this year's Somerset Art Weeks explores the theme of 'Prospect' in many of the genres: oil, watercolour, acrylic, textiles, photography and mosaic. Twelve members will be displaying their works in the historic and elegant surroundings of the newly refurbished gallery at Bridgwater Arts Centre. Prices: £5 - £500. Refreshments available.

Bridgwater Arts Centre, 11 - 13 Castle Street, Bridgwater, TA6 3DD

T: 07745 652748 • E: Chandos@macace.net • W: www.chandosartistsociety.uk

Directions: Google 'Bridgwater Arts Centre' for map

Opening times: 10am - 5pm

S	S	M	T	W	T	F	S	S	M	T	W	T	F	S	S
23	24	25	26	27	28	29	30	1	2	3	4	5	6	7	8



53 IGNITE SOMERSET

FILM, NEW MEDIA

A selection of work from Somerset artists who have collaborated with Ignite, our Arts Council supported programme passing on digital skills to artists in all artforms. Plus a special screening of International Art Films from Oberhausen Film Festival 2016 on Saturday 23 September at 7pm.

The Engine Room, 52 High Street, Bridgwater, TA6 3BL

T: 01278 433187 • E: info@somersetfilm.com • W: www.somersetfilm.com

Directions: From St Mary Street, follow Cornhill round onto the High Street. The Engine Room is on the right just after the junction with Lamb Lane.

Opening times: 10am - 4pm, plus Special Screening Saturday 23 September from 7pm

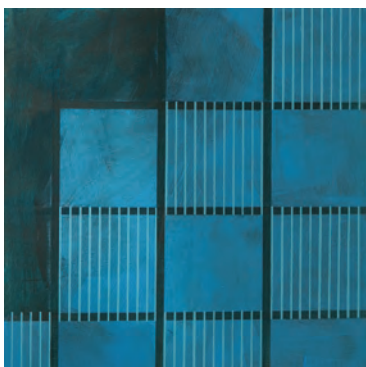
S	S	M	T	W	T	F	S	S	M	T	W	T	F	S	S
23	24	25	26	27	28	29	30	1	X	X	X	X	X	7	8



A MONTHLY CELEBRATION OF PEOPLE, PLACE AND PURVEYOR



www.sherbornetimes.co.uk



54 LUCY WILLIS, PENNIE ELFICK, JUDY WILLOUGHBY

PAINTING, PRINTS, DRAWING

Pennie Elfick: Abstract paintings and prints

Lucy Willis RWA: Paintings, etchings and pastels

Judy Willoughby: Paintings, prints and wall hangings

Work for sale £20 - £2,000

Private View: Saturday 23 September, 2 - 6pm

YMCA Somerset Coast George Williams Centre, Friarn Avenue, Bridgwater, TA6 3RF

T: 01278 726006 • E: Katherine.Newell@ymca-sc.org • W: www.ymca-sc.org

Directions: Off Broadway turn left into Albert Street and then left into Friarn Avenue and right into the YMCA Car Park.

Opening times: Monday - Friday 10am - 6pm, Saturday 10am - 5pm



S	S	M	T	W	T	F	S	S	M	T	W	T	F	S	S
23	24	25	26	27	28	29	30	1	2	3	4	5	6	7	8



55 CLAYHILL ARTS

INSTALLATION, SITE SPECIFIC, WILLOW, METALWORK

As a new kind of training venue for the creative industries, Clayhill Arts will be offering a preview of their facilities, as well as hosting site specific work by **Fiona Campbell** and **Angela Morley**. The work will be exploring questions about the prospect of site and place, whilst the venue will be exploring the possibilities created by its new home in Somerset.

Workshops with Angela and Fiona will be taking place on Sunday 8 October (see www.clayhillarts.co.uk for further details).

Clayhill Farm, Charlynch Lane, Bridgwater, TA5 2PH

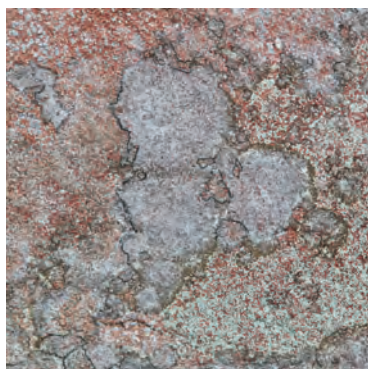
T: 01278 256596 • E: info@clayhillarts.co.uk • W: www.clayhillarts.co.uk

Directions: Leaving Bridgwater follow A39 to Cannington / Minehead. Approaching Cannington / Wembdon roundabout take immediate first left onto Charlynch Lane. Passing Little Clayhill Farm on your left, take the next left to Clayhill Arts.

Opening times: 11am - 6pm



S	S	M	T	W	T	F	S	S	M	T	W	T	F	S	S
23	24	25	26	27	28	29	30	1	2	3	4	5	6	7	8



56 BLACKANDWHITEANDREAD

INSTALLATION, SITE SPECIFIC, PHOTOGRAPHY, PRINTS

Architecture, history, craftsmanship and vision combine in the exterior of Broomfield Hall, whose magnificent Southern Wall forms an illuminated installation for two weeks this autumn. Art works responding to the wall and its composition - both past and future - include photographs, limited edition prints, screen prints and engravings, on display and for sale alongside a huge selection of architectural books and drawings.

Private view: Friday 22 September, 6 - 8pm. Late open evenings, including floodlit presentations: Friday 29 September and Friday 6 October, 6 - 9pm. Prices from £5 (catalogues) up to £400+ (limited editions).

1 Broomfield Hall, Enmore, Bridgwater, TA5 2DZ

T: 07748 353919 • E: jlw@glastonburyfestivals.co.uk • W: www.glastonburyfestivals.co.uk

Directions: Please follow directional signs from Enmore School. Entrance to Broomfield Hall is 500 yards down a narrow unmarked public road which begins directly opposite the school gates.



Opening times: 11am - 6pm



S	S	M	T	W	T	F	S	S	M	T	W	T	F	S	S
23	24	25	26	27	28	29	30	1	2	3	4	5	6	7	8



57 ART AT THE OLD POST OFFICE

PAINTING, PRINTS, DRAWING, SCULPTURE, STONECARVING

Emma Smith: Screen prints combining pattern with Japanese woodblock influence, also hand-cut collages and designs using Chiyogami papers. **Peter Hibbard:** Sculpted for Henry Moore in the 1960s. Peter's beautiful stone sculptures are widely collected. **Rossanne Lee-Bertram:** Abstracted etchings and prints; shape, form and colour inspired by objects, nature and landscape.

The Old Post Office, 70 Thurloxton, Taunton, TA2 8RH

T: 01823 410684 • E: emma@melonseeddesign.com

Directions: From A38 follow signs to Thurloxton. The Old Post Office is 100 yards past the church on the right.

Opening times: 11am - 6pm

S	S	M	T	W	T	F	S	S	M	T	W	T	F	S	S
23	24	25	26	27	28	29	30	1	2	3	4	5	6	7	8



**NORTH DEVON
OPEN STUDIOS 2017**

15 SEPTEMBER - 1 OCTOBER

arttrek.co.uk

at ART TREK
NORTH DEVON
OPEN STUDIOS

A place to remember (detail) Edward Crumpton

58 JANET LAWRENCE, JAKE SIMPSON, WILLIAM LAWRENCE

MIXED MEDIA, PAINTING, PRINTS, DRAWING, ARTS AND DISABILITY

Janet Lawrence: Local landscapes and animals in mixed media along with watercolours. Performance poet **Jake Simpson** uses the voices of disaffected children, often rejected by the system, bringing awareness to a wider audience. Please contact for performance times and children's poetry workshop booking. www.jakeart.co.uk. **William Lawrence:** Drawings of people and wildlife.

Crowcombe Church House, Crowcombe, TA4 4AD

T: 01984 639362 • E: thegreywolves@btinternet.com • W: www.thegreywolves.co.uk

Directions: Follow signs for Crowcombe Village on A358. Crowcombe Churchhouse is opposite the church, and the car park is behind it.

Opening times: 11am - 5.30pm

S	S	M	T	W	T	F	S	S	M	T	W	T	F	S	S
23	24	25	26	27	28	29	30	1	2	3	4	5	6	7	8



59 ALISON JACOBS

PAINTING, PRINTS, DRAWING, INSTALLATION, SITE SPECIFIC, NEW MEDIA

Mining the National Centre for Folk Arts for inspiration, Alison will be making work with the support of the Halsway Manor Society. She will be artist in residence in a makeshift studio in a thatched Edwardian sunhouse.

Visit this fascinating and beautiful venue on the Quantock Hills and discover the curious art Alison creates.

Halsway Manor, Halsway Lane, near Crowcombe, TA4 4BD

T: 07833 750428 • E: info@alisonjacobs.com • W: www.alisonjacobs.com

Directions: From Taunton take A358 12.5 miles (25 minutes) towards Minehead, Halsway is signposted right after Crowcombe. Or from Williton (A39) take A358 Taunton for approximately 3.5 miles (6 minutes) Halsway is signposted left after Bicknoller.

Opening times: 11am - 6pm



S	S	M	T	W	T	F	S	S	M	T	W	T	F	S	S
23	24	25	26	27	28	29	30	1	2	3	4	5	6	7	8

60 FIONA MEEK AND BEN MEEK

PAINTING, PHOTOGRAPHY

Fiona Meek's work is inspired by the draw we all feel to be at the sea's edge. 'My paintings are as much about atmosphere as the ever-changing beauty of the sea and sky and where the two meet'. Mostly seascapes, some birds and flower paintings in oil. Ben Meek is an award winning young photographer featured recently in 'Somerset Life' magazine. Inspired by local and distant landscapes, wildlife and people, he has captured scenes from the familiar rolling hills of Somerset to regions of Spain, Italy and Nepal.

Orchard Cottage, 11 Lower Vellow, Williton, Taunton, TA4 4LS

T: 01984 656992 • E: fi@fionameek.com • W: www.fionameek.com

Directions: From Taunton take A358 towards Minehead. After 14 miles take Vellow and Stogumber turn. Go 1 mile to Vellow and take right turn signed Sampford Brett. The venue is the 2nd house on left with parking on left.

Opening times: 11am - 6pm



S	S	M	T	W	T	F	S	S	M	T	W	T	F	S	S
23	24	25	26	27	28	29	30	1	2	3	4	5	6	7	8

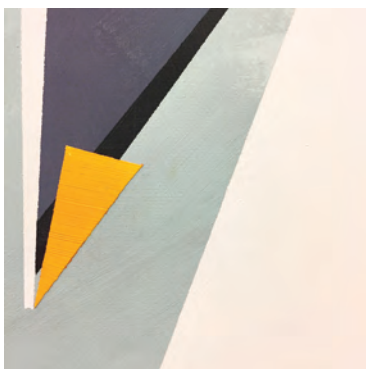
10parishesfestival.org.uk
info@10parishesfestival.org.uk
 01984 624564

10parishesfestival

a celebration of visual and performing arts

Artistic and cultural excellence with community involvement at every level!
 Across the 10 Parishes, centred on Wiveliscombe in West Somerset,
 almost 100 artists, craftspeople and performers will be
 exhibiting this September. Visit the 10 Parishes
 and enjoy everything that is on offer!

9th - 17th September 2017



61 CONTAINS ART STUDIOS: EXPLORE - INSPECT - EXCAVATE

PAINTING, PRINTS, DRAWING, CERAMICS, JEWELLERY

Intrigued by the idea of prospecting our earth in the search of new discoveries and a greater understanding of the world around us, within this project, Cecilia Leete, Georgina Towler, Sue Lowe and Valerie Berry will 'prospect' their own artistic practices.

Expanding on their mutual interest in the coastline, geology and rock formations they will explore, inspect and excavate their surroundings through painting, printmaking, ceramics and jewellery.

Contains Art, East Quay, Watchet, TA23 0AQ

T: 07807 839961 • E: towlergeorgina@hotmail.co.uk

W: www.containsart.co.uk

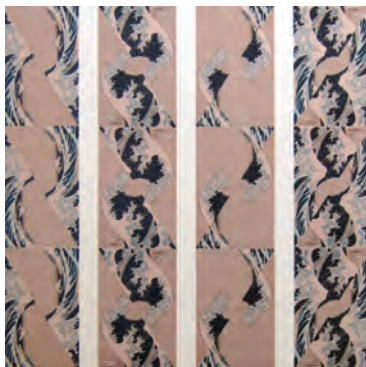
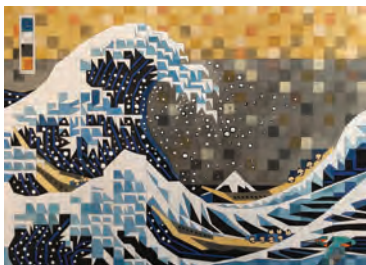
Directions: Contains Art occupies shipping containers overlooking Watchet Harbour. Parking, buses and trains (WSR) in Harbour Road.

Opening times: 11am - 6pm



♿ Not good **P** Offsite  

S	S	M	T	W	T	F	S	S	M	T	W	T	F	S	S
23	24	25	26	27	28	29	30	1	2	3	4	5	6	7	8



62 NEW WAVE

FILM, NEW MEDIA, PAINTING, PRINTS, DRAWING, MIXED MEDIA

Linking Hokusai's iconic 'Great Wave' with a new wave of arts students currently making their mark in the creative fields - Toni Davey curates a reunion of alumni from West Somerset Community College [formerly under her tuition together with Andrew Davey] - for an exhibition of works in response to the classic Ukiyo-e woodcut.

This exhibition will highlight the threat to the creative subjects in education both nationally and locally meaning that future creatives are having this lifeline of expression removed.

Contains Art, East Quay, Watchet, TA23 0AQ

T: 07583 368072 • E: jon@containsart.co.uk • W: www.containsart.co.uk

Directions: The Contains Art Gallery occupies a shipping container overlooking Watchet Harbour. Parking, buses and trains (WSR) in Harbour Road.

Opening times: 11am - 6pm

♿ Good **P** Onsite  

S	S	M	T	W	T	F	S	S	M	T	W	T	F	S	S
23	24	25	26	27	28	29	30	1	2	3	4	5	6	7	8

SUPPLEMENT



SOMERSET ART WEEKS

prospect

PROGRAMME

23 SEPTEMBER - 8 OCTOBER

Exciting plans followed the successful bid for Arts Council Lottery funding for the 'Prospect' commissioning programme for 2017. Featuring special projects, exhibitions, workshops and bursaries, it includes new art commissions by established and emerging artists, with a host of respected curators, all in special places unique to Somerset. Celebrated alongside these is an innovative programme of vibrant events over three weekends on the theme of Contemporary Craft, Film and Family.

Commissioned by Somerset Art Works with a wide range of partners, without whom and their generous support, none of this would be possible.

Carol Carey
Creative Director, Somerset Art Works

SATW
somerset
art works

prospect: EVENTS DIARY

Please also see the Craft Weekend, Film Festival Weekend and Family Friendly Weekend pages for other events

ROCKAWAY

Friday 22 - Sunday 24 September: An extravaganza to showcase live music, live art and Vegan food from our resident artists and selected friends from the festival and street art community. VENUE 1: Rockaway Park, Eastcourt Road, TEMPLE CLOUD, Bristol BS39 5BU. Friday from 7pm, Saturday from 2pm, Sunday from 2pm. Free, drop in. rockawaypark.co.uk / mark@rockawaypark.co.uk.

RED BRICK BUILDING

Friday 22 September, Saturday 30 September, Friday 6 October: Hosting events including SAW private view party on Friday 22 September, *Plop!* - children's theatre on Saturday 30 September and Bocabar Jazz on Fri 6 October. Award winning bar and kitchen, open daily for breakfast, lunch, dinner. VENUE 23: Morland Road, GLASTONBURY, BA6 9FT. 01458 899564 / www.bocabar.co.uk.

GLASSMAKING WITH SIDDY LANGLEY

Saturday 23 September - Sunday 8 October: Weekday workshops: paperweight making, tile making, sand casting, mosaics, bead making, etc. Have 'hands-on' experience of different glassmaking techniques. Free weekend demonstrations. VENUE 73: Longmeadows, PLYMTREE, Devon EX15 2JW. Times various, cost £25 per workshop. Booking required: 01884 277426 / mail@siddy.com www.siddy.com.

LYTES CARY WEEKEND SHOWCASE

Saturday 23 September: *Bundles of Willow* talk by Annemarie O'Sullivan: Annemarie will talk about her practice, from small domestic baskets to larger architectural installations, 11am. *Paper Blooms: The Chinese Art of Paper Relief* with Jessica Palmer: Fun making beautiful 3D flowers with renowned illustrator Jessica Palmer. Add your piece to a shared floral frame at Lytes Cary over Art Weeks. 2 - 4pm. **Sunday 24 September:** *Bundle Dyeing and Foraging Walk* with Flora Arbuthnott: Learn how to dye fabric with locally grown and foraged flowers, leaves, roots, berries, and barks, and how to create beautiful patterns and prints on fabric. 10.30am - 12.30pm. VENUE 104: Lytes Cary, near SOMERTON, TA11 7HU. Talk £10, workshops £25 per person. Book via SAW: 01458 253800 / info@somersetartworks.org.uk. Full payment on booking (refunds available if place filled from waiting list).

DOVE STUDIOS: DEMONSTRATIONS AND TALKS

Saturday 23 September: *From Fleece to Fabric* with Sandie Roche, 2 - 3pm. Pottery throwing demonstrations with Mike Dodd, 3 - 4pm. **Sunday 24 September:** Have a go at screenprinting with Diana Milstein and Faye Suzannah, 2 - 3pm. A talk about the basics of building a tree house by Jim Blackburn, 3 - 4pm. VENUE 21: Dove Studios, Barton Road, BUTLEIGH, BA6 8TL. Free, drop in. bronbradshaw@yahoo.com.

EXCLUSIVE TOURS OF ST CUTHBERTS MILL

Monday 25, Wednesday 27 and Thursday 28 September + Monday 2, Wednesday 4 and Thursday 5 October: Exclusive tours around this historic papermill to see how exquisite artists papers are made. This is an 18th century working mill with uneven ground, steep steps and slippery surfaces. VENUE 35: St Cuthberts Mill, Haybridge, WELLS, BA5 1AG. 10am, 11am, 12pm, 1pm, 2pm, 3pm. Free, strictly a pre-booked ticketed event: events@stcuthbertsmill.com

FILM SCREENING: ALL THE PEOPLE

Thursday 28, Friday 29 September, Sunday 2 October: Film by Ben Rivers, Luke Fowler, Sarah Miles and Adam Chodzko. Screenings from 7pm. For full details see the Film Weekend page.

ARTIST TALKS AT COCKHILL STUDIOS

Friday 29 September: Lecture by Will Vaughan: *Bites and Scratches - A Rough Guide to Etching*, 6pm. **Friday 6 October:** Lecture by Biddy Peppin: *Observations - Thinking about Painting*, 6pm. VENUE 107: Lower Cockhill Farm, Barrow Road, Cockhill, CASTLE CARY, BA7 7NZ. FREE. halliam@hotmail.com.

HAUSER & WIRTH SOMERSET: CURATOR'S TOUR

Saturday 30 September: A special guided tour of new exhibitions by Rita Ackerman, Hans Josephsohn and Peter Maerkli, with a welcome drink on arrival at the Roth Bar & Grill. Durslade Farm, Dropping Lane, BRUTON, BA10 0NL. 5pm. Booking required with SAW: 01458 253800 / info@somersetartworks.org.uk.

PROSPECTUS ARTIST TALK: FLORIAN ROITHMAYER

Saturday 30 September: The Refectory, The Old Church School, Butts Hill, Frome, BA11 1HR. 6 - 7.45pm. Booking: 01458 253800 / prospectus.eventbrite.com. For full details see the Prospectus page.

FILM SCREENING AT IGNITE

Saturday 30 September: A special screening of International Art Films from Oberhausen Film Festival 2016. VENUE 53: The Engine Room, Somerset Film, 52 High Street, BRIDGWATER, TA6 3BL. 7pm. Booking essential: 01278 433187 / info@somersetfilm.com.

ARTIST TALK: DAVID WARD

Sunday 1 October: David will be talking about his immersive sound installation at Kilver Court, *In the Air*. VENUE 14: Kilver Court Garden, Kilver Street, SHEPTON MALLET, BA4 5NF. 2 - 4pm. Ticketed event, booking via SAW: info@somersetartworks.org.uk.

STREET PHOTOGRAPHY WITH KIT SADGROVE

Sunday 1 October: Join a street photography walk coinciding with the Frome Independent Market. Smartphones welcome. Awards for the best photos. VENUE 6: The Archangel, 1 King Street, FROME, BA11 1BH. 11am. Free, booking required: KitSadgrove@gmail.com.

NEW WAVE: ARTISTS TALK

Tuesday 3 October: *All Schools should be Art Schools* (Bob and Roberta Smith). Talk with various contributors to the New Wave show. VENUE 62: Contains Art, East Quay, WATCHET, TA23 0AQ. 7.30pm. Free, more information: www.containsart.co.uk / jon@containsart.co.uk.

WILLOW WEAVING WITH ANGELA MORLEY

Wednesday 4 October: An experimental workshop exploring natural materials and forms. Weave, plait, bind or stitch grasses, sedge leaves, twigs, and willow to create bowl-like, leaf-like and abstract forms. VENUE 3: Round Tower Gallery, Black Swan Arts, FROME, BA11 1BB. 1 - 3pm. £30 pp including materials and refreshments. Booking required: angela@wildgardens.co.uk.

DURATIONAL PERFORMANCE: ISOBEL ADDERLEY

Saturday 7 October: See venue entry for details. VENUE 99: Eastville Project Space, 2/F, Thorn House, Eastville, YEOVIL, BA21 4JD. 5 - 7pm. Booking required: info@eastvilleproject.org.uk.



David Ward 'In the Air'

prospect

A LANDSCAPE OF OBJECTS

This project consists of a series of site-specific commissions, residencies and curated shows, in a range of media, taking a different approach to the theme of 'A Landscape of Objects' setting the work within different cultivated landscapes of Somerset culminating in a vibrant programme of work and activities for Art Weeks 2017.

It aims to encourage research by artists into the spirit of place, local identity and rural context in their making.

Venue 14 at Kilver Court Gardens

In The Air is an immersive sound installation created by artist David Ward made specifically for the unique garden at Kilver Court. Various sound recordings are replayed underneath the arches of the great Charlton Viaduct that runs dramatically through these beautiful gardens.

Venue 83 at Hestercombe Gardens

A new work by Jennie Savage commissioned by Curator Tim Martin. *The 14th Seat* will be a temporary building where the 'prospect' of future events will occur. *The Fourteenth Seat* is a proposition by artist

Jennie Savage that responds to Hestercombe's thirteen known buildings or 'seats' in the restored C18th Landscape Garden.

Venue 93 at Forde Abbey

Inspired by the landscape at Forde Abbey, a sculpture trail around the house and gardens incorporating work by artists, Annemarie O'Sullivan and Tom McWalter, Eleanor Lakelin, Vezzini & Chen, Kaori Tatebayashi and Katie Spragg, curated by Yvonna Demczynska of FLOW Gallery.

Venue 111 at The Gallery, Castle Cary

en Plein air painting made in the landscape in Somerset by four Russian artists who visited in August 2017. SAW invited four of the most prominent painters in that tradition to Somerset to spend time painting with artists in the region. This is partly educational and partly a coming together of cultures.

Venue 114 at Lytes Cary

Building on the introduction of high quality crafts via *Herbarium*, a New Contemporary Craft weekend showcase takes place 23 and 24 September with Somerset makers and guests including FLOW Gallery. Featuring new temporary installations by Lucy Large and Jessica Palmer for Art Weeks.



Supported using public funding by
**ARTS COUNCIL
ENGLAND**



KILVER COURT DESIGNER VILLAGE
DESIGNER SHOPPING • RESTAURANTS • GARDENS & GALLERY





Annemarie O'Sullivan

prospect: WEEKEND 1

CONTEMPORARY CRAFT

Lytes Cary, 23 and 24 September, 11am - 4pm

Join us at the splendid arts and craft setting of Lytes Cary for an outstanding showcase of contemporary craft inspired by nature.

Enjoy live demonstrations and talks, get hands-on in taster workshops and browse pop-up stalls.

See skilled makers demonstrate their crafts. Chat to makers about their techniques, buy their work or simply enjoy watching them in action.

Browse and buy unique pieces as once again, we've teamed up with **FLOW London**, curator of Herbarium. Introducing nature books from **Number Seven**, Dulverton, and featuring work by SAW makers and guests including Liz Clay, Jan Ollis, Louise Cottey, Penny Wheeler, Sue Gregor and Sky Siouki.

See a new inspiring installation by Lucy Large: Her wire-mesh work undoubtedly responds to the natural world and the rural environment of West Somerset within which she lives and works. There is also, however, a strong sense of theatre about the pieces - narrative threads are left dangling and a hint of storytelling might be found.

Talks by renowned makers Annemarie O'Sullivan and Liz Clay

Have a go and try out a new skill in a hands-on workshop with textile artist **Flora Arbuthnott** and paper artist **Jessica Palmer**, who will also leave an installation for the Art Weeks.

Workshops and talk are bookable via the SAW office: info@somersetworks.org.uk / 01458 253800

Enjoy the wealth of creative making talent during Somerset Art Weeks at

Venue 3: EPHEMERAL & ETERNAL, Black Swan Arts, Frome

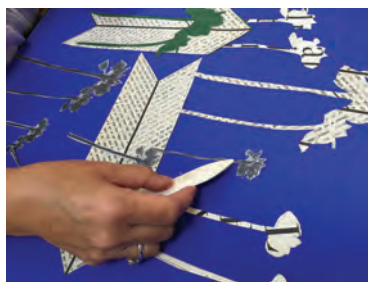
Venue 25: GATHER-ING, The Rural Life Muesum, Glastonbury

Venue 80: CHANGE, CICCIC, Taunton

Venue 93: A LANDSCAPE OF OBJECTS, Forde Abbey

Venue 102: OBJECTSCAPE, ACE Arts, Somerton

Venue 113: BEES: THE INTERCONNECTEDNESS OF ALL THINGS, Bruton School for Girls





The Pickers (2009) Courtesy of Adam Chodzko and LUX, London

prospect: WEEKEND 2

ALL THE PEOPLE

A programme of films by artists Ben Rivers, Luke Fowler, Sarah Miles and Adam Chodzko, curated by Josephine Lanyon

In this absorbing series of works, we find people casting their futures by re-imagining Britain's rural past. The title is drawn from the county's fiercely independent 1911 motto 'all the people of Somerset'.

We start our journey with Ben Rivers, who was born in Somerset. His film *Origin of the Species* (2008) focusses on one man's life spent pondering Charles Darwin, shot on an acre of land in Scotland. Luke Fowler's *Depositions* (2014) explores the role of the Highland traveller in Gaelic history and culture. Sarah Miles returned to Bridport and Portland in West Dorset where she grew up to produce *Magnificent Ray* (2000). Adam Chodzko's *The Pickers*, (2009) is made with a group of Romanian migrant workers at a strawberry farm in Kent. In each work the film-maker is a quiet presence alongside the individuals and places. The films are a fusion of subject and landscape, fact and fiction, live action and archival material. The programme, which will tour during Somerset Art Weeks, is introduced by curator Josephine Lanyon and followed by a Q & A session with one of the artists.

Thursday 28 September - Q & A with Ben Rivers

Roxy Cinema, 36 High Street, Axbridge, BS26 2AF. 7.30 - 9.30pm (doors open at 7pm). £5. Box Office 07725 051523 / www.axbridgeroxy.org.uk.

Friday 29 September - Q & A with Adam Chodzko

Strode Theatre, Church Road, Street, Somerset, BA16 OAB. 7.30 - 9.30pm. £8 / £7 concessions. Box office 01458 442846 / www.strodetheatre.org.uk.

Sunday 1 October - Q & A with Sarah Miles

Cinema Obscura, Wiveliscombe Primary School New Hall, North Street, Wiveliscombe, Somerset, TA4 2LA. 7.30 - 9.30pm (doors open at 7pm). £5. Box Office 01984 624657 / cinemaobscura@newshadygrove.co.uk, or book online allthepeople.eventbrite.co.uk

Commissioned by Somerset Art Works, working in partnership with Somerset Film and funded by Arts Council England

Also during the Art Weeks Festival

Ignite: A special screening of International Art Films from Oberhausen Film Festival 2016

Saturday 30 September, 7pm, The Engine Room, Somerset Film (Venue 53)



Magnificent Ray (2000)

Courtesy of Sarah Miles and LUX, London



Origin of the Species (2008)

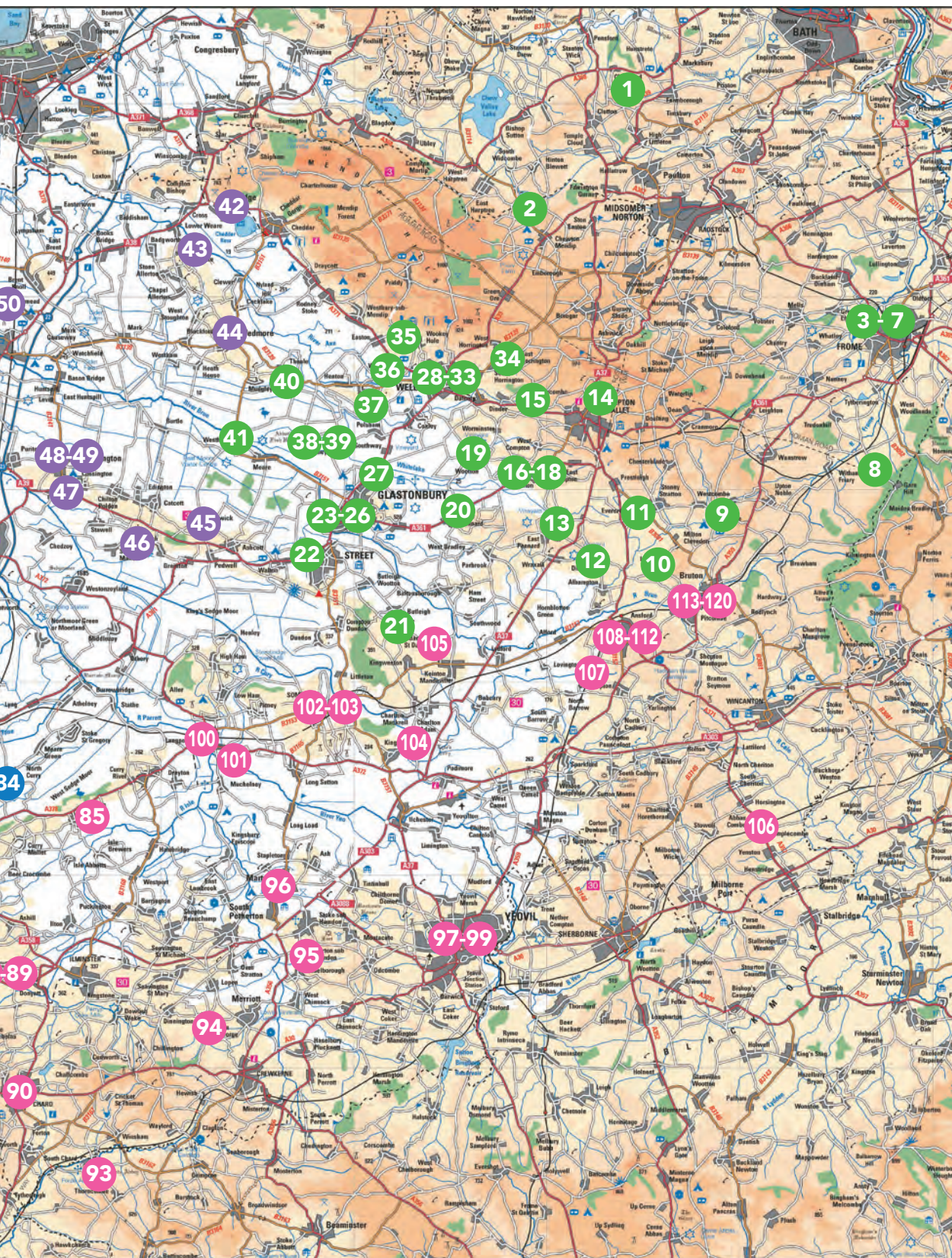
Courtesy of Ben Rivers and LUX, London



Depositions (2014)

Courtesy of Luke Fowler and LUX, London







prospect: WEEKEND 3

FAMILY FRIENDLY EVENTS

The final weekend of Somerset Art Weeks Festival extends a special welcome to families, with venues across the county offering workshops, demonstrations, have-a-go activities and special events.

Latest updates on the SAW website:
somerseartworks.org.uk/family



SAW wants to increase arts provision and highlight opportunities for families of all shapes and sizes in Somerset. Creative engagement from a young age builds support for arts and culture in the future, it also brings generations together - things to do together, to create together and to remember together.



We are linking into national initiatives
Family Arts Festival and **Big Draw**
www.thebigdraw.org
www.familyartsfestival.com



**Get Creative
 Family Arts Festival**



Parents / carers must stay and supervise children / young people at all times during activities.

Information is provided by the venues participating and we advise you to check with the event organiser before travelling. SAW cannot accept liability for any loss, damage or injury connected to these events.

SAW project ECHO-MAKER ANIMATION INSTALLATION 7 and 8 October

A 'magic lantern' film presentation by Sean Harris - inspired by the Somerset Cranes and the wetland landscape of the Levels. The Romano-British Dining Room, Avalon Marshes Centre, Shapwick Road, WESTHAY, BA6 9TT. Every hour on the hour from 11am to 4pm inclusive. Free. Drop in - but some screenings may fill up so come for the morning / afternoon and go for a walk, use the cafe, browse the gallery... info@somerseartworks.org.uk / cranesandcommunities.wordpress.com

SAW project CLAY WORKSHOP Saturday 7 October

A workshop for families at Forde Abbey inspired by the beauty of the gardens, award-winning artist Katie Spragg will be hosting a creative hands-on workshop with clay. VENUE 93: Forde Abbey, CHARD, TA20 4LU. 10am - 12pm. Entry fees apply at Forde Abbey, see www.fordeabbey.co.uk. Workshop free. Drop in. 01460 221290 / info@fordeabbey.co.uk.

SAW project MAKING IN THE MUSEUM Saturday 7 October

Join artist Caitlin Heffernan for a textile inspired making session using a variety of materials inspired by her installation as part of the Muse project. VENUE 90: Chard Museum, Godworthy House, High Street, CHARD, TA20 1QB. 11am - 1pm. Free entry today for workshops. Drop in. 01460 65091 / musemakers.wordpress.com.

SCW DRAWING THE WHOLE PICTURE

project Saturday 7 October

Artist Andrea Oke will encourage families to work together to create a large-scale collaborative artwork that illustrates a story created during the session. Using a series of prompts and games Andrea will guide the group to discover their inner storyteller. VENUE 82: The Brewhouse, Coal Orchard, TAUNTON, TA1 1JL. 2 - 4 pm. Free. Drop in. 01823 283244.

SCW SEASONAL SCULPTURES: FUNKY FUNGI

project Saturday 7 October

Have fun learning about and making clay fungi, mushrooms and toadstools with Water-Meadow-Wood artist Elizabeth Jardine. Meet by Ninesprings Café, Yeovil Country Park, YEOVIL, BA20 1QZ. 12.30 - 3pm. Free. Drop in. info@somersetartworks.org.uk / watermeadowwood.wordpress.com.

SCW MAKING IN THE MUSEUM

project Sunday 8 October

Join artist Dorcas Casey for a family sculpture activity inspired by your favourite things in the Bruton Museum Collection. VENUE 120: Bruton Museum, 26 High Street, BRUTON, BA10 0AA. 1 - 3pm. Free. Drop in. 01749 812294 / jackdawbrooks@googlemail.com / musemakers.wordpress.com.

SCW A JOURNEY THROUGH THE HISTORY OF WRITING

project Sunday 8 October

Hear the stories and try out some ancient methods of writing, taking a whistle stop tour from Roman times to the Victorians. VENUE 42: Axbridge & District Museum, King John's Hunting lodge, The Square, AXBRIDGE, BS26 2AP. 1 - 4pm. Free entry today for workshops. Drop in. andreaoke@btinternet.com / 07989 387779 / musemakers.wordpress.com.

DESIGN A TREEHOUSE

7 and 8 October

Design a treehouse for the Dove's Big Book of Treehouses. All drawing materials provided. Bring a picnic, weather permitting. VENUE 21: Dove Studios, Barton Road, BUTLEIGH, BA6 8TL. 11am - 4pm. Free. Drop in. bronbradshaw@yahoo.com.

CREATIVE ACTIVITY DAYS FOR FAMILIES

7 and 8 October

Come and explore the temporary artworks and installations. Guided walks celebrate the unique farm buildings. All welcome. VENUE 92: Cotley Farm, Cotley, CHARD. Walks and talks start at 11.30am and 2pm and run for an hour on each day. Free. Drop in, groups over 5 please ring in advance. 07976 118650 / 07967 989839.

UNEARTHED: DRAWING AT DAWE'S TWINWORKS

7 and 8 October

A series of self guided activities for families produced to coincide with the launch of Unearthed: Drawings from Dawe's Twineworks by Simon Lee Dicker. Dawe's Twineworks, 15 High Street, WEST COKER, Yeovil, BA22 9AP. 10.30am - 4.30pm. Free. Drop in. 01935 862938.

PROSPECTS OF PRINTING WITH JONATHAN BLACKMORE

7 and 8 October

'Have-a-go' at printing on St Cuthbert's paper - a Somerset scene, on Somerset paper with a Somerset artist! VENUE 29: Somerset Guild of Craftsmen, 23a Broad Street, Wells, BA5 2DJ. 10am - 3pm. Free. Drop in. gallery@somersetguild.co.uk

STRING ART AND DRAWING SKILLS

7 and 8 October

Saturday 7th: Juliet will help visitors to make their own string art. Sunday 8th: Tina will provide materials and tips on drawing skills. VENUE 43: Hopedene Studio, Hopedene, Sparrowhill Way, Weare. BS26 2LN. 11am - 5pm. Free. Drop in. juliet.armon@btinternet.com / tinajdodd@hotmail.com.

WOOD TURNING DEMONSTRATIONS

7 and 8 October

Wood-turner John Ruffle will demonstrate how to turn wood and give people the opportunity to explore and find out more about woodturning. VENUE 51: 12 Julians Acres, BERROW, TA8 2LZ. Various times throughout the weekend. Free. Drop in. 07954 165655 / john.ruffle01@btinternet.com.

GLASSMAKING

7 and 8 October

VENUE 73: Longmeadows, Weaver Lane, PLYMTREE, near Cullompton, Devon, EX15 2JW. 10am - 7pm. Glassblowing demonstrations free / workshops (glass tiles, jewellery or castings) £12. Drop in. 01884 277426 / mail@siddy.com.

WATCHET ART TREASURE TRAIL

Saturday 7 October

Clues and puzzles will lead participants on a quest around Watchet, visiting art venues and finding out what artists do. VENUES 61, 62, 63: Contains Art (East Quay) and Anchor Street, WATCHET, TA23 0AQ. 11am - 4pm. Allow at least an hour, all venues within short walking distance. Free - with prizes! No booking, collect info from Contains Art or Watchet Visitor Centre and Boat Museum. 07963 692559 / sue.lowe1523@btinternet.co.uk.

ORGANIC FORMS USING FOUND AND RECLAIMED MATERIALS

Saturday 7 October

Making forms inspired by the natural world and exhibits using reclaimed / found materials. With Fiona Campbell. All ages. Children accompanied. VENUE 3: Round Tower Gallery, Black Swan Arts Centre, 2 Bridge Street, Frome, BA11 1BB. 1 - 3pm. £25 pp including refreshments. Children under 16 half price. Booking advised as places are limited. fionacampbell-art@sky.com / 07515 537224.

LEARN TO BE A GREAT STREET PHOTOGRAPHER

Saturday 7 October

Tips on how to take street photographs. Bring along photos to be critiqued: prizes for the best, including under 18s. VENUE 6: The Archangel, 1 King Street, Frome BA11 1BH. Free. Drop in between 2 and 4pm. KitSadgrove@gmail.com / 07960 422676.

CHILDREN'S POETRY WORKSHOP

Sunday 8 October

Jake Simpson will demonstrate performance poetry, then participants will be encouraged to write and perform their own poems. Age 8 - 16. VENUE 58: Crowcombe Church House, Crowcombe, TA4 4AD. 11am - 1pm. Free. Booking required. 01984 639362.

CLAYHILL ARTS WORKSHOPS

Sunday 8 October

'Willow Weaving Organic Forms' workshop with Angela Morley. 'Found Materials' workshop with Fiona Campbell. VENUE 55: Clayhill Arts, Charlynch Lane, Bridgwater, TA5 2PH. Half day 10am - 12.30pm. Half day 1 - 3.30pm. Full day 10am - 3.30pm. £30 (half day) including materials and refreshments. £60 (full day) including materials, refreshments and light lunch. Booking required. 01278 256596 / 07881400357 / info@clayhillarts.co.uk.



prospect: inspired EDUCATION RESOURCES

Somerset Art Weeks Festival offers a wealth of opportunities for inspiring creativity and learning outside the classroom.

Our online education resources are part of SAW's **inspired** offer, designed to help schools obtain maximum benefit from the event.

The pack includes: advice on visiting venues, organising tours, engaging with artists and workshops, setting homework activities and activity resources. Download from somerseartworks.org.uk/what-we-do/learning

SAW is committed to supporting the development of young people's artistic talent, as well as building relationships between schools and the community. In 2016, Somerset Art Works worked with 14 artists, delivering 71 school workshops linked to SAW Projects and Somerset Art Weeks, engaging a total of 915 students in schools and colleges across the county.

inspired

CREATIVE OPPORTUNITIES FOR CHILDREN AND YOUNG PEOPLE IN EDUCATION IN SOMERSET

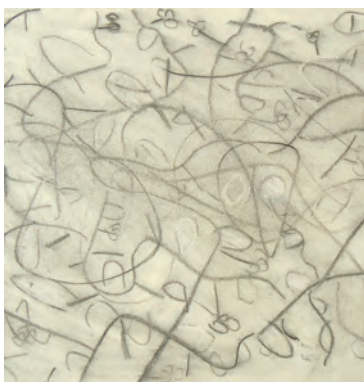
inspired is a consortium of Somerset arts organisations bringing the skills and expertise of arts and media professionals direct to schools, colleges and children's centres across Somerset.

Working together as **inspired**, Somerset Art Works, Somerset Film, SPAEDA and Take Art, are contracted by Somerset County Council to deliver an arts education network. www.inspiredsomerset.org.uk

For details on how your school can get involved with SAW's **inspired** offers see somerseartworks.org.uk/what-we-do/learning

Or contact beccy.swaine@somerseartworks.org.uk / 01458 253800

inspired



Photography: Caroline Duval / Deborah Westmancoat / Jon England

PROSPECTUS

Image courtesy of Anna Best

prospect

PROSPECTUS

PROSPECTUS is a pilot project to create a peripatetic art school in Somerset. Initiated by artist Anna Best and curator Zoe Li, *Prospectus* formed a cohort of artists to spend time and work together, exploring models of learning for themselves and the wider artistic community.

Joined by artists Isobel Adderley, Jon England, Jenny Graham, Fiona Hingston, Sue Palmer and Natalie Parsley, the group experimented and collaborated together; utilising existing art school facilities, sharing thoughts and resources online and creating a learning programme for audiences in Somerset this autumn.

EXHIBITIONS: 'THE CUTS' BY ANNA BEST DURING ART WEEKS FESTIVAL

Anna Best presents a new work that reflects her experience of *Prospectus* - exploring how allegiances develop and individual practices evolve. The exhibition also features audio recordings contributed by the participating artists, a new public resource highlighting issues relevant to their practices and the project.

Huish Episcopi Academy (Venue 101)

University Centre Somerset (Venue 79)

PROSPECTUS LEARNING EVENTS SEPTEMBER - NOVEMBER 2017

A programme of talks, workshops and events initiated, developed and organised by the group of artists participating in *Prospectus*. Combining their knowledge and connections, the group invited artists and professionals from around the UK to create a dynamic programme reflecting their interests in current ideas and approaches to contemporary arts practices. These events present a wide selection of ideas in different contexts relevant to the artists and audiences in Somerset.

Artist Talk: Florian Roithmayr

Saturday 30 September, 6 - 7.45pm, The Refectory, The Old Church School, Butts Hill, FROME, BA11 1HR

Artist Workshop: Florian Roithmayr

Sunday 1 October, 10am - 5pm, The Refectory, The Old Church School, Butts Hill, FROME, BA11 1HR

Artist Talk: 'The Art School and the Culture Shed' by Matthew Cornford

Thursday 12 October, 6 - 8pm, 'The Den' at The Cosy Club, Hunts Court, Corporation Street, TAUNTON, TA1 4AJ

Artist Talk and Workshop: Louise K Wilson and Stephen Felmingham

Saturday 28 October, 10.30am - 4.30pm, Clayhill Arts, Clayhill Farm, Charlynch Lane, BRIDGWATER, TA5 2PH

Public Lecture: 'Journeys of Lactic Abstraction' by Melanie Jackson

Thursday 9 November, 6 - 7.30pm, University Centre Somerset, Wellington Road, TAUNTON, TA1 5AX

Public Lecture: 'The Neurobiology of Beauty and Its Implications' by Professor Semir Zeki

Thursday 23 November, 6 - 7.30pm, University Centre Somerset, Wellington Road, TAUNTON, TA1 5AX

Public Lecture: Artist Talk by Mary Evans

Thursday 7 December, 6 - 7.30pm, University Centre Somerset, Wellington Road, TAUNTON, TA1 5AX

Event details and online booking:
prospectus.eventbrite.com

For further information: 01458 253800 /
prospectus@somersetartworks.org.uk

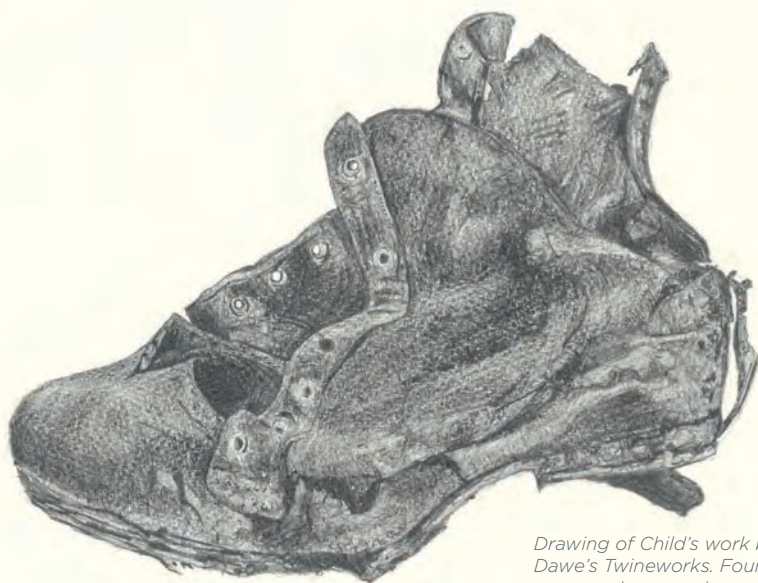
Prospectus is commissioned by Somerset Art Works with support of the Lottery funding from Arts Council England.

prospectus.somersetartworks.org.uk



DAWE'S WORKING VICTORIAN TWINEWORKS FAMILY ACTIVITY WEEKEND AND ARTIST BOOK LAUNCH

Saturday 7 & Sunday 8 October 2017
10.30am - 4.30pm



*Drawing of Child's work boot from
Dawe's Twineworks. Found after 150
years underground.*

Visit Dawe's working Victorian
Twineworks and take part in
FREE activities for families that
have been produced to coincide
with the launch of *Unearthed:
Drawings from Dawe's Twineworks*
by Simon Lee Dicker.

Taking a lead from the physical processes
involved in the production of twine and the
social impact of the twine industry on this
small rural community, the publication brings
together work made during a six month artist
residency, with newly commissioned writing,
and poetry made in response to the Twineworks
by the West Coker Poetry group.

Please visit us at Dawe's Twineworks,
94a High St, West Coker, Yeovil BA22 9AU
or contact Ross on 01935 862938

OSR/
PROJ
ECTS

old mill
accountants and financial planners



SAW
somer
set
art works


COKER ROPE
& SAIL TRUST


LOTTERY FUNDED



63 ECHOES... CURRENTS...

PAINTINGS, SCULPTURE, PRINTS

The Broadcasting Museum, an atmospheric new venue, celebrates all aspects of the broadcasting world and its fascinating history. It has inspired five artists to use various media to explore a range of themes including nostalgia, science, design and communication as well as the echoes and influences of the landscape beyond. Illustrator **Jill Newton**, multimedia artist **Scarlet von Teazel**, sculptor **Martyn Lintern**, painter **Jenny Barron** and printmaker **Jan Martin**.

The Broadcasting Museum, Anchor Street, Watchet, TA23 0AZ

T: 07802 761993 • E: jillnewt@gmail.com • W: www.jillnewton.co.uk

Directions: The Broadcasting Museum is in Anchor Street in Watchet. Take the first turning left off Swain Street, opposite the Railway and Bus station. There are public car parks nearby.

Opening times: 11am - 5pm

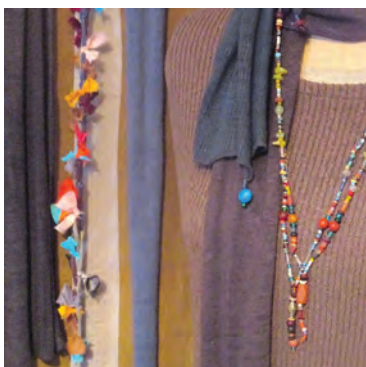
S	S	M	T	W	T	F	S	S	M	T	W	T	F	S	S
23	24	25	26	27	28	29	30	1	2	3	4	5	6	7	8



Partial



Offsite



64 LUMLEY HARRIS HOOD AND WOOD

PAINTINGS, JEWELLERY, TEXTILES, FASHION

A collection of work by Emma, Lone, Jane and David celebrating the Natural World. Watercolour and mixed media paintings from £30.

Prints, cards and a wide selection of decorative goods and gifts.

Drawings, sculptural plants and outdoor art in wood, slate and stone.

Clothes, scarves, bags and patchworks in a rich mix of colour and texture.

Distinctive and delicate silver and gold jewellery from Silverdarling.

Tea and cake for everyone!

2 White Horse Cottages, Washford, Watchet, TA23 0JZ

T: 01984 640700 • E: buddhahoody@gmail.com • W: www.janehoodart.co.uk

Directions: Just off the A39 at Washford (turn at Gingerman Hairdressing), next to The White Horse Inn. Main entrance behind the pub.

Opening times: 11am - 6pm

S	S	M	T	W	T	F	S	S	M	T	W	T	F	S	S
23	24	25	26	27	28	29	30	1	2	3	4	5	6	7	8

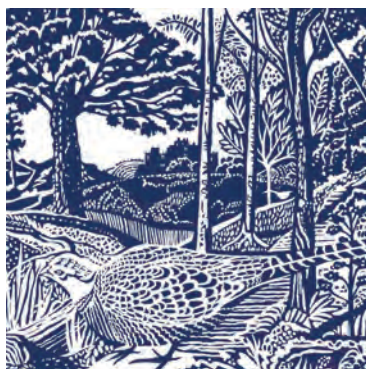


Not good



Offsite





65 SEVEN AT OLD CLEEVE

PAINTING, PRINTS, DRAWING, SCULPTURE, STONECARVING

Peggy Lock: Printmaking, textiles, painting, exploring the world of pattern and shape.

Marilyn Ewens: Paintings, drawings and prints inspired by the Quantocks and the surrounding countryside.

David Milton: Naturalistic abstract stone sculpture inspired by local geology.

Jenny Barron: Imaginative, lucid and detailed watercolour still life.

Nick Cotton: Atmospheric landscapes and seascapes in oils.

Julian Witts: Woodcuts from the wilds of North Devon.

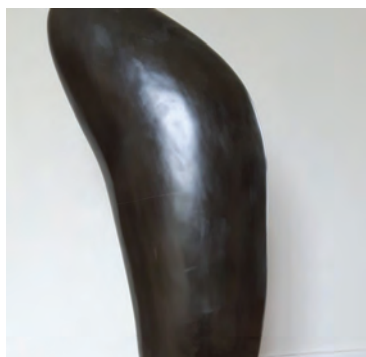
Emma Bradshaw: Vibrant and colourful brushwork and prints

The Church Room, Old Cleeve, near Watchet, TA24 6HW

T: 07706 861395 • E: jennybarron1@outlook.com

Directions: Follow Somerset Artweeks signs off the A39 between Washford and Bilbrook... or... off the B3191 at Blue Anchor. Park in signed carpark or roadside.

Opening times: 11am - 5pm



Good P Offsite

S	S	M	T	W	T	F	S	S	M	T	W	T	F	S	S
23	24	25	26	27	28	29	30	1	2	3	4	5	6	7	8



66 A FUTURE PAST

DRAWING, PAINTING, SCULPTURE

Leo Davey hosts the second Davey family show at his gallery / studio in Minehead. **Leo, Andy, Toni** and **Rose** explore ideas around ruin, loss and renaissance. The four artists though seemingly working in very different ways enjoy the connections realised and the shared perspectives that emerge.

Leo Davey Studio Gallery, 24c Friday Street (Quirke Street), Minehead, TA24 5UE

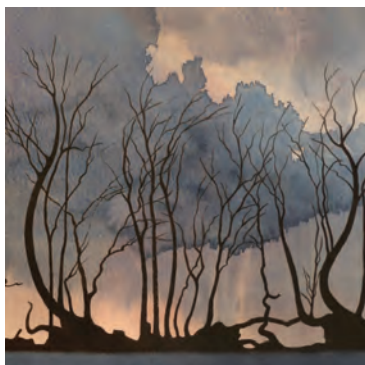
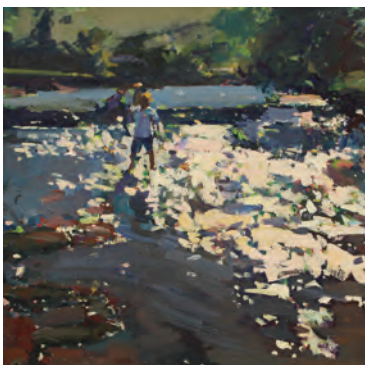
T: 07816 151433 • E: leo@leodavey.com • W: www.leodavey.com

Directions: Leo's Gallery is just off Friday Street on Quirke Street almost opposite The Free Press office, a minute's walk from Minehead's Parade.

Opening times: 11am - 5pm

S	S	M	T	W	T	F	S	S	M	T	W	T	F	S	S
23	24	25	26	27	28	29	30	X	X	3	4	5	6	7	X

Not good P Offsite



67 LANACRE BARN GALLERY

PAINTING, PRINTS, DRAWING, JEWELLERY, PHOTOGRAPHY

Leo Davey, Louis Down, Miranda Johnston, Jessamy Keily, Luke Martineau, Niko Michalopoulos, Jo Minoprio

An exceptionally talented group of well-known and emerging artists featuring in an exciting and visually thrilling show at Jo's gallery in the heart of Exmoor.

A large and varied selection of landscapes, seascapes, animals and birds, in oil, watercolour and ink work, with artists taking inspiration purely from Exmoor and the North Devon / Somerset coast.

Also including a wonderful selection of handcrafted gold and silver jewellery by Niko.

Lanacre Barn Gallery, Lanacre, Withypool, TA24 7SD

T: 01643 831171 • E: jodown@fhsinternet.com • W: www.moorlandart.com

Directions: Landacre Lane, half a mile north of Landacre Bridge. Two miles upstream from Withypool. Yellow SAW signs from all directions.

Opening times: 11am - 6pm

S	S	M	T	W	T	F	S	S	M	T	W	T	F	S	S
23	24	25	26	27	28	29	30	1	2	3	4	5	6	7	8



Partial



Onsite



DEVON
**Artist
Network**
Open Studios

Saturday 9 - Sunday 24 September

A FREE full colour event guide is available from all leading Devon art venues, Tourist Information Centres and libraries. Or call or email us for a copy: 07768 164560 or openstudios@devonartistnetwork.co.uk

www.devonartistnetwork.co.uk

Art at its origin





68 HURSTONE STUDIOS

BOOKS, PAPER, PAINTING, PRINTS, DRAWING, SCULPTURE

Chrys Allen: Musings and meanderings on paper: where walking and drawing have allowed the imagination to wander. www.chrysallen.co.uk / chrys@chrysallen.co.uk.

Louise Baker: Baker's bucolic books / Birds - corvidae and swallows / Boys - tattooed on parade / Boxed - brooches and badges / Beetles and other insects. www.louisebaker.co.uk / louisebaker@gmail.com.

Jane Mowat: Inspired by wood, carving reliefs and woodcuts that explore nature and our relationship with it. janemowat@eclipse.co.uk.

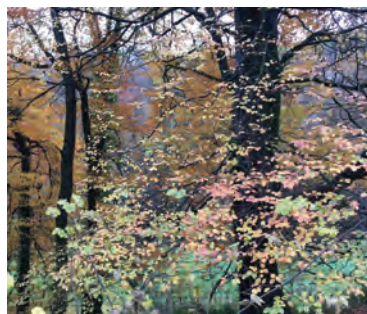
Exciting changes have begun at Hurstone.

Visit this beautiful location, with views, walks, coffee and cakes.

Hurstone Studios, Waterrow, TA4 2AT

T: 07956 510886 • E: chrys@chrysallen.co.uk

Directions: Following the B3227 from Wiveliscombe to Waterrow, turn left at the telephone box before the bridge / Rock Inn. Just 400m up the hill.



Partial Onsite

S	S	M	T	W	T	F	S	S	M	T	W	T	F	S	S
23	24	25	26	27	28	29	30	1	2	3	4	5	6	7	8



69 TRESTON HOLMES CERAMICS

CERAMICS

Much of Treston's work is decorative, with form holding most importance in the making. Some pieces are high fired to stoneware temperatures, glazed with matt or semi matt surfaces or decorated with coloured slips and oxides. Other work is coated with layers of fine liquid clay which is then burnished at the leather hard stage, fired at a much lower temperature and then treated with a smoke firing achieving a leather or wood like surface with carbonization marks.

Kenley, Waterrow, Taunton, TA4 2AT

T: 01984 629684 • E: f.holmes@btinternet.com

Directions: Sat Nav directions using the post code take you to Hurston on the right travelling away from the Rock Inn at Waterrow. Kenley is a short distance further on the left.

Opening times: 11am - 6pm

Partial Onsite

S	S	M	T	W	T	F	S	S	M	T	W	T	F	S	S
23	24	25	26	27	28	29	30	1	2	3	4	5	6	7	8

70 CAROLINE MCMILLAN-DAVEY, TOM WOOD, JUDY JEFFERY

PAINTING, SCULPTURE, TEXTILES

Professional painter Caroline McMillan-Davey, a well established and highly regarded artist capturing the essence and colours of the landscapes we love. Garden sculptor and carver Tom Wood will have delightful and innovative sculptures in the garden, and the Three Js are three generations who love to share their fabric ideas and love of sewing. Prices £5 - £2000.

Willow Acre Barn, Chipley, Langford Budville, TA21 0QY

T: 01823 400677 • E: carolinemcmillan@hotmail.co.uk

W: www.mcmillan-davey.co.uk / www.tomwoodart.co.uk

Directions: Located on the B3187 between Milverton and Wellington (5 mins from either). On the main road, plenty of parking. Only 10 mins from J26 M5.

Opening times: 10am - 5.30pm



Partial Onsite

S	S	M	T	W	T	F	S	S	M	T	W	T	F	S	S
23	24	25	26	27	28	29	30	1	2	3	4	5	6	7	8

71 THE OLD BRICK WORKSHOP

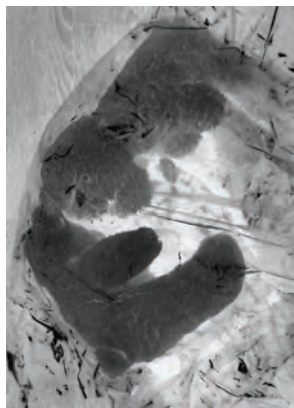
PAINTING, PRINTS, DRAWING, MIXED MEDIA,
PHOTOGRAPHY

The Old Brick Workshop member artists and invited guest artists will be showing a mixed exhibition of their work in our fabulous Gallery and throughout the rest of the building.

Providing a large variety of work with many different styles and media for you to enjoy. Join in with our community art project and treat yourself to tea and cake at our pop up café.

Please visit our website for more details.

Private View: Saturday 7 October, 6 - 8pm.



CREATIVE PATHWAYS: JUDY CROSER

NEW MEDIA

A new film installation captures the artist's experience at the Refugee Aid For Taunton centre. Judy Croser works with porcelain, interested in the tension between its fragility and strength, and more recently in documentary film-making. She received the Creative Pathways Bursary this year to develop new work, experimenting with the possibilities of combining seemingly unrelated materials to explore deeper themes, in particular the way in which ordinary objects and simple gestures can carry powerful emotions.

Unit 1A, Higher Poole, Wellington,
TA21 9HW

T: 07989 465427

E: alison@theoldbrickworkshop.com

W: www.theoldbrickworkshop.com

Directions: From Chelston roundabout follow signs for Poole Industrial Estate and Recycling Centre. The Old Brick Workshop is on your left opposite Formula Cars. Look out for red exhibition signs.

Opening times: 11am - 6pm



Partial



Onsite



**saw
project**

S	S	M	T	W	T	F	S	S	M	T	W	T	F	S	S
23	24	25	26	27	28	29	30	1	2	3	4	5	6	7	8

72 A SPECIAL PLACE

PAINTING, PRINTS, DRAWING, SCULPTURE, TEXTILES

A rich and varied selection of Art and Design works produced by both the Art and the Design faculty members, upper school students, art scholars and invited artists. All of the works have been created in response to the theme of a special place. On show are paintings, sculptures, printmaking, photography, textile and design based works.

**The Alan Rogers Centre, Wellington School, South Street, Wellington,
TA21 8NT**

T: 01823 668800 • E: enquiries@wellington-school.org.uk

W: www.wellington-school.org.uk

Directions: Enter Wellington leaving the M5 at junction 25. Wellington School is on South Street in Wellington. The Alan Rogers Centre is situated past the prep school and the sports complex.

Opening times: Monday - Friday 10am- 4pm, Saturday 9.30am - 12.30pm



Good



Onsite



S	S	M	T	W	T	F	S	S	M	T	W	T	F	S	S
23	24	25	26	27	28	29	30	X	2	3	4	5	6	7	X



73 SIDDY LANGLEY GLASS

GLASS, JEWELLERY

Glassmaking workshops present an opportunity to make glass beads, fused panels, mosaics, sand-castings, tiles or paperweights. Public are welcome to come and watch the classes, see art being made and enjoy the creative process with a celebratory exhibition on 7 / 8 October. Full details of bookable classes on www.siddy.com. Participants' art pieces are theirs to take home.

Longmeadows, Weaver Lane, Plymtree, Near Cullompton, Devon, EX15 2JW

T: 01884 277426 • E: mail@siddy.com • W: www.siddy.com

Directions: From M5 / Junction 28: follow Honiton direction 2 miles. At Postcross: right for one and half miles. Fivecrossways: left for quarter mile. Higherweavercross: right. Longmeadows drive is second left after threequarters mile.

Opening times: 11am - 6pm

S	S	M	T	W	T	F	S	S	M	T	W	T	F	S	S
23	24	25	26	27	28	29	30	1	2	3	4	5	6	7	8



Partial



Onsite





74 MICHAEL TARR AND PHILIP DUDMAN: PROSPECT-US

DRAWING, PAINTING, MIXED MEDIA

Recent paintings and drawings in a wide range of media and sizes by Philip Dudman and Michael Tarr, including regional landscapes together with architectural and geometric compositions. Both artists have exhibited widely in the South West with works in many private collections. Cream tea and meet the artists on Sunday 24 September, 2 - 5pm.

Sweet Briar Cottage, Blagdon Hill, Taunton, TA3 7SL

T: 01823 421026 • E: tarrart@tiscali.co.uk • W: www.michaeltarr.co.uk

Directions: In the middle of Blagdon Hill village, on the main road, 100 yards down the hill from The Lamb and Flag pub.

Opening times: 11am - 6pm

S	S	M	T	W	T	F	S	S	M	T	W	T	F	S	S
23	24	25	26	27	28	29	30	1	2	3	4	5	6	7	8



Partial



Onsite



75 MAL LEE

PAINTING

My work is mainly abstract and impressionistic. I mainly work in acrylics but a recent course at Newlyn School has encouraged me to develop into other media. Colour is important in my work and I continue to take inspiration from different environments as well as a variety of artists. I paint for pleasure and hope this is reflected in my work. My studio has a welcoming and relaxed atmosphere and all the exhibits will be for sale.

Woodcott, Curland, TA3 5SF • T: 01460 234282 • E: lees.curland@gmail.com

Directions: Take B3170 out of Taunton, turn left after motorway bridge, follow signs to Staple Fitzpaine. In Staple Fitzpaine pass Greyhound pub on left - go on for a 1/4 to 1/2 a mile - turn left signed Curland. Woodcott is the second building on the left.

Opening times: 11am - 6pm

S	S	M	T	W	T	F	S	S	M	T	W	T	F	S	S
23	24	25	26	27	28	29	30	1	2	3	4	5	6	7	8



Not good



Onsite



76 RUTH DREW

PAINTING

Walking with dogs in all weathers and seasons makes you see things through their eyes; the joy of running free, of burying your nose into hedgerows, or splashing wildly in streams and mud. My landscapes and detailed studies of the Somerset countryside, worked in acrylics and other mediums, express the wonder of nature.

Shakespeare Glass, Riverside Place, Taunton, TA1 1JJ

T: 01823 333422 • E: ruth@amberdeast.co.uk

Directions: Drive to the centre of Taunton and park at the public car park by the Brewhouse Theatre and Arts Centre. Riverside Place is at the opposite side to the theatre.

Opening times: 10am - 5pm

S	S	M	T	W	T	F	S	S	M	T	W	T	F	S	S
23	24	25	26	27	28	29	30	1	2	3	4	5	6	7	8



Partial



Onsite



DEBORAH WESTMANCOAT contemporary painting
Taunton, Somerset
contact via website to arrange studio visit
www.westmancoat.com



Relaxing stay in historic watermill
Village setting, just outside Wells
WOOKEY ROAD, BURCOTT, WELLS, BA5 1NJ
01749 673118 / www.burcottmill.com

77 FRANCESCA ELLISTON AND UNA LEE

PAINTING, MIXED MEDIA

Fran likes to experiment with ideas in an impressionistic semi-abstract way using media in rich and vibrant colours.

Una is a landscape artist who uses primarily acrylic but also watercolour, inks and oils to embrace new techniques and develop other styles.

Affordable originals, prints and cards from £2.50. Refreshments available.

Disabled toilet.

Comeytrove Hall, Pitts Close, Taunton, TA1 4TY

T: 07496 982555 • E: franelliston@hotmail.com / unalee2004@yahoo.co.uk

W: www.klikpic.com/FameArt / www.unaleeartist.com

Directions: Off College Way from Galmington or Comeytrove, next to local Tesco Express and Doctors' surgery.

Opening times: 10am - 4pm



Good P Onsite

S	S	M	T	W	T	F	S	S	M	T	W	T	F	S	S
23	24	25	26	27	28	29	30	1	2	3	4	5	6	7	8

78 ANNA MORRIS

MIXED MEDIA, PAINTING

Having recently moved to Somerset, this show reflects my response to my new environment. I am interested in the transformative effect of light, on land, sky and sea. These are contemplative mixed media pieces evoking the experience of visual phenomena, of changing light on surfaces and the optical effects created.

King's College, South Road, Taunton, TA1 3LA

T: 01823 328200 • E: reception@kings-taunton.co.uk

W: www.somersetartworks.org.uk/artists/AMorris/

Directions: Please use main school entrance and follow SAW signs to the Art School.

Opening times: 11am - 6pm



S	S	M	T	W	T	F	S	S	M	T	W	T	F	S	S
23	24	25	26	27	28	29	30	1	2	3	4	5	6	7	8

Not good P Onsite



79 ANNA BEST: 'THE CUTS'

NEW MEDIA

Anna Best's new work responds to the experiences of Prospectus - can we make a cohort? a group connected by shared enquiry? How can we enable the process and create something that emerges in the tension between individual and collective? There's also audio from the participating artists, a new public resource highlighting issues relevant to our practices. See page 45.

The Arts House, University Centre Somerset, Wellington Road, Taunton, TA1 5AX

T: 01823 366300 • E: rookem@somerset.ac.uk • W: www.somerset.ac.uk

Directions: The college is a 10 minute walk from the town centre and 20 minutes from the railway station.

Opening times: 10am - 4pm

S	S	M	T	W	T	F	S	S	M	T	W	T	F	S	S
23	24	25	26	27	28	29	30	1	2	3	4	5	6	7	8

Good P Onsite



SAW project



Photo: Beth Evans

Flow is a renowned contemporary craft gallery situated in the heart of Notting Hill, London. The gallery features around six exhibitions a year as well as having a permanent collection, curated by Flow as well as guest curators, and includes ceramic, wooden and metal objects and jewellery.

Flow gallery
1-5 Needham Road
London, W11 2RP
+44 (0) 20 7243 0782
info@flowgallery.co.uk
www.flowgallery.co.uk

80 CHANGE

PAINTING, PHOTOGRAPHY, INSTALLATION

Sian Martin, Lesley Roberts and Pauline Lerry have spent a year responding to the changing nature of the Wildfowl and Wetlands Trust's awe-inspiring environment at Steart Marshes. Observing differences in light, weather, tide and season, and considering time, movement and rhythm, has widened their range of recording, invigorating their practice. Private View: Friday 22 September, 6 - 9pm.

CICCIC - Creative Innovation Centre, Paul Street, Taunton, TA1 3PF

T: 01823 337477 • E: pauline.lerry@btinternet.com • W: www.distantstitch.co.uk

Directions: Follow A38 into Taunton. CICCIC located at Paul Street junction (traffic lights).

50 yds from Taunton's multistorey car park.

Opening times: 9.30am - 5pm

S	S	M	T	W	T	F	S	S	M	T	W	T	F	S	S
23	24	25	26	27	28	29	30	X	2	3	4	5	6	7	X



Good



Offsite



81 HOST

PAINTING, PRINTS, DRAWING, PHOTOGRAPHY

An exhibition of large striking photographs by **Lisa Creagh** is our first here at Host. These photographs come directly from Hamburg and you're invited to view them and this new cultural venue. Host is as striking as Lisa's art - a contemporary industrial conversion of an agricultural barn, now home to the young architects who designed it, and an art restorer who was brave enough to commission it. You are welcome to visit us all.

Host, Heatherton Park Studios, Bradford On Tone, TA4 1EU

T: 01823 641311 • E: timeverett@live.co.uk • W: www.everett-art.co.uk

Directions: Halfway between Wellington and Taunton on the A38, turn off on road opposite 'The World's End' pub heading towards Bradford on Tone. Take next left to the black building.

Opening times: 11am - 6pm

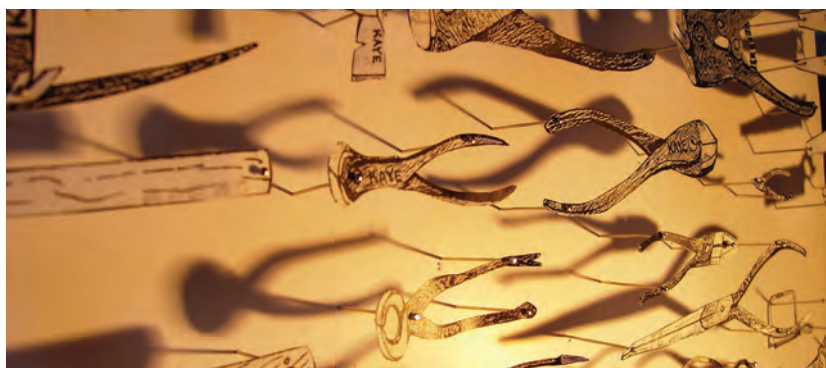
S	S	M	T	W	T	F	S	S	M	T	W	T	F	S	S
23	24	25	26	27	28	29	30	1	2	3	4	5	6	7	8



Partial



Onsite



82 CREATIVE PATHWAYS: TELLING TALES

NEW MEDIA, MIXED MEDIA, TEXTILES, PAINTING, PRINTMAKING

A group exhibition featuring work by over 20 artists participating in Creative Pathways, a Somerset Art Works' professional development programme for emerging and mid-career artists in Somerset. The exhibition offers an insight into the creative endeavours of the artists and reflects the diverse range of contemporary practices and approaches that they adopt in their work. Artists on show demonstrate their eagerness in exploring new ways of working and using contemporary practices across different disciplines, including exploration of materials, text, performances and installations.

The Brewhouse Theatre and Arts Centre, Coal Orchard, Taunton, TA1 1JL

T: 01823 283244 • E: programme@thebrewhouse.net • W: www.thebrewhouse.net

Directions: Adjacent to Coal Orchard car park in Taunton town centre.

Opening times: Monday - Friday 10am - 4pm, Saturday 12noon - 4pm

S	S	M	T	W	T	F	S	S	M	T	W	T	F	S	S
23	X	24	25	26	27	28	29	30	X	2	3	4	5	6	7



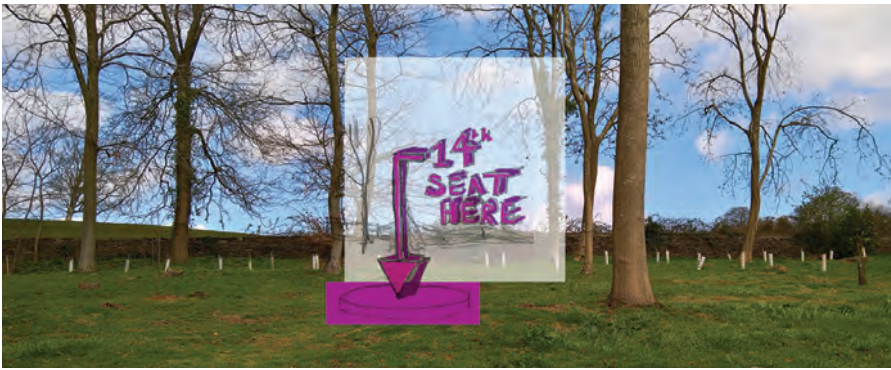
Good



Onsite



SATW
project



83

JENNIE SAVAGE: A LANDSCAPE OF OBJECTS

SCULPTURE, INSTALLATION

Curated by Hestercombe Gallery, 'The Fourteenth Seat' is a proposition by artist Jennie Savage that responds to Hestercombe's thirteen known buildings or 'seats' in the restored C18th Landscape Garden to create a biennial commission at Hestercombe.

The first temporary building, set in Rook Wood will be designed in response to Jennie's research into the history of the gaze with a particular focus on Bampfylde's garden design at Hestercombe and the tension between control and surveillance of the figure in the landscape.

Schools *En Plein Air* painting exhibition can also be viewed at the rear of Hestercombe House
Hestercombe Gardens, Chedden Fitzpaine, Taunton, TA2 8LG

T: 01823 413923 • E: info@hestercombe.com • W: www.hestercombe.com/your-visit/somerset-gallery/

Directions: Follow brown garden signs from Taunton.

Opening times: 11am - 6pm. Garden entry fees apply.

S	S	M	T	W	T	F	S	S	M	T	W	T	F	S	S
23	24	25	26	27	28	29	30	1	2	3	4	5	6	7	8



Partial



Onsite



S&W
project

HESTERCOMBE GALLERY

Contemporary art in reclaimed spaces



15.07.17 - 05.11.17

The Dynamics of Drifting

TIM KNOWLES



Supported using public funding by
**ARTS COUNCIL
 ENGLAND**

hestercombe.com

Tim Knowles, WTWB4 drw#93, Digital Drawing, 2017



84 DEBBIE MUNRO, LOU MUSGRAVE, JOSLYN BENSON

TEXTILES, CERAMICS, MIXED MEDIA

Our work is displayed in a light, airy studio with far reaching views. Free refreshments.

Joslyn Benson: Unique, beautiful and colourful headwear, brooches and corsages. Choose or order for that special occasion. From £12.

Debbie Munro: I'm enchanted by colour and fibre. I dye yarn, design and hand knit fine garments using inspiration taken from the world around me. From £15.

Lou Musgrave: Earthenware ceramics; quirky creatures, colourful characters, bags, beach huts and natural forms. From £5.

Highfield House, Lillesdon, near North Curry, Taunton, TA3 6BN

T: 01823 491503 / 07889 731973

E: thelaceknittery@outlook.com

W: www.thelaceknittery.com

Directions: The venue is on Windmill Hill Road between North Curry and Thornfalcon garage and traffic lights. Easy access from the M5 and the A358.

Opening times: Tuesday - Sunday 11am - 5pm

S	S	M	T	W	T	F	S	S	M	T	W	T	F	S	S
23	24	25	26	27	28	29	30	1	2	3	4	5	6	7	8



[EVOLVER]

THE WESSEX ARTS AND CULTURE GUIDE

Pick up your **FREE** copy every two months at arts centres, galleries, art shops, cafés, libraries and tourist information centres (etc) throughout Bristol, Bath, Dorset, East Devon, Somerset and West Wiltshire

 www.evolver.org.uk  @SimonEvolver  www.facebook.com/EvolverMagazine



85 PAT BOARD AND PETER THOMAS LIVINGWOOD

PAINTINGS, WOOD

Peter Thomas Livingwood is a self taught woodturner / stickmaker, passionate about promoting locally grown wood from sustainable sources. Drawing inspiration from nature and other art forms he produces work that is organic, aesthetic and functional. Prices £30 - £800.

Pat Board paints watercolours inspired by the seasonal landscapes of Somerset, Dorset and Cornwall. From windblown trees and wild places through cultivated fields and orchards to coastal cliffs and harbours. Prices £100 - £500
Cards for sale. Refreshments, tea, coffee and cakes available.

Baptist Church Hall, Butchers Hill, Fivehead, TA3 6PD

T: 07784 146650 • E: patboard@talktalk.net

W: www.peterthomaslivingwood.co.uk

Directions: Exit the A378 opposite the garage at Fivehead descending Butchers Hill for approx. 200m. The Baptist Church Hall is at the bottom of the hill on the right.

Opening times: Sunday and Monday 1 - 6pm, Tuesday - Saturday 10am - 6pm



S	S	M	T	W	T	F	S	S	M	T	W	T	F	S	S
23	24	25	26	27	28	29	30	1	2	3	4	5	6	7	8



86 OVER THE HILL

CERAMICS, WOOD, TEXTILES

June Dobson: A colourful, vibrant display of ceramic pots, jugs, jars, bread crocks and paintings. All inspired by the Blackdown Hills. **Zena Parker:** Young printmaker who grew up in the Blackdowns. Designs, inspired from patterns found in nature, printed using traditional techniques. **Louise Cottey:** Elegant hand woven textiles in natural fibres for the home and to wear. Inspired by the local landscape. **Robert Parker:** Wood, from tree to finished item. Furniture, kitchen ware and turned work. Tea and cakes!

The Village Hall, Bishopswood, Chard, TA20 3RS

T: 01460 234479 • E: robert@dumponthehill.co.uk

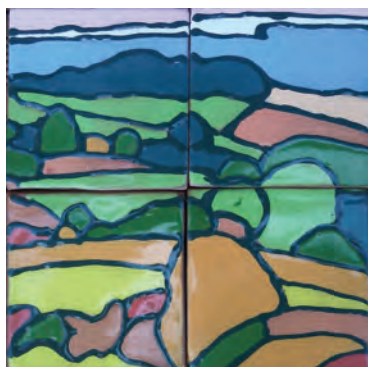
W: www.dumponthehill.co.uk

Directions: A303 half a mile west of Eagle Tavern turning to Bishopswood. In village, past pub, first right to village hall.

Opening times: 11am - 6pm



S	S	M	T	W	T	F	S	S	M	T	W	T	F	S	S
23	24	25	26	27	28	29	30	1	2	3	4	5	6	7	8



87 COLOUR IN THE SUMMER HOUSE

GLASS, PAINTING, POTTERY

Prospect for Colour in the Summer House. Experience **Sally Kent's** exquisite glass from tiny birds to vivid splash-backs, stunning wall and garden pieces. www.sallykentglass.co.uk. Discover **Jackie Spurrier's** charismatic animals on canvas - new paintings, prints and cards to peruse. www.cowsoncanvs.com. Unearth **Christine Buckler's** vibrant rustic pottery, tiles and domestic ware. The Pottery will be open too! christinebuckler@hotmail.com. Enjoy refreshments and good conversation in the legendary Tea Tent.

Glenalmond, Pottery Road, Horton, TA19 9QN

T: 01460 258822 • E: christinebuckler@hotmail.com • W: www.sallykentglass.co.uk

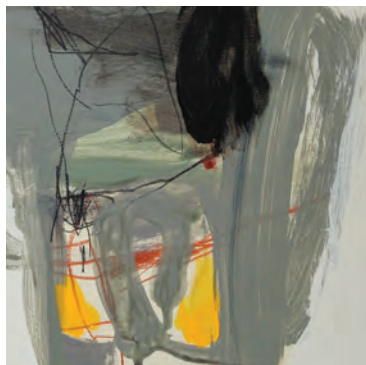
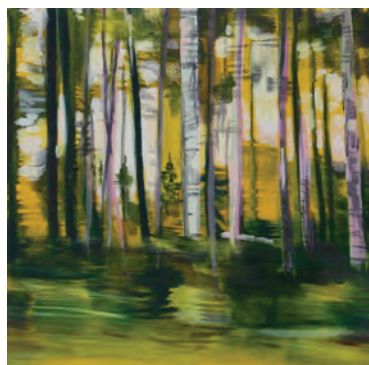
Directions: A303 Ilminster roundabout. Chard Road then Horton Road, after 1 mile reach the 5 Dials Inn. Pottery Road opposite. Glenalmond is a quarter mile on right.

Opening times: 11am - 5pm

S	S	M	T	W	T	F	S	S	M	T	W	T	F	S	S
23	24	25	26	27	28	29	30	1	2	3	4	5	6	7	8



Partial P Offsite



88 CAVALIERO FINN AT MONKS YARD

CERAMICS, PAINTING, SCULPTURE, FURNITURE, TEXTILES

Cavaliero Finn presents *The Essence of Home*, an exhibition organised as part of Somerset Art Weeks Festival. Housed in Horton Manor, a Grade II listed Georgian Manor House that has been empty for over a decade, the contemporary gallery's immersive installation breathes new life into the building and explores the true notion of home. Horton Manor House is currently being lovingly restored by Monks Yard who have recently acquired the property. Cavaliero Finn is hugely excited to be exhibiting in a building of such architectural interest, prior to its renovation. All exhibits are available for sale at affordable prices.

Horton Manor, Horton Cross, Ilminster, TA19 9PY

T: 07941200300 • E: debra@cavalierofinn.com • W: www.cavalierofinn.com

Directions: Situated just off the A358 Taunton Road, six hundred metres from the large roundabout where it intersects with the A303. Look out for Monks Yard brown signs on the roundabout, the exit is signposted towards Chard.

Opening times: Saturday and Sunday 11am - 5pm, Monday - Friday 11am - 3pm



S	S	M	T	W	T	F	S	S	M	T	W	T	F	S	S
23	24	25	26	27	28	29	30	1	2	3	4	5	6	7	8



89 MILLHOUSE

TEXTILES, GLASS, PHOTOGRAPHY, PAINTINGS

This will be our second Art Weeks, our first being in 2015 when we first took on this semi derelict but loveable building. Two years on we are still here and going strong. The dream of a creative hub is now with us. Workshops are plentiful and we have great eating facilities. **Charlotte Martin:** Weaving and Millinery. Workshops. www.fruitbattextiles.co.uk. **Liz Sparkes:** Fused glass. Workshops throughout the year. www.glassification.co.uk. **Justin Orwin:** Photography - digital and traditional. Darkroom and digital workshops. www.orwinstudio.com. **Kevin O'Brien:** Contemporary abstract paintings. www.wesca.co.uk. **Grace Green:** Vibrant paintings. www.gracegreenartist.co.uk.

Unit 1, Rose Mills Industrial Estate, Hort Bridge, Ilminster, TA19 9PS

T: 01460 52866 • E: orwinstudio@gmail.com • W: www.millhouse-arts.co.uk

Directions: Head to the Southfields roundabout just outside Ilminster on the A358 (Taunton) / A303 / Yeovil / Honiton. At this roundabout take the B3168 towards Ilminster. After 50 yards turn right to Rose Mills by large white sign. Go to end of lane.

Opening times: 11am - 6pm



S	S	M	T	W	T	F	S	S	M	T	W	T	F	S	S
23	24	25	26	27	28	29	30	1	2	3	4	5	6	7	8



90 'MUSE' AT CHARD MUSEUM

MIXED MEDIA

Caitlin Heffernan

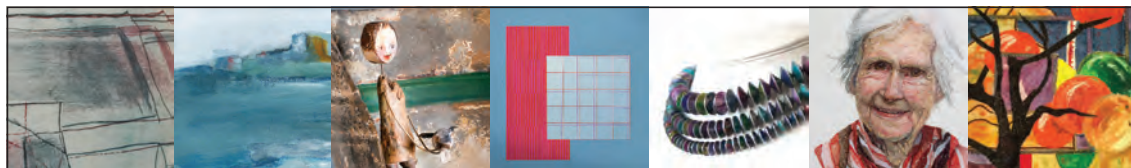
Chard Museum is one of eight venues across Somerset and Devon to take part in Muse, a project which has enabled contemporary artists to respond to the fascinating historic collections held within community museums within the two counties. See inside back cover for more information. Find out more about Muse: musemakers.wordpress.com

Godworthy House, High Street, Chard, TA20 1QB

T: 01460 65091 • E: info@chardmuseum.co.uk • W: www.chardmuseum.co.uk

Directions: Chard Museum is on the A30 about 300 yards west (uphill) of Chard Guildhall. Opening times: Mon - Fri 10am - 4pm, Sat 10am - 1pm. Entry by donation.

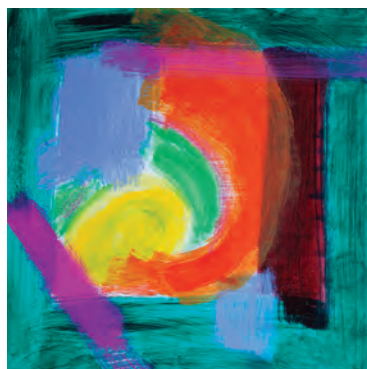
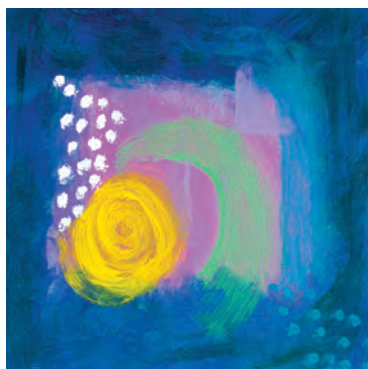
S	S	M	T	W	T	F	S	S	M	T	W	T	F	S	S
23	24	25	26	27	28	29	30	1	2	3	4	5	6	7	8



Showcasing contemporary craft and art alongside an inspiring exhibition programme of work by local and national artists



Market Place, Somerton, Somerset TA11 7NB • 01458 273008 • www.acearts.co.uk



91 JACKDAW STUDIO

PAINTINGS, PHOTOGRAPHY

Michael Defriez, Hilary Defriez, Patricia Barbor: Our project as artists is to integrate our World within, with the World out there. To plunder memory, vision, and experience. To create form from painting and photography using vibrant colour or austere monochrome.

Annie Dent: Photographer constantly foraging for new ways to portray her view of the World.

Robert Nunny: Observing balance and movement in nature.

Jackdaw Studio, Carpenters Cottage, Wambrook, Chard, TA20 3EN

T: 01460 65504 • E: michael@jackdawstudio.co.uk

Directions: Jackdaw Studio is next to Cotley Inn, Wambrook. From Chard take A30 towards Honiton. Take first left at Toll House after leaving Chard. Follow signs to Cotley Inn and venue.

Opening times: 11am - 6pm



S	S	M	T	W	T	F	S	S	M	T	W	T	F	S	S
23	24	25	26	27	28	29	30	1	2	3	4	5	6	7	8

92 ALICE CRANE, TIM MARTIN AND GUESTS

FILM, INSTALLATION, PRINTS, DRAWING, SCULPTURE

This 'family friendly' weekend explores the future 'prospects' of this historic, listed tithe barn, its farm buildings and courtyard. Disused spaces fighting gravity and time reveal the secrets of a disappearing world through 'Cotley red' doors.

Alice Crane, Tim Martin, Jon England, Michael Calver, Simon Lee Dicker, Liz Gregory, Andre Wallace, Megan Calver, Mich Downing, Lucia Harley, Paul Newman, Gabriella Hoad, Nicola Kerslake and Gordon Field create temporary artworks, installations, film and events to celebrate these unique spaces.

Cotley Tithe Barn, Cotley, near Chard, TA20 3EP

T: 07976 118650 / 07967 989839 • W: www.timmartin.org.uk

Directions: Turn left off A30 outside Chard at Toll House, first left, left at red post, stay on road 1 mile, at venue sign turn right and through white gate.



Opening times: Friday 11am - 5pm,
Friday evening event 7pm - late, Saturday
11am - 5pm, Sunday 11am - 4pm



S	S	M	T	W	T	F	S	S	M	T	W	T	F	S	S
23	24	25	26	27	28	29	30	1	2	3	4	5	6	7	8

Yeovil SUPER SATURDAY

YEovil TOWN CENTRE 23 SEPTEMBER 9.30am - 4pm



YEovil BUSK FEST
CELEBRATING GARDENING
YEovil INDEPENDENT MARKET
SONG & DANCE FEST
BUGFEST
CHILDREN'S ACTIVITIES
AND MUCH MORE! www.facebook.com/yeovilsupersaturday



93 A LANDSCAPE OF OBJECTS AT FORDE ABBEY

GLASS, CERAMICS, WOOD

Inspired by the landscape at Forde Abbey, a sculpture trail around the house and gardens incorporating work by artists **Anne Marie O'Sullivan** and **Tom McWalter, Eleanor Lakelin, Vezzini & Chen, Kaori Tatebayashi** and **Katie Spragg**, curated by Yvonna Demczynska of London's Flow Gallery. Free parking, gift shop, plant nursery and a tearoom serving light lunches, snacks and cakes.

Forde Abbey, Chard, TA20 4LU

T: 01460 221290 • E: info@fordeabbey.co.uk

W: www.fordeabbey.co.uk/event/a-landscape-of-objects/

Directions: Forde Abbey is situated 4 miles south east of Chard. Follow brown tourist signs for Forde Abbey from the A30, A358 and B3165 and ignore satnav as you get close to Forde Abbey. Trains - Crewkerne Station 5 miles.

Opening times: Gardens 10am - 4.30pm, House 12pm - 4pm (Entry charges apply). Please note the House is closed on Mondays and Saturdays.



SCW project

S	S	M	T	W	T	F	S	S	M	T	W	T	F	S	S
23	24	25	26	27	28	29	30	1	2	3	4	5	6	7	8



94 JANE PHILLIPS, MARY STACK, EMMA BARNETT

PAINTING, SCULPTURE, DRAWING

Jane Phillips: Oils of Somerset to Morocco and garden flowers. Sculptures of animals and the human figure. Commissions accepted. Donations to Free Yazedi Foundation.

Mary Stack: Capturing people's moods and the spontaneity of the moment with pen, ink and wash. **Emma Barnett:** Paintings. Blue shadows, skies of white and grey, places and time in your imagination.

Fosseway, High Street, Hinton St George, TA17 8SE

T: 01460 72420 • E: jane@janephillipspaintings.com • W: www.janephillipspaintings.com

Directions: In the High Street opposite the Lord Poulett Arms. Black iron gates into drive and studio beyond.

Opening times: 11am - 6pm

S	S	M	T	W	T	F	S	S	M	T	W	T	F	S	S
23	24	25	26	27	28	29	30	1	2	3	4	5	6	7	8



Good



Offsite



95 ARTISTS CENTRE AT THE READING ROOM

MIXED MEDIA, TEXTILES, PAINTING, PRINTS, DRAWING

Sarah Trevithick: Discarded fragments, stitch and nature to produce experimental textiles and mixed media pieces. Also, wildlife inspired cushions and lampshades. **Kate Norton:** Yarn wrapping, stitch, wet felt and lino printing create unusual mixed media landscapes. **Kate Westwood:** Detailed and dramatic work in a variety of media inspired by human nature and wildlife.

The Reading Room, Great Street, Norton Sub Hamdon, TA14 6SG

T: 07738 614081 • E: kate_westwood1@hotmail.com

Directions: From the A303, take the A356 towards Crewkerne then the second left into Great Street (signposted Norton-Sub-Hamdon). Venue on the right. Parking on road or in church car park.

Opening times: Wednesday - Sunday 11am - 6pm (Thursdays 1 - 6pm)

S	S	M	T	W	T	F	S	S	M	T	W	T	F	S	S
23	24	25	26	27	28	29	30	1	2	3	4	5	6	7	8



Good



Offsite





96 CHRIS KAMPF AND JOHN GAMMANS

SCULPTURE, PAINTING, PRINTS, DRAWING, METALWORK

John's impressionistic Landscapes and Seascapes are vibrant, dramatic and capture an almost ethereal quality. John is inspired by the Somerset countryside and a recent visit to Iceland. Mixed media on a variety of board and canvas.

Chris' sculptures use nature's structures to create large ornamental stakes and oak-mounted forms in rusted steel and shiny stainless steel. As well as large statement pieces, ornate panels, fire cubes, plant stakes, Rex the Mouse is back! Prices from £7 to £1200.

Cakes available Friday - Sunday. www.thesilvercake.co.uk

29 North Street, Martock, TA12 6DH

T: 01935 827836

John: 07580 667343 / info@johnngammans.co.uk / www.johnngammans.co.uk

Chris: 0775 3520479 / info@ckgardensculptures.co.uk / www.ckgardensculptures.co.uk

Directions: Please park in Moorlands car park next to the Bakery and Co-op. We have the last gates on the left at the far end. Come straight in.

Opening times: 10.30am - 5.30pm

S	S	M	T	W	T	F	S	S	M	T	W	T	F	S	S
23	24	25	26	27	28	29	30	1	2	3	4	5	6	7	8



97 WATER-MEADOW-WOOD

INSTALLATION, MIXED MEDIA

SAW awarded **Elizabeth Jardine** the 'Wood' 2017 artist residency for this project, working with family groups, schools and the Countryside Team at South Somerset District Council. An exhibition of work created by participants through exploration of the natural, cultural and historical heritage of Yeovil Country Park.

Cafe Bar, The Octagon Theatre, Hendford, Yeovil, BA20 1UX

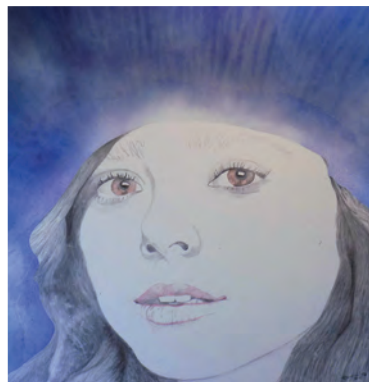
T: 01935 422884 • E: info@somersetartworks.org.uk

W: www.watermeadowwood.wordpress.com

Directions: Located in the centre of Yeovil.

Opening times: Monday - Saturday 12noon - 5pm, plus theatre show evenings

S	S	M	T	W	T	F	S	S	M	T	W	T	F	S	S
23	24	25	26	27	28	29	30	1	2	3	4	5	6	7	8



98 PHILLIP JENNINGS

MIXED MEDIA, PAINTING, PRINTS, DRAWING

My artwork is based on realism, experimental and abstract, it stems from my knowledge gained at art schools between the mid to late '60s at Yeovil and Taunton. Now as an OAP in my mid 60s I thought it was time to create my own artwork on a large format in mixed media. My artwork price range between £100 and £500.

94 Club, Middle Street, Yeovil, BA20 1LT

T: 01935 423037 • E: info@libclub.co.uk

Directions: Yeovil Town Centre at the bottom of Middle Street, very near Yeovil Bus Station, the club is surrounded by many car parks.

Opening times: 11am - 6pm

S	S	M	T	W	T	F	S	S	M	T	W	T	F	S	S
23	24	25	26	27	28	29	30	1	2	3	4	5	6	7	8



99 ISOBEL ADDERLEY: D R A W N O N W A R D

INSTALLATION

A solo durational choreographed performance, alongside rocks, bones and small sculptures which will surround Isobel as she performs. Using a chiffon costume as a dancing partner, she will hold contorted, strained poses which flicker from stillness into uncontrollable movement as her limbs become tired with the strain of tension.

Eastville Project Space, 2/F, Thorn House, Eastville, Yeovil, BA21 4JD

T: 07887 379388 • E: info@eastvilleproject.org.uk • W: www.eastvilleproject.org.uk

Directions: 5 mins walk from Yeovil Pen Mill train station and 10 mins walk from Yeovil Town Centre. Located on the 2nd floor of Thorne House, a large industrial building on the right as you turn into Eastville. We are above 'The Hub'.

Opening times: Saturday 7 October, 4.30 - 9.30pm. Performance 5.30 - 6.30pm

S	S	M	T	W	T	F	S	S	M	T	W	T	F	S	S
23	24	25	26	27	28	29	30	1	2	3	4	5	6	7	8



Good



Onsite



SCW
project



100 FRESH IN LANGPORT

GLASS, CERAMICS

New, collectable, live.

A wide ranging show for this years Somerset Art Weeks Festival. **Heidi Warr, Lorraine Tuck, Holly Webb and Will Shakspeare** to feature. Desirable ceramics, jewellery, glass and paintings.

Parking, coffee shop, deck by river, demos [please call for details].

Kate Shakspeare, Westover, Langport, TA10 9RB

T: 01458 252477 • E: kate@shakspeareglass.co.uk

W: www.shakspeareglass.co.uk

Directions: A few metres from A378 in Langport. By Bow Bridge, River Parrett and next to Levels Basket Centre.

Opening times: 10am - 5pm

S	S	M	T	W	T	F	S	S	M	T	W	T	F	S	S
23	24	25	26	27	28	29	30	1	2	3	4	5	6	7	8



Partial



Onsite



101 ANNA BEST: 'THE CUTS'

NEW MEDIA

Anna Best's new work responds to the experiences of Prospectus - can we make a cohort? a group connected by shared enquiry? How can we enable the process and create something that emerges in the tension between individual and collective? There's also audio from the participating artists, a new public resource highlighting issues relevant to our practices. See page 45.

Huish Episcopi Academy, Wincanton Road, Langport, TA11 9SS

T: 01458 250501 • E: Office@huishepiscopi.somerset.sch.uk

W: www.huishepiscopi.net

Directions: Situated on the eastern edge of the historic town of Langport.

Opening times: 4 - 6pm

S	S	M	T	W	T	F	S	S	M	T	W	T	F	S	S
23	24	25	26	27	28	29	30	1	2	3	4	5	6	7	8



Good



Onsite



SCW
project





102 HEPTAD: OBJECTSCAPES

TEXTILES, MIXED MEDIA

Marie Andrews, Jenny Blackburn, Hilary Farthing, Janet Hiscox, Thelma Masters, Heather Robinson, Jane Warren, Edith White

Somerton Old Town Hall is the new venue for this established group of textile artists.

Diverse objects chosen by each artist inspire the embroidery and textiles in this eclectic exhibition. The group aims to dispel conventional expectations of traditional embroidery. Their work demonstrates innovative design, incorporating fabric, thread, paper and mixed media, together with dyeing and printing.

ACEarts Gallery, The Old Town Hall, Market Place, Somerton, TA11 7NB

T: 01458 273008 • E: aceartssomerset@icloud.com • W: www.acearts.co.uk

Directions: Located in the centre of Somerton, opposite St Michael's Church and alongside The Market Cross. Good local parking.

Opening times: Monday to Saturday 10am - 5pm, Sunday 11am - 4pm

S	S	M	T	W	T	F	S	S	M	T	W	T	F	S	S
23	24	25	26	27	28	29	30	1	2	3	4	5	6	7	8



Not good



Offsite





103 ANTHONY HOSSACK AND RACHEL EARDLEY

JEWELLERY, SILVERWORK, PAINTING, PRINTS, DRAWING, FURNITURE, INTERIORS

Anthony Hossack: Abstractions on paper. **Rachel Eardley:** Artist and Silversmith. Intricately hand-cut pieces from de-commissioned coins from around the world, then worked with sterling silver to create stunning contemporary jewellery. Each individual piece comes in an illustrated box documenting details and its history. Rachel will also showcase her drawings, prints and embroideries.

Life Interiors & Antiques Boutique, London House, New Street, Somerton, TA11 7PD

T: 07884 310950 • E: lifeengland@gmail.com • W: www.racheleardley.com

Directions: Quirky antiques and interiors boutique in Somerton, find us on the corner of New Street and Broad Street, next to the Barbers Shop, opposite Cow Square.

Opening times: 11am - 6pm



S	S	M	T	W	T	F	S	S	M	T	W	T	F	S	S
23	24	25	26	27	28	29	30	1	2	3	4	5	6	7	8



104 A LANDSCAPE OF OBJECTS

METALWORK, TEXTILES

Join us at the splendid arts and craft setting of Lytes Cary for an outstanding showcase of contemporary craft inspired by nature. Enjoy live demonstrations and talks, get hands-on in taster workshops and browse pop-up shops. See skilled makers demonstrate their crafts. Chat to makers about their techniques, buy their work or simply enjoy watching them in action. Browse and buy unique pieces as once again, we've teamed up with FLOW London curator of Herbarium. + others. Inspiring installation by Lucy Large. Talks by renowned makers Annemarie O'Sullivan and Liz Clay.

Have a go and try out a new skill in a hands-on workshop with Flora Arbuthnott and Jessica Palmer.

Lytes Cary Manor, Ilchester Road, near Somerton, TA11 7HU

T: 01458 224471

E: lytescarymanor@nationaltrust.org.uk

W: www.nationaltrust.org.uk/lytes-cary-manor

Directions: Just off A372 near Kingsdon. Signposted, 1 mile from A303.

Opening times: 11am - 4pm. Charges apply.

S	S	M	T	W	T	F	S	S	M	T	W	T	F	S	S
23	24	25	26	27	28	29	30	1	2	3	4	5	6	7	8



105 JEAN STEVENS, ANN FAGAN, LIZ BIESTY

PRINTMAKING

A group of printmakers who have exhibited together before. An exhibition of new work inspired by natural forms, landscape, colour and pattern. On show will be a range of limited edition prints using a variety of traditional printmaking techniques including linocut, etchings, mono prints, drypoint and collagraph. Cakes and refreshments provided.

Applewood, High Street, Keinton Mandeville, TA11 6ED

T: 07768 637009 • E: jeanstevens@icloud.com • W: www.jeanstevens.co.uk

Directions: Located on the B3153, near the Quarry Inn on the High Street.

Opening times: 11am - 5pm

S	S	M	T	W	T	F	S	S	M	T	W	T	F	S	S
23	24	25	26	27	28	29	30	1	2	3	4	5	6	7	8



106 DUTCH ENGELS

MIXED MEDIA, PHOTOGRAPHY, PAINTING

The prospect of discovering Everyday Wonders breathes life into the overlooked and often forgotten. Objects are abstracted and expressed as a mirror of their context. The physical captured and moved into the digital. Documented via Instagram, followed (@dutch_engels), constricted, filtered and abstracted back into an analog environment. The works invite you to make your own meaning and connection.

Temple Barn Studio, 15 High Street, Templecombe, BA8 0JD

T: 07754 919099 • E: art@dutch-engels.co.uk • W: www.dutch-engels.co.uk

Directions: Top of High Street, next to the small roundabout with the Yew Tree on.

Opening times: 11am - 6pm

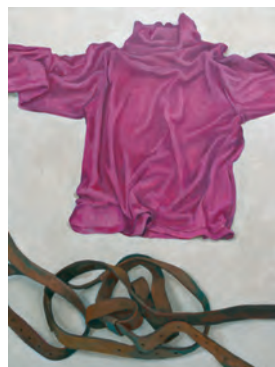
S	S	M	T	W	T	F	S	S	M	T	W	T	F	S	S
23	24	25	26	27	28	29	30	1	2	3	4	5	6	7	8



Not good



Onsite



107 COCKHILL STUDIOS

PAINTINGS, PRINTS, DRAWINGS

Three artists explore a range of subjects in a variety of media.

Will Vaughan's work represents the most traditional exploration of 'prospects', in etchings and watercolours of rural Somerset.

In **Biddy Peppin's** oil paintings, familiar objects and materials are assembled in unfamiliar configurations.

In guest artist **Rob Curtis'** lino prints, panoramic views are contrasted with unexpected details.

Illustrated talks: Will 29 September, 6pm / Biddy 6 October, 6pm

Lower Cockhill Farm, Barrow Road, Castle Cary, BA7 7NZ

T: 01963 351840 • E: will@willvaughan.com • W: www.willvaughan.com

Directions: From Station Road, Castle Cary, turn down Torbay Road to signpost. We are about a mile along the road to North Barrow.

Opening times: 11am - 1pm and 2 - 5.30pm



Partial



Onsite



S	S	M	T	W	T	F	S	S	M	T	W	T	F	S	S
23	24	25	26	27	28	29	30	1	2	3	4	5	6	7	8

porcelain beads & jewellery



www.fossebeads.co.uk



Lila Streether *Botanical artist*



Yasemin Sweet
FILIGREE



yaseminsweet.co.uk

108 TWO ARTISTS AND A BOOKSHOP

BOOKS, PAPER, DRAWING

The Scott siblings explore how literature and Bailey Hill Bookshop inform their art. Slade post-graduate **Lotte Scott**'s work is rooted in and inspired by Somerset landscape; freelance illustrator and graphic designer **Gus Scott** uses block colour to create scenes of energy and excitement in his prints. Behind every great artist is a great bookshop.

Fore Street, Castle Cary, BA7 7BG

T: 01963 350917 • E: bhbsnews@gmail.com • W: www.baileyhillbookshop.com

Directions: On the Main High Street in Castle Cary not far from the Market House.

Opening times: 9.30am - 5pm

S	S	M	T	W	T	F	S	S	M	T	W	T	F	S	S
23	24	25	26	27	28	29	30	1	2	3	4	5	6	7	8



Not good



Offsite



109 SILK HOUSE ARTISTS

CERAMICS, MIXED MEDIA, PAINTING

Judy Hall: A memory, a glimpse of hidden landscape and the minerals beneath. Some grey scenes textured, others brightly coloured.

Beryl Fraenkel: BA Honours in Modern Art. Her paintings are mostly about colour and light.

Sue Williams: Atmospheric hand-built ceramics- raku and barrel fired. Also showcasing new sculptural pieces inspired by myth and legend.

www.suewilliams4sculpture.co.uk

Works vary between £40 - £400

Silk House, Bailey Hill, Castle Cary, BA7 7AD

T: 01963 359618 • E: judith.hall2@btinternet.com • W: www.artists303.org.uk

Directions: 2 Hour parking available behind the Market House by the Post Office and small jail. Also free parking behind garage at bottom of town.

Opening times: 10.30am - 5.30pm



Good




Offsite







S	S	M	T	W	T	F	S	S	M	T	W	T	F	S	S
23	24	25	26	27	28	29	30	1	2	3	4	5	6	7	8


ENJOY 10% DISCOUNT ONLINE



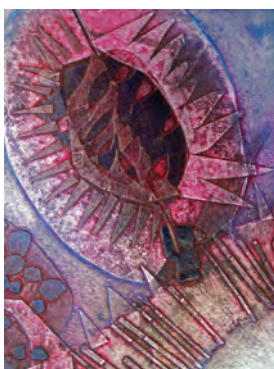
FORDE ABBEY
HOUSE & GARDENS

www.fordeabbey.co.uk



WALK IN THE FOOTSTEPS OF MONKS. 900 YEARS OF HISTORY. 30 ACRES OF AWARD-WINNING GARDENS, & 160FT FOUNTAIN. FAMILY FRIENDLY, DOGS WELCOME. PLANT NURSERY, CAFE AND NEW WILLOW DEN.



110 ANTICIPATION

CERAMICS, PAINTING, PRINTMAKING

Cath Bloomfield, Linda Bristow, Belinda Brownlee, Alison Potter and Denise de Freitas

An exhibition full of colour and texture exploring form and decoration, reflecting our view of the natural world. We have exhibited widely together for the last ten years. Over much coffee and cake we have exchanged ideas, helping to push our work forward.

Our invited Artist this year is **Kate Cochrane**, who pays homage to life's abundance through an intense

exploration of colour and abstraction. We look forward to exhibiting with her.

The Market House, Market Place, Castle Cary, BA7 7AH

T: 01963 351763 • E: belinda.brownlee@btconnect.com
W: www.belindabrownlee.co.uk

Directions: The Market House is in the centre of Castle Cary town. A free car park is available a five minute walk away.
Opening times: 11am - 5pm

S	S	M	T	W	T	F	S	S	M	T	W	T	F	S	S
23	24	25	26	27	28	29	30	1	2	3	4	5	6	7	8



**Bridport & West
Dorset Open Studios**
9 - 17 September 2017
Celebrating Bridport's Vibrant Art Scene

www.bos2017.website

**FREE
GUIDE**

**NOW IN
SEPTEMBER**





111 RUSSIANS IN SOMERSET

PAINTING

Irina Eroshkina, Iurii Vasiliev, Azat Galimov, Tatiana Lushnikova

SAW chairman, Richard Pomeroy, visited Saint Petersburg in June 2016 where the city has a strong tradition of landscape painting in the open air. SAW has invited four of the most prominent painters in that tradition to Somerset to spend time painting with artists in the region. They will visit some of Somerset's special historic landscapes and estates such as Forde Abbey, Hestercombe and more, with SAW members and other artists and students so that they can paint in the landscape. This will be partly educational and partly a coming together of cultures. Russian Jazz pianist Vladimir Miller playing live on Saturday 30 September.

The Old Bank House, High Street, Castle Cary, BA7 7AW

T: 07811 368863 • E: sally@clerkenwellfineart.com • W: www.thegallerybar.co.uk

Directions: At the top end of the High Street, approx 50 metres from the Market House.

Opening times: 10am - 5pm (Thursday - Saturday open until 11pm serving drinks and wood fired pizza)

S	S	M	T	W	T	F	S	S	M	T	W	T	F	S	S
23	24	25	26	27	28	29	30	1	2	3	4	5	6	7	8



Not good



Offsite



112 ART AT THE HOT BOX

PAINTING, PRINTS, DRAWING

Jan Duffin: Watercolours using glazing and fine detail to build bright colour based on a Suffolk childhood when the ditches were full of violets and primroses in spring.

John Whitchurch: Pastels and oils of military subjects, from his four decades in the army, as well as seascapes, landscapes and characterful portraits.

The Hot Box, Olympic Drive, Castle Cary, BA7 7GB

T: 07784 740205 • E: paduffin@hotmail.com

Directions: From the A371 turn into Olympic Drive. At the end of the Drive turn right and The Hot Box is immediately on the left.

Opening times: 10am - 5pm

S	S	M	T	W	T	F	S	S	M	T	W	T	F	S	S
23	24	25	26	27	28	29	30	1	2	3	4	5	6	7	8



Partial



Onsite

113 BEES: THE INTERCONNECTEDNESS OF ALL THINGS

TEXTILES

Taught by Lydia Needle, Bruton School for Girls students will sculpt tiny, lifesize British bees in wool, representing just a few of the 260 varieties left in the UK. The bees become artworks as part of a whole school installation in the school's gallery. To follow up this work, the students will research the habitats and ecosystems, the flora and fauna that rely on bees, to create companion artworks. Our objective is to raise awareness of the diversity of bees in Britain and to spread the story - using art as a medium - as far as possible.

Sunny Hill, Bruton, BA10 0NT

T: 01749 814400 • E: events@brutonschool.co.uk • W: www.brutonschool.co.uk

Directions: Located just outside the town of Bruton on the A359 between Bruton and Castle Cary. Parking available in the Senior School car park, directly off the A359.

Opening times: 11am - 6pm



Partial



Onsite



S	S	M	T	W	T	F	S	S	M	T	W	T	F	S	S
23	24	25	26	27	28	29	30	1	2	3	4	5	6	7	8

114 SHEPTON MONTAGUE ART AND CERAMICS

CERAMICS, TEXTILES, PAINTING

As local artists we use our chosen media to describe and react to the land and nature around us. **Carole-Anne Adlington:** original paintings in watercolour and mixed media. **Margaret Bowman:** ceramics both sculptural and practical inspired by Somerset land, water and nature. **Sheila Carpenter:** fabric inspires the making of handbags; with clay, the creation of garden pots. Imagination does the rest!

Shepton Montague Village Hall, Shepton Montague, BA9 8JQ

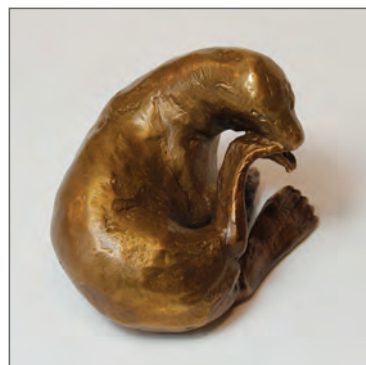
T: 07753 824966 • E: artceramics@sheptonhouse.eu

Directions: The village Hall is next to the church, 0.4m downhill from Montague Inn crossroads.

Opening times: 11am - 5pm

S	S	M	T	W	T	F	S	S	M	T	W	T	F	S	S
23	24	25	26	27	28	29	30	1	2	3	4	5	6	7	8

Partial Onsite



115 MORETON ARTISTS AT ROUNDHILL

PAINTING, PRINTS, DRAWING, CERAMICS, SCULPTURE

Brigid paints in oils, pastels, watercolour and drawing is a key part of her practice. She enjoys painting portraits and printmaking, particularly etching.

Matilda works as a designer, ceramicist and teacher of ceramics. Her recent practice includes thrown tableware decorated with cobalt oxide painted over impressed plants, reminiscent of cyanotypes. www.matildamoreton.com

Charlotte creates lively sculptures of animals in steel, bronze, clay and willow, and undertakes bronze portrait commissions. She also draws and makes prints, and teaches adults and children. www.charlottesmoreton.co.uk

Roundhill Farm, Charlton Musgrove, BA9 8HH

T: 01963 33256 / 07478 671755 • E: info@charlottesmoreton.co.uk

Directions: 2 miles along B3081 from A303 (Hunters Lodge) towards Bruton (2 miles). Beyond Charlton Musgrove opposite high red brick garden wall. Before Wincanton-Bruton T-junction (also B3081).

Opening times: 11am - 6pm

Good Onsite

S	S	M	T	W	T	F	S	S	M	T	W	T	F	S	S
23	24	25	26	27	28	29	30	1	2	3	4	5	6	7	8

HOT CLAY

For all your Pottery Supplies

www.hot-clay.co.uk

Your link to art and culture

Courses and workshops with inspiring, friendly tutors. Community events, films, cultural trips and more...

Contact us for a free copy of our programme

01935 815899

www.sherborneartslink.org.uk

Registered Charity no. 1007680

Sherborne ArtsLink, The Manor House, Sherborne DT9 3JG



116 SHAVE FARM

PAINTING, PRINTS, DRAWING, CERAMICS, INSTALLATION

Rowena Pearce: Paper transformations, artmusic film.

Terri Hogan: Exploration of the Cornish coast and landscape, mixed media (www.terrihogan.co.uk). **Kay Lewis-Bell:** Real and imagined colour and line experiments and installations (klbartist.wordpress.com).

Colin Bell: Ceramic sculptures and digital photo montages, colourful and unexpected (Instagram bell.colin).

Annemarie Blake: New works and cityscapes, printing and painting (www.annemarieblakefineart.co.uk).

Lin Hawkins: The Red and the Black. **John Buckler:** Feel free collage and relief prints (Instagram johnbuckler6226).

Tim Millar: Galanty shows. **Annie Fry:** Objects, illusion and intrigue (www.anniefry.co.uk Instagram annie.fry).

Gallery Cafe with astonishing cakes.

Shave Farm, South Brewham, BA10 0LG

T: 01749 812335 • E: annie@greyslaw.co.uk

Directions: B3081 from Wincanton to Bruton: turn right at Redlynch crossroads, go past the Bull Inn and follow the road towards Brewham; drive along an open straight stretch then take the lane on the right (before the duck pond).

Opening times: 11am - 6pm

S	S	M	T	W	T	F	S	S	M	T	W	T	F	S	S
23	24	25	26	27	28	29	30	1	2	3	4	5	6	7	8



Not good



Onsite



NO FUTURE

prospect

BRUTON
ART
FACTORY



117

NO FUTURE PROSPECTS: THE SOUP KITCHEN OF LOVE BRUTON ART FACTORY

12 artists in residence MAKE SOUP at the Bruton Art Factory daily. A hotly anticipated casting of Factory Superstar artists, poets, performers, filmmakers, photographers. Details to follow.

Daily dinnertimes 1pm and 4pm. Free event, all welcome, no need to book, just turn up. It's an Open House at the Bruton Art Factory, the epicentre of the Festival.

Everyday there's something new. Each artist in residence will show their work at the gallery. See their work. Meet the artist. Talk about art and other things.

Join us for an inspirational 16 days of happenings.

Back by popular demand, cult favourite:

The Colony Room Club Somerset

The Official Festival Club of Somerset Art Weeks Festival 2017. A taster of the legendary Soho Drinking Den returns to the Bruton Art Factory, serving refreshments, where every bohemian from Bacon to Hirst, Emin to Freud passed from the Guided Gutter onto the Green Carpet.

Bruton Art Factory, 7 Old Mill Industrial Estate, Bruton, BA10 0EH

T: 07904 374115 • E: suzanne@ideasinc.co.uk

W: www.brutonartfactory.co.uk

Directions: From the one way system turn left at the church and then left into Bruton Industrial estate.

Opening times: 10am - 5pm

**Soup Kitchen of Love
and Colony Room Club Somerset
LAUNCH PARTY**

Saturday 23 September

3 - 5pm, all welcome



BRUTON
ART
FACTORY

THE COLONY
ROOM CLUB
SOMERSET
BRUTON ART FACTORY

S	S	M	T	W	T	F	S	S	M	T	W	T	F	S	S
23	24	25	26	27	28	29	30	1	2	3	4	5	6	7	8



Good



Onsite





118 KING'S BRUTON SCHOOL: WHO WHAT WHERE?

MIXED MEDIA

This is an exhibition with an open prospect i.e. art with a broad horizon. As such we will be mixing media, genres and ages to create a dynamic experience for all.

The Design Centre, King's School, Bruton, BA10 0ED

T: 01749 814200 • E: sws@kingsbruton.com • W: www.kingsbruton.com

Directions: 300 metres after the church turn left into main entrance and follow parking signs. Please report to Reception.

Opening times: 2 - 4pm (may be subject to change)

S	S	M	T	W	T	F	S	S	M	T	W	T	F	S	S
23	24	25	26	27	28	29	30	1	2	3	4	5	6	7	8



119 MARK PICKTHALL

PHOTOGRAPHY

'Light & Fire' is a collaboration with artists and dancers to capture the beauty and power of fire and performance. Set in various locations throughout the UK and abroad, the work aims to set performance in context with the lighting challenges this subject matter presents. My grateful thanks to all involved.

Bord Hall, Mill Lane, Bruton, BA10 0AT

T: 07885 345247 • E: pickthall@ionriver.com

W: www.markpickthall.com

Directions: A359 in the Bruton one way system right into Mill Lane and first gravel drive on the right. Parking on the main street 2hrs max or on Lower Backway.

Opening times: 11am - 6pm



S	S	M	T	W	T	F	S	S	M	T	W	T	F	S	S
23	24	25	26	27	28	29	30	1	2	3	4	5	6	7	8



120 'MUSE' AT BRUTON MUSEUM

MIXED MEDIA

Dorcas Casey

Bruton Museum is one of eight venues across Somerset and Devon to take part in Muse, a project which has enabled contemporary artists to respond to the fascinating historic collections held within community museums within the two counties. Free entry. See inside back cover for more information. Find out more about Muse: musemakers.wordpress.com

Bruton Museum, 26 High Street, Bruton, BA10 0AA

T: 01749 812294 • E: jackdawbrooks@googlemail.com

Directions: Towards the end of the (one way) High Street on the right hand side.

Opening times: Mon - Fri 11am - 1pm, Sat 11am - 3pm, Sun 12noon - 3pm.

S	S	M	T	W	T	F	S	S	M	T	W	T	F	S	S
23	24	25	26	27	28	29	30	1	2	3	4	5	6	7	8



S&W
project

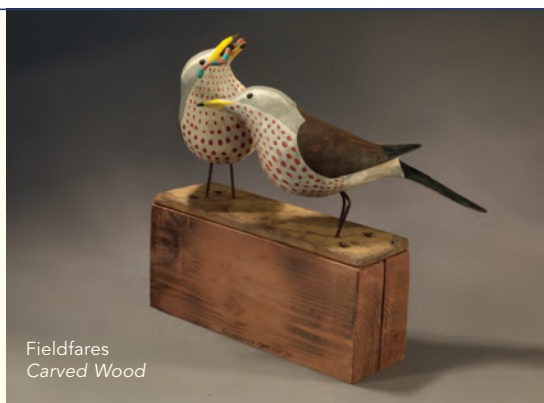
GUY TAPLIN
16th September – 4th October

Next Exhibition
JOHN MADDISON 28th October

www.jerramgallery.com

THE JERRAM GALLERY
Half Moon Street, Sherborne,
Dorset DT9 3LN

01935 815261
info@jerramgallery.com
Tuesday - Saturday



Fieldfares
Carved Wood

INDEX

ARTISTS

*SAW Member

A

Abraham, Sabine* 9
Adderley, Isobel* 99
Adlington, Carole Anne* 114
Alexander, Lucy* 18
Allen, Chrys* 68
Andrews, Marie* 103
Arbuthnott, Flora 104
Arlow, Lynne 50
Arnison, Juliet* 43
Art, Jinks* 67
Ashar* 12
Ashman, Malcolm 34

B

Baker, Louise* 68
Barbor, Patricia 91
Barchard, Janine* 41
Barnett, Emma 94
Barron, Jenny* 63, 65
Bell, Colin* 116
Benson, Joslyn* 84
Berry, Valerie* 61
Best, Anna 79, 101
Biesty, Liz* 105
Binks, Nicky* 38
Blackburn, Jenny* 103
Blake, Annemarie 116
Bloomfield, Cath* 110
Boak, Paul* 13
Board, Pat* 85
Booth, Vivien* 9
Bowman, Margaret* 114
Bradshaw, Bronwen* 21
Bradshaw, Emma* 65
Brayne, David NWS* 11
Brayne, Jane* 11
Briar, Joanna* 15
Brims, Janey* 51
Bristow, Linda 110
Brobson, Michael* 15
Brown, Lorna 41
Brownlee, Belinda* 110
Buckler, John* 116
Burden, Steve* 39
Burke, Laura* 21

C

Campbell, Fiona* 3, 55
Campbell, Sharon* 45
Carpenter, Sheila 114
Casey, Dorcas 120
Cawte, James* 41
Cellan Jones, Lavinia* 16
Champion, Judith* 50
Coates, Russell* 8
Cochrane, Kate 110
Collins, Hannah* 13
Cottey, Louise* 86
Cotton, Nick, 65

Crane, Alice* 92
Crosher, Judy* 71
Curtis, Jackie* 47
Curtis, Rob 107

D

Davey, Leo* 66, 67
Davey, Toni, Andy*, Rose 66
Davies, Lorna* 47
Davies, Nerys* 28
de Freitas, Denise 110
Defriez, Hilary* 91
Defriez, Michael* 91
Dent, Annie* 91
Dobson, June* 86
Dodd, Tina* 43
Down, Louis 67
Drew, Ruth* 76
Dudman, Philip* 74
Duffin, Jan* 112

E

Eardley, Rachel 102
Elfick, Pennie* 21, 54
Elliston, Francesca* 77
Elsebach, Angelika* 26
Eroshkina, Irina 111
Erwin, Justin 89
Evans, Jane* 13
Ewens, Marilyn* 65

F

Fagan, Ann* 105
Farmer, Anne* 46
Farthing, Hilary* 103
Fraenkel, Beryl 109
Frederick, Camilla* 9
Fry, Annie* 116

G

Galimov, Azat 111
Gammans, John* 96
Gilmore, Sue* 21
Grafton, Ele 2
Graham, David 46
Graham, Jenny* 21, 46
Green, Grace* 89
Gunton, Claudia* 12
Gutteridge, Suzie 8

H

Hall, Judy* 109
Harden, Frances* 30
Harris, Ione* 64
Harris, Sean 32
Hawkins, Lin* 116
Heffernan, Caitlin 90
Hey, Martin 39
Hibbard, Peter 57
Hingston, Fiona* 21
Hiscox, Janet 103
Hogan, Terri* 116
Holmes, Treston* 69
Hood, Jane* 64

Hossack, Anthony* 102
Houlden, Lorraine 20
Hubbard, Rose 12

J

Jacobs, Alison* 59
Jardine, Elizabeth 97
Jeffery, Judy 70
Jennings, Phillip* 98
Johnston, Miranda* 67
Jon, Casey 19

K

Kampf, Chris* 96
Karn, Barbara* 45
Kerr PRWA, Janette* 34
Knapp, Angela* 19
Koutroumpas, Dimitris 16

L

Lakelin, Eleanor 93
Langley, Siddy* 73
Large, Lucy* 104
Lawrence, Janet* 58
Lawrence, Lis* 16
Lawrence, Peter* 16
Lawrence, Rodney 20
Lawrence, William* 58
Ledson, Simon* 39
Lee-Bertram, Rossanne 57
Lee, Chris* 30, 45
Lee, Mal* 75
Lee, Una 77
Leete, Cecilia* 61
Lerry, Pauline* 80
Lewis-Bell, Kay* 116
Lintern, Martyn 63
Lock, Peggy* 65
Lovegrove, Wendy 41
Lowe, Sue* 61
Lumley, Emma* 64
Lushnikova, Tatiana 111
Lynch, Kate 25

M

M H Goldsmith 44
Macey, Terry* 26
Marlow MRBS, Ian* 44
Martin, Charlotte 89
Martin, Jan* 63
Martin, Michael* 45
Martin, Pam* 46
Martin, Scarlett* 19
Martin, Sian 80
Martin, Tim* 92
Martineau, Luke 67
Masters, Thelma* 103
Mawby, Ellie* 5
McMillan Davey, Caroline* 70
McWalter, Tom 93
Meek, Ben 60
Meek, Fiona* 60
Michalopoulos, Niko 67
Millar, Tim* 116

Milligan, Max 7
 Miln, Joanna* 13
 Milstein, Diana* 21
 Milton, David 65
 Minoprio, Jo* 67
 Morley, Angela* 3, 41, 55
 Morris, Anna* 78
 Morris, Simon* 28
 Morrison, Bridget 43
 Mowat, Jane* 68
 Munro, Debbie* 84
 Musgrave, Louise* 84

N

Needle, Lydia* 113
 Newbury, Jennifer* 21
 Newton, Jill* 63
 Norton, Kate* 95
 Nunny, Robert 91

O

O'Brien, Kevin* 89
 O'Farrell, Liam* 16
 O'Sullivan, Anne Marie 93, 104
 Oke, Andrea* 42

P

Palmer, Jessica 104
 Parker, Robert* 86
 Parker, Suzy* 19
 Parker, Zena* 86
 Pearce, Rowena* 116
 Pennycott, Martin* 38
 Peppin, Bidy* 107
 Phillips, Jane* 94
 Pickthall, Mark* 119
 Pittaway NEAC RWS RE, Neil 11
 Pizzey, Jason 37
 Pizzey, Myrtle* 37
 Pomeroy, Richard* 111
 Potter, Alison 110

Q

Qadir, Farouk 45

R

Raeburn, Elizabeth* 20
 Rigler, Annette* 45
 Roberts, Lesley* 80
 Robinson, Heather* 103
 Rooke, Angie* 19
 Ruffle, John 51

S

Sadgrove, Kit* 6
 Salt, Jeffy* 13
 Savage, Jennie 83
 Scott, Cameron* 4
 Scott, Gus 108
 Scott, Lotte* 108
 Shakspeare, Will* 100
 Sharpe, Erica* 44
 Sheldon, Peter* 9
 Simpson, Jake 58
 Sleigh, Tom* 41
 Smith, Emma* 57
 Sparkes, Liz* 89
 Spragg, Katie 93

Stack, Mary* 94
 Starr, Jim 44
 Stevens, Jean* 105
 Stubbs, Tamara* 9

T

Takahashi, Hiro* 8
 Tapper, Elizabeth* 16
 Tarr, Michael* 74
 Tatebayashi, Kaori 93
 Tetley, Caroline* 20
 Thomas, Peter* 85
 Towler, Georgina* 61
 Trevithick, Sarah* 95
 Truscott, Sarah 19
 Tuck, Lorraine 100
 Turner, Dante Ruben* 16

U

Uhlein, Camilla* 9
 Uren, Angela* 45

V

Vasilev, Iurii 111
 Vaughan, Will* 107
 Vezzini & Chen 93
 von Teazel, Scarlet* 63

W

Walsh Waring, Caroline 15
 Ward, David 14
 Warr, Heidi 100
 Warren, Jane 103
 Weaver, Nick* 4
 Webb, Holly 100
 Wessel, Jinny* 13
 West, Trevor 8
 Westwood, Kate* 95
 Wetherall, Sally* 2
 Whitchurch, John* 112
 White, Edith 103
 Williams, Sue* 109
 Willis, Lucy* 54
 Willoughby, Judy* 54
 Willow, Hannah 19
 Wilson, Pip* 41
 Witt, Julian 65
 Wood, Angie 64
 Wood, Tom* 70
 Woodward, Suzanne* 9

Y

Yates, Amy* 9

ORGANISATIONS, GALLERIES, GROUPS AND SCHOOLS

A Landscape of Objects: Forde
 Abbey 93
 Hestercombe Gardens 83
 Lytes Cary 104
 Kilver Court 14
 A Load of Old Scrap 49
 Andelli Art 34
 Art at Hide on the Hill 41
 Artists Centre at the Reading Room
 95

Bailey Hill Bookshop 108
 Bees - The Interconnectedness Of
 All Things 113
 Black Swan Arts 3, 4, 5
 blackandwhiteandread 56
 Bridgwater Arts Centre 52
 Bruton Art Factory 117
 Bruton School for Girls 113
 Cavaliero Finn at Monks Yard 88
 Chandos Society of Artists 52
 Clarks Village Museum 22
 Clayhill Arts 55
 Contains Art 61, 62
 Dove Studios 21
 Dutch Engels 106
 Eastville Project Space 99
 Frameus, The Workshops 28
 Fresh in Langport 100
 Gather-ing 25
 Grace Arts 24
 Heritage Courtyard Studios and
 Gallery 31
 Hopedene Studio 43
 Host 81
 Huish Episcopi Academy 79
 Hurston Studios 68
 Ignite Somerset 53
 Jackdaw Studio 91
 Kings School Bruton 118
 Lanacre Barn Gallery 67
 Leo Davey Studio Gallery 66
 Made in Glastonbury 27
 Mendip Art Club 10
 Millhouse Gallery 89
 Moreton Artists at Roundhill 11
 Muse- Makers in Museums:
 Axbridge and District Museum 42
 Bruton Museum 120
 Chard Museum 90
 Wells and Mendip Museum 32
 New Wave 62
 North Wootton Village Hall 19
 Objectscapes by Heptad 103
 Orchard Vale Trust 36
 Pylle Painters Plus 13
 Red Brick Building 23
 Rockaway Park 1
 Shave Farm 116
 Somerset Crafts 40
 Somerset Guild of Craftsmen 29
 Somerset Rural Life Museum 25
 St Cuthberts Mill 35
 Telling Tales 82
 The Brewhouse Theatre 82
 The Cuts 79, 101
 The Gallery, Castle Cary 111
 The Market House Castle Cary -
 Anticipation 110
 The Old Brick Workshop 71
 Wagon House Gallery 45
 Water - Meadow - Wood 97
 Wellington School 72
 Wells Cathedral School 33
 Wild Edge Gallery 44
 Woolavington Art Group 48
 YMCA Bridgwater 54

CREATIVE PATHWAYS

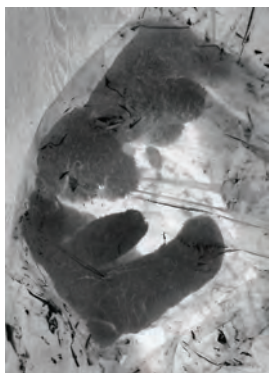
Creative Pathways is Somerset Art Works' professional development programme that aims to provide tailor-made support for artist members in Somerset to develop their practice and to deliver high-quality work.

somersetartworks.org.uk/saw-members/professional-development

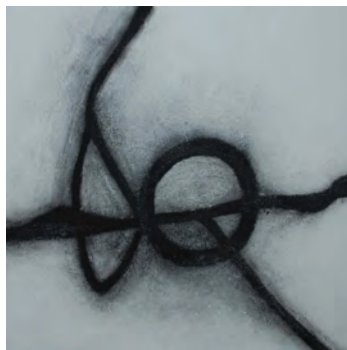
Isobel Adderley, Jody Crosher, Sue Gilmore and Ellie Mawby received bursaries this year to explore the prospect of progressing their artistic practice and widening their audiences, through creating new work in their chosen medium and showcase during the festival in the venue of their choice.



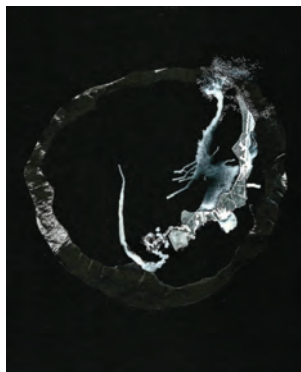
Isobel Adderley has recently gained BA (Hons) Fine Art at Goldsmiths, University of London. She is fascinated by our preconception of the body and physical space as separate and opposing forces. Isobel attempts to blur or trouble these preconceptions in her work and uses film, sculpture, live performance and music production to directly impinge on her audience in different physical ways. She will be creating one-off performance installation at Eastville Project Space in Yeovil (Venue 99) during Art Weeks Festival. www.isobeladderley.com



Judy Crosher gained BA(Hons) Fine Arts at Somerset College in 2014. She works with porcelain, interested in the tension between its fragility and strength, and in documentary film-making. The bursary provides her with the opportunity to experiment with the possibilities of combining seemingly unrelated materials to explore deeper themes, in particular the way in which ordinary objects and simple gestures can carry powerful emotions. She will present the new film installation at The Old Brick Workshop in Wellington. (Venue 71).



Sue Gilmore has recently graduated with a BA (Hons) in Painting. Her practice has evolved in a way that focuses on the work she has done with Willow Trees. She is interested in the material aspects of willow, making her own charcoal, whilst maintaining links to the living willow sculptures that she has nurtured. She will create an artist book as part of the collection in the Tree House Library of 'Amazing Space II: Spirit of Place' at Dove Studio at Butleigh (Venue 21), reflecting the creative and environmentally sensitive nature of the studios and adjoining space. sue-gilmore.com



Ellie Mawby graduated with a BA (Hons) Contemporary Arts Practice from Bath Spa University in 2015. She works with ink, pigments and paper. Her work draws attention to the public's unawareness of the serious issue of pollution and its affects on both a local and global scale. Like a riddle, her work is about the uncomfortable balance of air pollution - what cannot be seen by eye in the present moment, but will be starkly visible in the future. She will create an exhibition to showcase her new work at the Cafe gallery space at Black Swan Arts in Frome (Venue 5). elliemawby.wordpress.com



FRIENDS OF SAW

FRIENDS OF SAW

The visual arts of Somerset inject an array of colour and expression into our beautiful pastoral county. How dull our lives would be without the insight into these talented artists' mind-sets and creativity.

By joining FRIENDS OF SAW, your money provides opportunities, bursaries, and placements for graduates and emerging artists; encouraging them to develop their talent. Your sponsorship also funds prizes, exhibitions and training commissions, which are vital for continuing the good work of Somerset Art Works.

You are invited to attend private views and events - an exclusive privilege whilst being a Friend. You are also immediately entered into the Friends of SAW quarterly prize draw, where you could win an original piece of stunning artwork donated by one of our artist members. You will receive hot off the press, a copy of the guide via post, to your home address.

It is our duty to preserve and protect the arts in the face of ever-decreasing financial funding. Creativity cannot be silenced and by becoming a Friend of SAW, you help to keep artist expression alive and loud. Your generous support is greatly appreciated by all members and the team at Somerset Art Works, as well as the visual arts community.

Thank you!

Friends of SAW

Giles Adams
Angela Andrews
Linda Bennett
Geoffrey and Rossanne Bertram
Carlo and Alan Blandford
Mr and Mrs Christopher Bond
Dorothea Bradley
Gill Braniff
Rosalie Challis
Chris Chappell
Diana M Gordon Clark
Charles Evans
Colin and Eileen Forbes
Mrs Deirdre Gascoigne
Mrs Marian Greswell
Geoffrey Hill and Rosemary Bradley Hill
Penny Horne
Mr and Mrs B J Hurst-Bannister
Sue Isherwood
Sir Michael Layard
Norman and Anne Lees
Shirley Lomas
David and Marion Mainhood
Janet Middleton
Mr and Mrs M Mowat
Heather A Stallard
Mrs D Stephenson
Corinna Turner
Angela Warden
Chris Watts
Jennifer Wiggins
Hon Daphne Wilbraham
Robin and Romey Williams



ACKNOWLEDGEMENTS

Patron

Kevin McCloud

Board of Directors

Richard Pomeroy (Chair)

Melita Armitage

Louise Betts

Liz Clay

Tim Martin

Jan Ollis

Pauline Watson

Honorary Treasurer

Amanda Eastwood

Local Authority Representative

Pauline Burr (South Somerset District Council)

SAW Team

Carol Carey - Creative Director

Stephanie Sutcliffe - Operations Manager

Zoe Li - Associate Producer

Beccy Swaine - Learning and Engagement Manager

Paul Newman - Festival Co-ordinator

Area Representatives

Fiona Campbell - Mendip East

Chris Lee - Mendip West

Jackie Curtis - Sedgemoor

Andy Davey - West Somerset

Natalie Parsley - Taunton Deane

Sebastian Chance - South Somerset

Paul Newman - South Somerset (East)

Blogger in Residence

Davina Jelley @talesartplay

Somerset Art Works Project Poet in Residence

Chris Jelley

Guide Design

Simon Barber

simon@evolver.org.uk

Guide Distribution

With thanks to John Doyle

Guide Repro

Flaydmouse Printing and Design
www.flaydmouse.com

Guide Printing

Stephens and George
www.stephensandgeorge.co.uk

PR Support

Gillian Taylor
gilliantaylorpr@icloud.com

Website Development

Thirty8 Digital www.thirty8.co.uk

Proofing

Emma Tabor and Paul Newman

Somerset Art Works would like to thank SAW Members, artists, individuals and partner organisations for their hard work and support in making this year's Festival possible.

Special thanks to the following project partners:

Cinema Obscura, Wiveliscombe Primary School

Flow Gallery

Forde Abbey

Hestercombe

Kilver Court

National Trust at Lytes Cary

Roxy Cinema, Axbridge

Somerset Film

South West Heritage Trust

Strode Theatre, Street

University Centre Somerset

Thank you to our advertisers this year:

10 Parishes Festival

ACEArts

ArtsLink

Black Swan Arts

Bocabar

Bridport and West Dorset Open Studios

Bridport Open Studios

Bruton School for Girls

Burcott Mill

Cavaliero Finn

Deborah Westmancoat

Devon Artist Network

Evolver

Flow Gallery

Forde Abbey

Hestercombe Gallery

Hot Clay

Jerram Gallery

Kilver Court

Kit Glaisyer

North Devon Art Trek

Nynehead Court

Sherborne Times
Somerset Rural Life Museum
Twineworks
Warm Glass UK
Wells Festival of Literature
Yeovil Super Saturday

Visitor Prize Draw is sponsored by:

Bruton School for Girls
Friends of SAW
The Gallery, Castle Cary

Somerset Art Works is funded by:

Arts Council England Lottery Fund
South Somerset District Council
Somerset County Council
Taunton Deane Borough Council

Sponsored by:

Bruton School for Girls
www.brutonschool.co.uk
Somerset College
www.somerset.ac.uk
Cavaliero Finn
www.cavalierofinn.com
Salt of the Earth
www.salt-of-the-earth.biz
Stags Estate Agents
www.stags.co.uk
Stay in Somerset
www.stayinsomerset.co.uk
Harcourt Kerr
www.harcourt-kerr.com
Sykes Cottages
www.sykescottage.co.uk
Mill on the Brue
www.millonthebrue.co.uk
What's on Somerset
www.whatsonsomerset.com

Funders



Sponsors



Project Partners



SUPPORT SAW

Somerset Art Works (SAW) supports the development of the visual arts and artists in Somerset. There are many ways to support our work: join the Friends of SAW, become a Sponsor, or simply make a donation via our website and click:

SUPPORT US - DONATE NOW

(As a UK tax payer your donation will be increased by a further 25% without any additional cost to you)

www.somersetartworks.org.uk/support-us/donate/

OPEN STUDIOS 2018

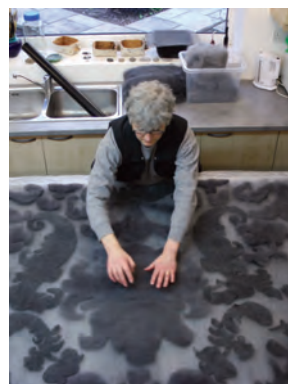
Somerset Art Weeks now alternates between *Festival* and *Open Studios* years.

Open Studios 2018 will draw Art Weeks back to its roots, focusing on artists in their working environment. It demonstrates how they make their work, their inspiration and the creative process. It aims to support artists who want to work professionally and are looking to promote their creative businesses.

The event profiles Somerset Art Works artist members, giving visitors the unique opportunity to look inside artists' studios and temporary working spaces.

The next Open Studios event will take place in September 2018. Somerset Art Works Membership registrations renew every November and Open Studios Venue registrations will open in January 2018, closing at the end of March.

For more information please visit www.somersetartworks.org.uk



Liz Clay

VISITORS' FEEDBACK

Thank you for visiting Somerset Art Weeks Festival 2017. We hope you have enjoyed this year's Festival. Please take a moment to complete this form, which will greatly assist us with the planning of future events.

Send us your completed form by 30 October 2017 to be in with a chance of winning a stay at The Gallery in Castle Cary, with 4 runner up prizes all donated by SAW members.

1. How did you hear about Somerset Art Weeks Festival 2017?

- ☐ Venue ☐ Website
☐ Brochure ☐ Poster
☐ Road signage ☐ Facebook
☐ Twitter ☐ Instagram
☐ Press feature ☐ TIC
☐ Word of mouth

Other, please specify:

2. How many venues have you or do you intend to visit this year?

3. Who did you visit the event with?

- ☐ Alone ☐ With friends
☐ With a partner ☐ With children
☐ As part of a group
☐ With work colleagues

4. Which county do you live in? Where have you visited from?

- ☐ Somerset ☐ Devon
☐ Dorset ☐ Bristol
☐ Gloucestershire ☐ Wiltshire
☐ London ☐ Hampshire

Other (Please specify)

5. Where did you stay for Somerset Art Weeks Festival 2017?

- ☐ At home ☐ Local hotel
☐ With friends or family
☐ Self-catering accommodation
☐ Local B&B ☐ Other

6. What means of transportation did you use to make your visit?

- ☐ Walking ☐ Cycling
☐ Train ☐ Bus
☐ Car

7. How many pieces of artwork did you buy?

8. Please give an estimate of how much you have spent on artworks during the event

- ☐ £5 or less ☐ £5 - £49
☐ £50 - 99 ☐ £100 - £500
☐ £500 +

9. What other facilities did you use during your visit?

- ☐ Hotel or B+B ☐ Restaurants
☐ Cafes ☐ Pubs
☐ Shops ☐ Tourist attractions

10. Approximately how much did you spend during your visit including food, drink, transportation, accommodation, purchases (including artwork purchased at venues)?

£

11. What is your interest in the visual arts?

- ☐ Artist / maker / designer
☐ Student ☐ Academic
☐ Personal interest
☐ Professional interest (e.g. curator)
☐ None of these

12. Have you visited Somerset Art Weeks before?

- ☐ Yes ☐ No

13. Would you visit Somerset Art Weeks again?

- ☐ Yes ☐ No

14. Which of the following words apply to Art Weeks 2017?

- ☐ High quality ☐ Stylish
☐ Well presented ☐ Handmade
☐ Celebratory ☐ Collectable
☐ Inspiring ☐ Informative
☐ Ordinary ☐ Disorganised
☐ Mediocre ☐ Uninspiring

15. Which of these statements best describes why you came today?

- ☐ I thought that I would enjoy it
☐ I was curious about Art Weeks and wanted to find out more
☐ I thought my family and friends would enjoy it
☐ I felt it would add value to professional or personal interest
☐ I was keen to buy art work

16. Please tell us how we could improve the event

17. What was your favourite venue?

Venue Number

Let us know why

The venue receiving most votes will receive a prize, presented by the Friends of SAW

18. Please let us know the following about you

- ☐ Male ☐ Female
Age ☐ 17 - 19 ☐ 20 - 29
☐ 30 - 49 ☐ 50 - 64
☐ 65+
Ethnicity ☐ White
☐ Mixed / Multiple Ethnic background
☐ Asian or Asian British
Black or Black British
☐ Other inc prefer not to say

Your Details

Name
Email
Mobile

Your details will be treated as strictly confidential and will not be forwarded to any other organisation. Data is used by SAW to help improve future events.

- ☐ Tick here if you DO NOT want to join our Mailing List

Please return your form by 30 October 2017 to:
Somerset Art Works, The Town Hall, Bow Street, Langport, Somerset, TA10 9PR

Muse: Makers in Museums

Muse: Makers in Museums is a project that is supporting eight artists to make new work in response to the unique collections to be found in the small community museums of Devon and Somerset. Since May 2017 the artists have been working with local groups to explore the collections, and have been developing inspirational work in a range of craft media.



image: Andrea Oke

Devon

Axminster Heritage Centre
Emma Molony

Kingsbridge Cookworthy Museum
Taja

Museum of Dartmoor Life, Okehampton
Jess Davies

Teign Heritage Centre
Jacky Oliver

Somerset

Chard and District Museum
Caitlin Heffernan

Bruton Museum
Dorcas Casey

Wells and Mendip Museum
Sean Harris

Axbridge and District Museum
in King John's Hunting Lodge
Andrea Oke

Project work will be on show at each museum during:

Devon Open Studios 9 – 24 September

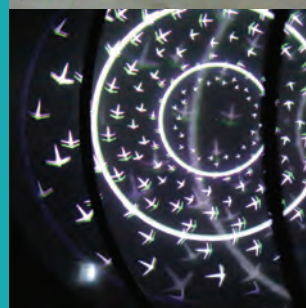
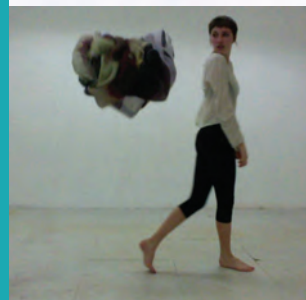
Somerset Art Weeks 23 September – 8 October

Please see individual Guide entry for dates and times

The work of all eight artists will also be shown together in a special exhibition at the Museum of Somerset, Taunton from November 2017 to January 2018

See the project blog at musemakers.wordpress.com for more information.





 @SAW_Ltd #artweeks17

 somerset_art_works

 somersetartworks

www.somersetartworks.org.uk